

MICRO

Carpet Tile 50cm x 50cm



NANO

MICRO

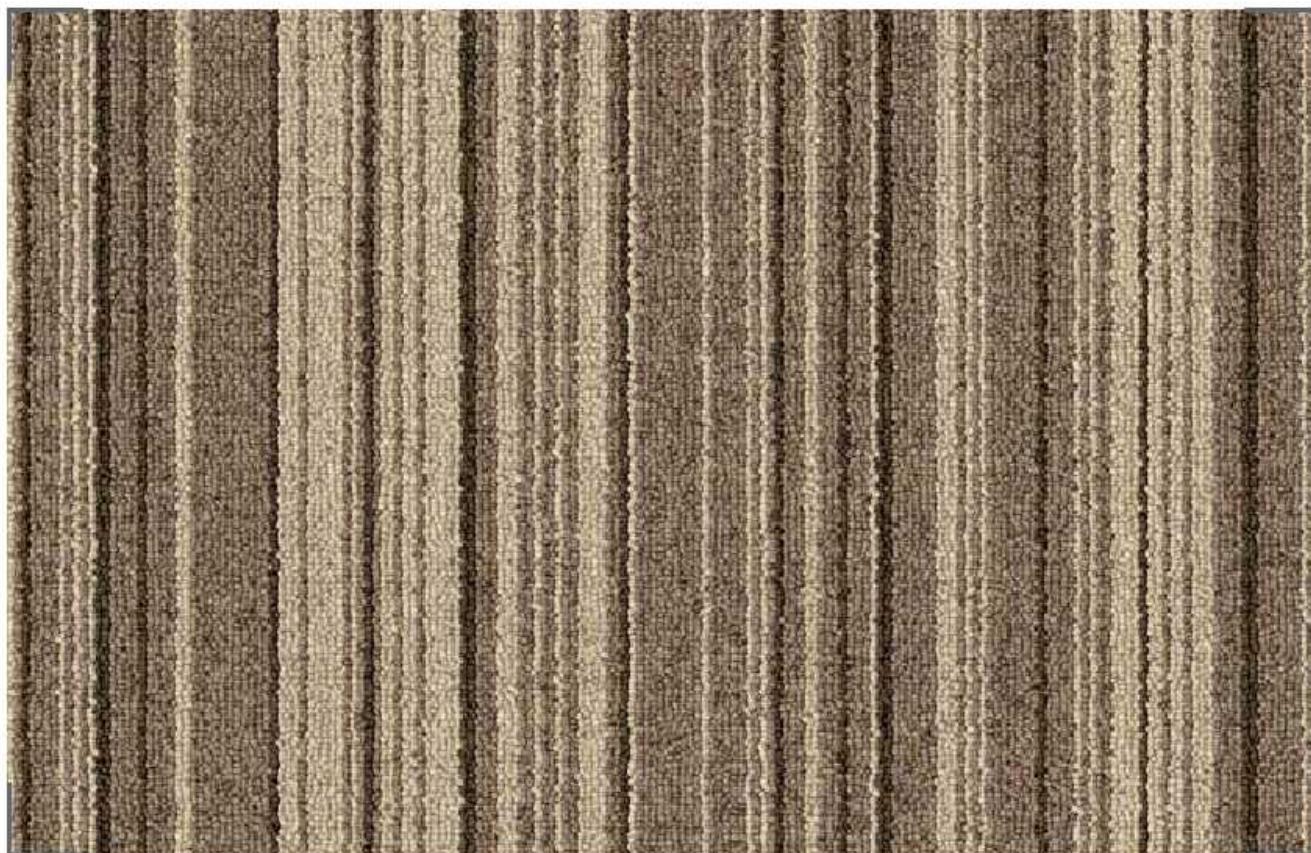
MINI

MACRO

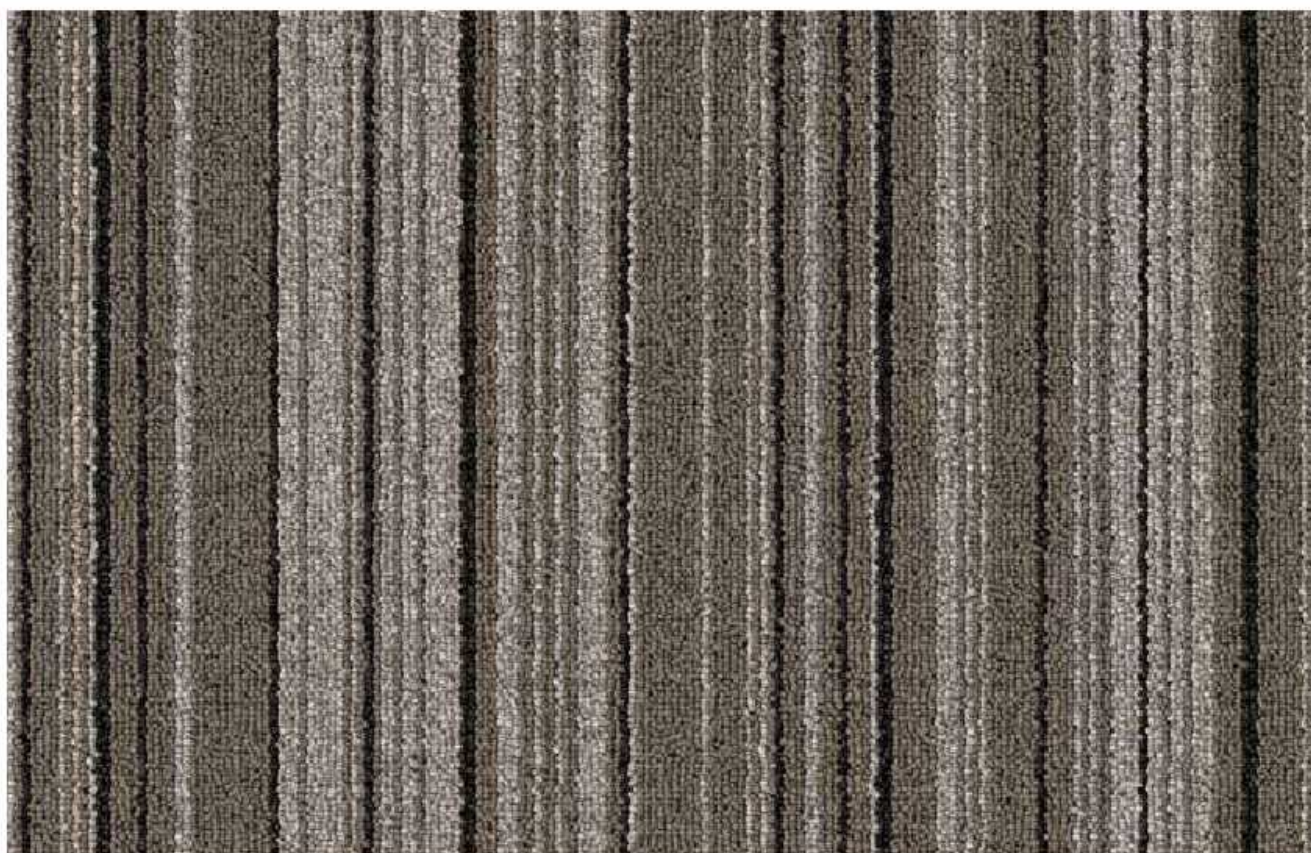
MEGA

Linear Influence Collection





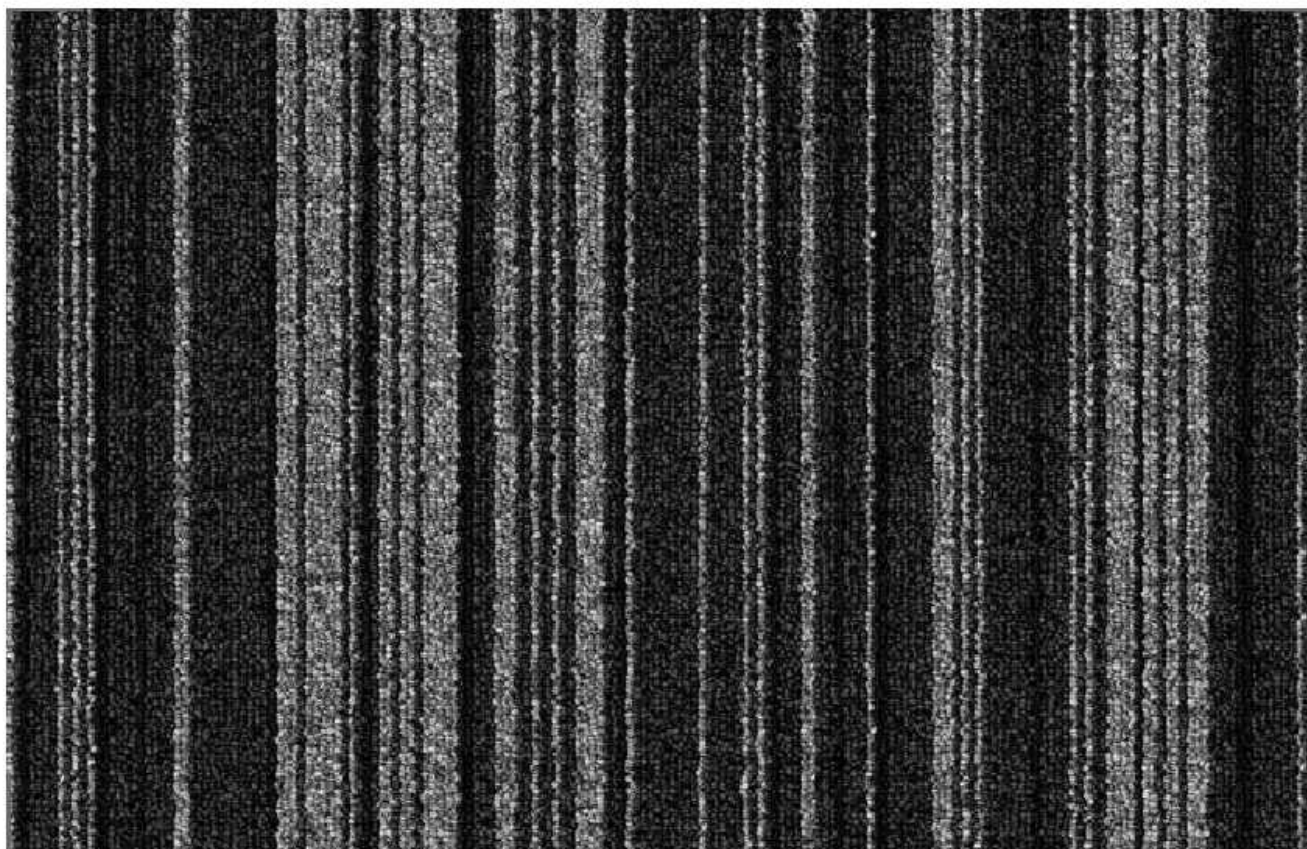
Micro 645 Sand



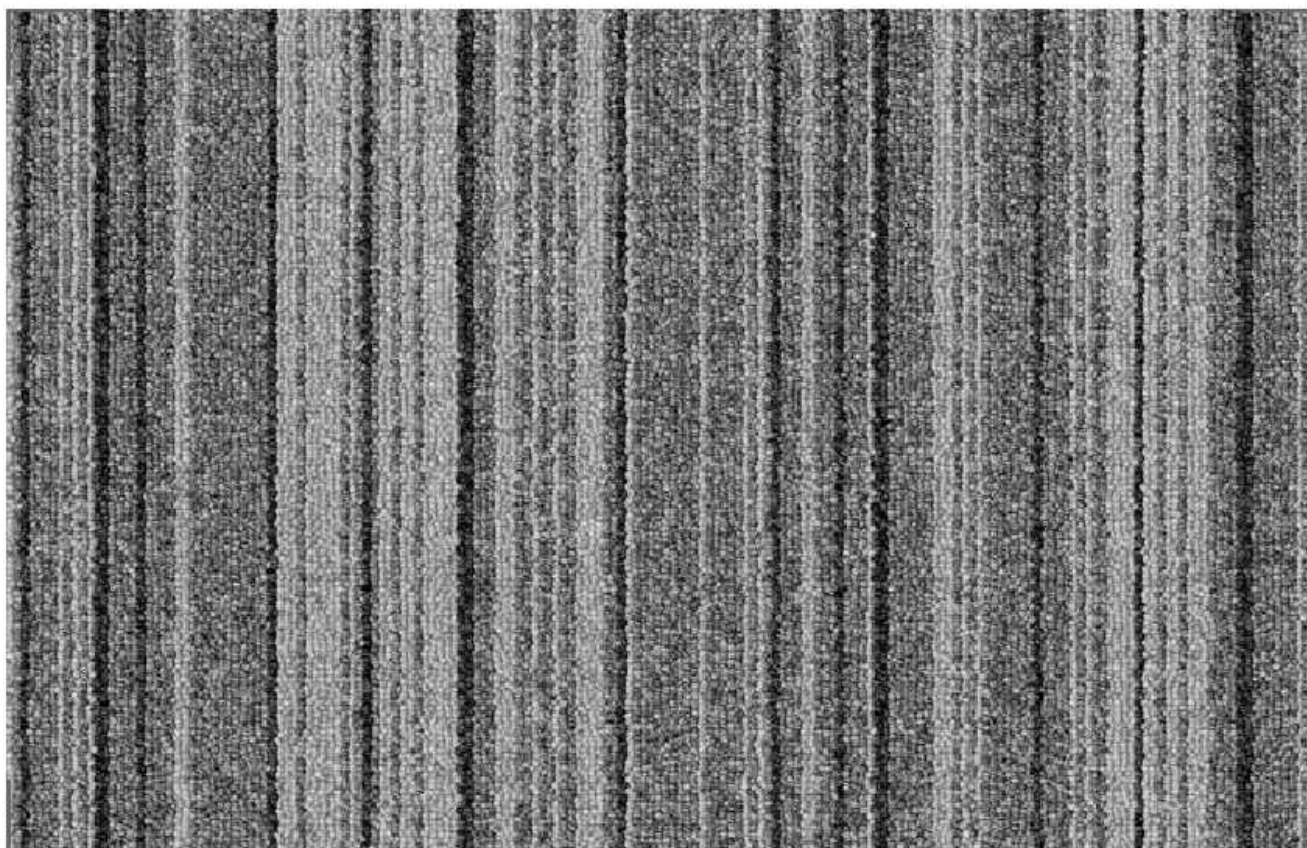
Micro 697 Wood







Micro 676 Pebble



Micro 675 Grey



Quarter Turn



Micro 651 Blue



Micro 623 Blush

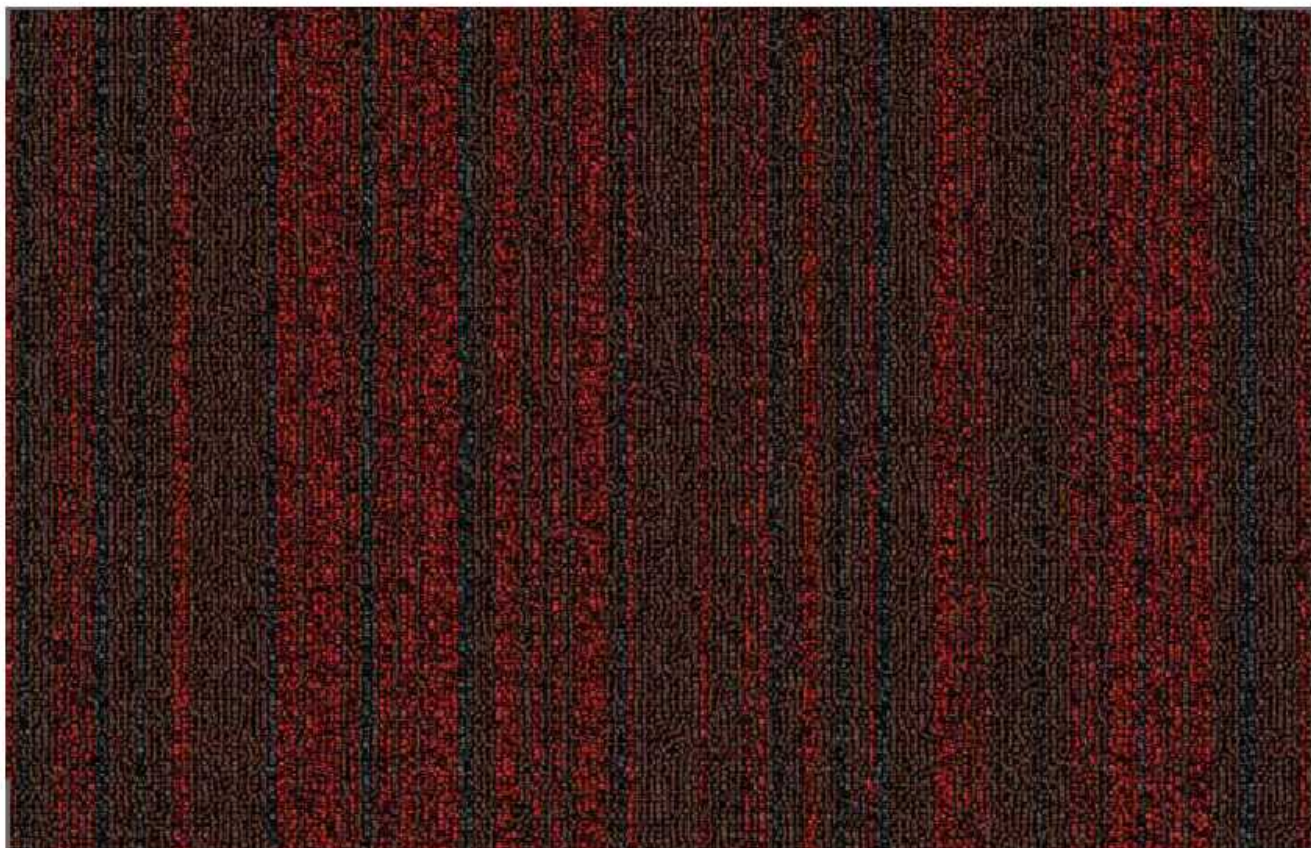


Quarter Turn

651 Blue



Micro 666 Olive



Micro 627 Garnet



Quarter Turn

666 Olive



Quarter Turn

676 Pebble



Quarter Turn

623 Blush



Quarter Turn

627 Garnet



Linear Influence Collection

Nano Series



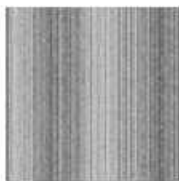
Nano 646 Sand



Nano 694 Beige



Nano 677 Pebble



Nano 672 Grey



Nano 656 Blue



Nano 695 Sky



Nano 664 Pine



Nano 685 Lilac

Micro Series



Micro 645 Sand



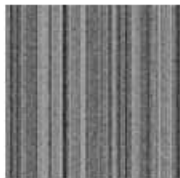
Micro 697 Wood



Micro 623 Blush



Micro 676 Pebble



Micro 675 Grey



Micro 651 Blue



Micro 666 Olive



Micro 627 Garnet

Mini Series



Mini 695 Sand



Mini 693 Wood



Mini 678 Pebble



Mini 675 Charcoal



Mini 655 Blue

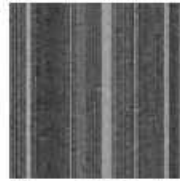


Mini 627 Red

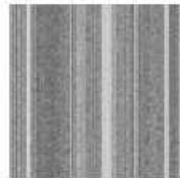
Macro Series



Macro 476 Sand



Macro 576 Pebble



Macro 276 Grey



Macro 796 Coffee



Macro 056 Sky

Mega Series



Mega 546 Sand



Mega 776 Grey



Mega 426 Pebble



Mega 256 Blue

MICRO



Carpet Tile 50cm x 50cm

PRODUCT INFORMATION

Construction	LOOP PILE
Style	MICRO
Fiber	Solution Dyed Olefin
Pile Weight	550 gm/m ²
Total Weight	4.5 kg/m ²
Gauge	1/10th
Primary Backing	Non-Woven
Secondary Backing	100% Vinyl StableShield
Tile Size	50cm x 50cm
Pile Height	3.0 mm
Total Pile Height	6.0 mm
Recommended Installation	Quarter Turn, Brick or Ashlar
Tile / Carton	20 Pcs (5m ²)

TECHNICAL PERFORMANCES

Flammability	:	ASTM D-2859/FFI-70/16CFR 1630 Pass 8/8
Smoke Density	:	ASTM E662 Less than 450
Static Propensity	:	AATCC - 134 under 3.5 KV
Colour Fastness	:	5:5 on Gray Scale
Soiling Propensity	:	AATCC123 Grey Scale 5
Dimensional Stability	:	DXN 54318 6.20



Tile



Quarter Turn



Brick



Ashlar

Terms and Conditions: Specifications are subject to manufacturing tolerances and maybe changed without prior notice. Dye lots may vary in colour from sample and between production lots. All product purchases are subject to Messara Trading Standard Terms and Conditions of Sale. Please refer to our Installation Guideline, Maintenance Manual and Warranty Document for further clarification.

Disclaimer: This Brochure is presented for informational purposes only. Every effort is made to ensure that carpet images are of an accurate representation of the product. However, they are for illustrative purposes only and colour variations may occur in actual product, and between dye series. Please note that lineal patterns when installed directional, may produce an undesired effect when lines of the same colour meet at edges. Installers need to monitor this during installations and reposition tiles where appropriate. Patterns that are random in nature may contain additional colour ways to the ones displayed on the samples. Please consult your commercial sales consultant for further informations.