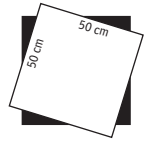


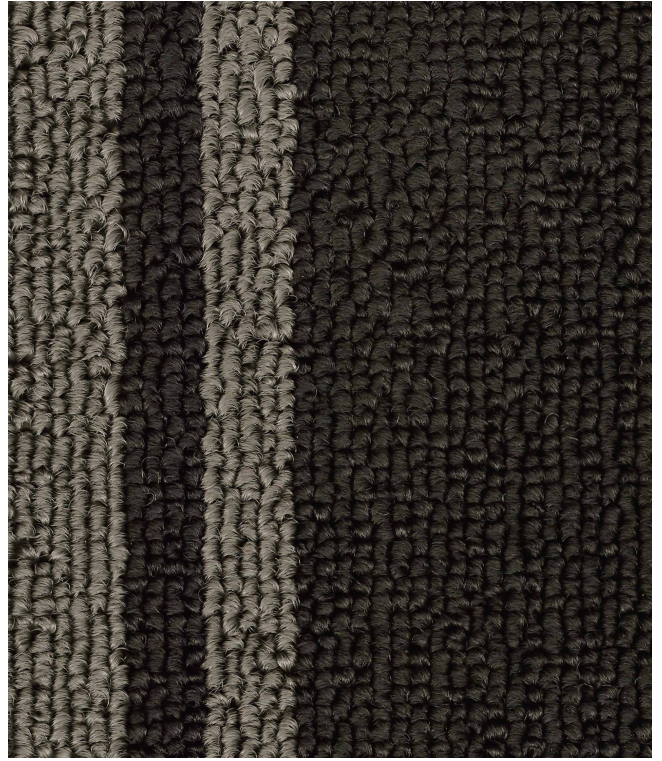


50 X 50 CARPET TILES **XPRESS**





Xpress Black A



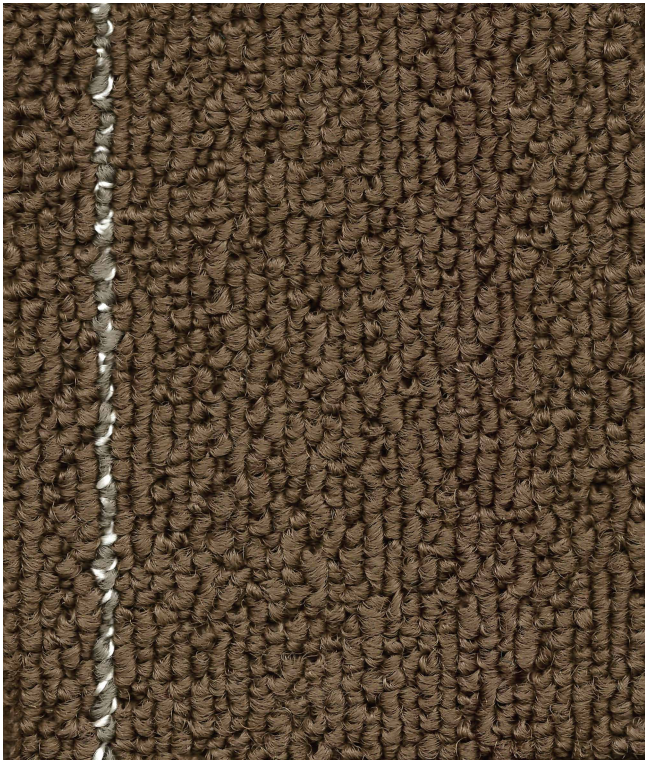
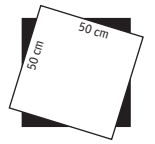
Xpress Grey B



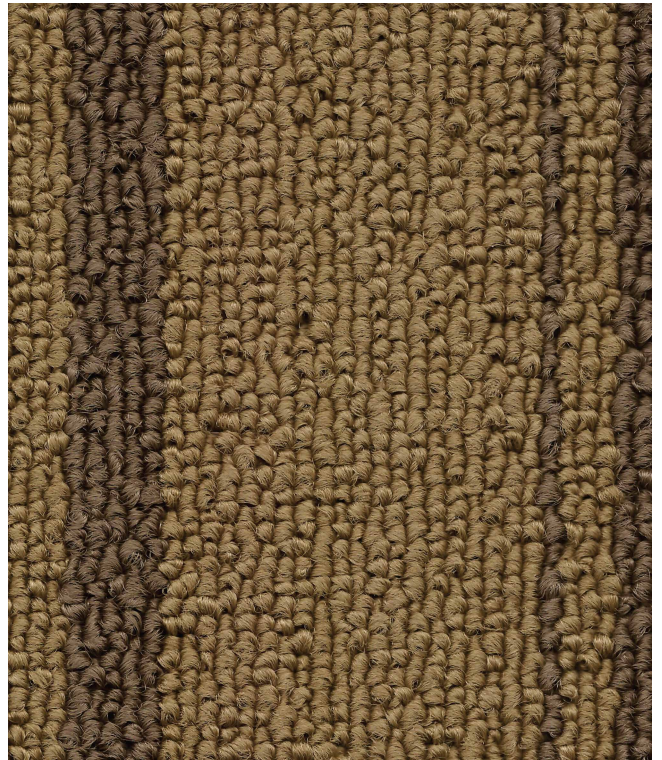
Xpress Blue C



Xpress Chocolate D



Xpress Brown E



Xpress Beige F



Xpress Red G

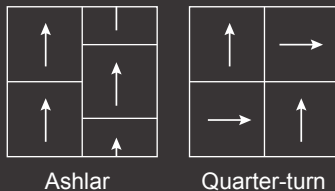


Xpress Green H

XPRESS

Style	XPRESS
Construction	Level Loop
Yarn	100% PP
Gauge	1/10 inch
Pile Height	4 mm
Pile Weight	580 gr/m ²
Primary Backing	Non woven
Secondary Backing	PVC + Glass Fiber + PVC
Dimensions	50 x 50cm
Color System	100% Solution Dyed
Area of Use	Commercial
Static Control	Life of the Carpet
Packing	20 pcs / Carton (5m ²)

Approved installation method



General Contract.



Solution Dyed.
New Generation Polypropylene.



Flame Resistance.
Passes the British Hot Metal
Nut Test (BS 4790)



Synthetic fiber and backing gives
Inherent resistance to Micro
organism and insect attack.



Colourfast and Bleach Resistance



A Lifetime Anti-Static Guarantee



Stain Resistant



Roller Coaster.



Quality & Environmental
Management

ISO



CNAB
CNAB020-O
ISO 9001:2000 CERTIFICATION

- Specifications are subject to normal manufacturing tolerances.
- As in all quality carpets, colors are subject to dye lot variation
- Replaceable walk off mats are recommended at entrances to minimise soiling.

Terms and Conditions: Specifications are subject to manufacturing tolerances and maybe changed without prior notice. Dye lots may vary in colour from sample and between production lots. All product purchases are subject to Messara Trading Standard Terms and Conditions of Sale. Please refer to our Installation Guideline, Maintenance Manual and Warranty Document for further clarification.

Disclaimer: This Brochure is presented for informational purposes only. Every effort is made to ensure that carpet images are of an accurate representation of the product. However, they are for illustrative purposes only and colour variations may occur in actual product, and between die series. Please note that lineal patterns when installed directional, may produce an undesired effect when lines of the same colour meet of two edges. Installers need to monitor this during installations and reposition tiles where appropriate. Patterns that are random in nature may contain additional colour ways to the ones displayed on the samples. Please consult your commercial sales consultant for further informations.

