

Ruby 70 Acoustic

HETEROGENEOUS ACOUSTIC VINYL

Design
harmony
and
performance



2M ROLL



 **Tarkett**

OAK Grey 25148 002, MAYA Grey 25148 006

Ruby 70 Acoustic

OAK



Natural Honey 25148 001

OAK



Dark Brown 25148 000

OAK



Grey 25148 002

ARCADIA



White Grey 25148 007

FARO 2



Anthracite 25148 003

Ruby 70 Acoustic



OAK Natural Honey 25148 001, UNO Apple 25086 044



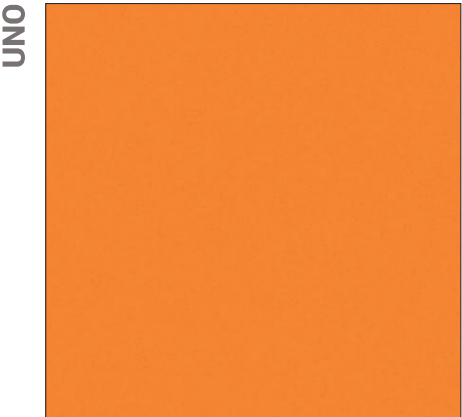
UNO

Light Blue 25086 041



UNO

Apple 25086 044



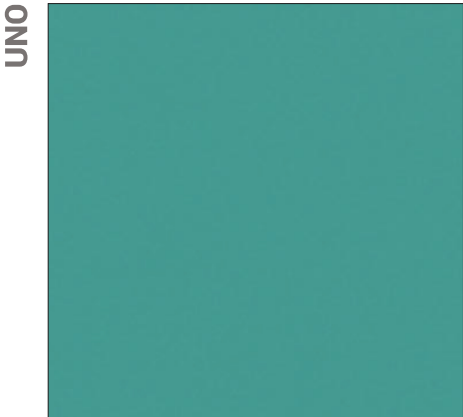
UNO

Orange 25086 042



UNO

Grey 25086 040



UNO

Turquoise 25086 043

Ruby 70 Acoustic

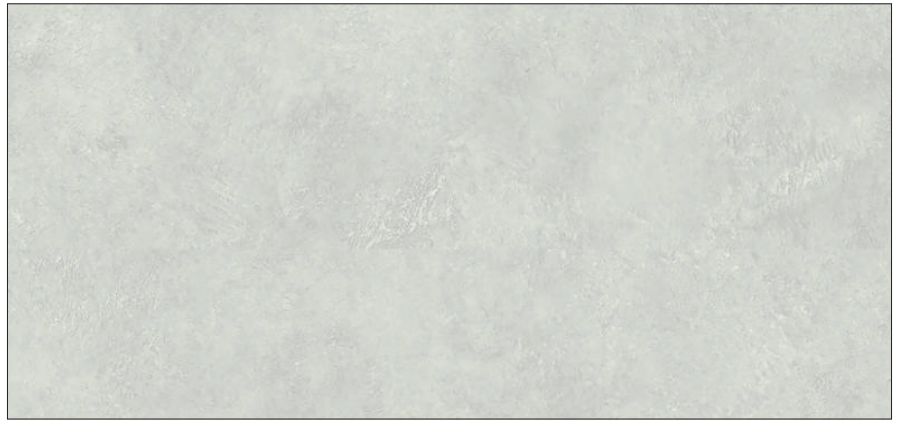


MAYA



Grey 25148 006

MAYA



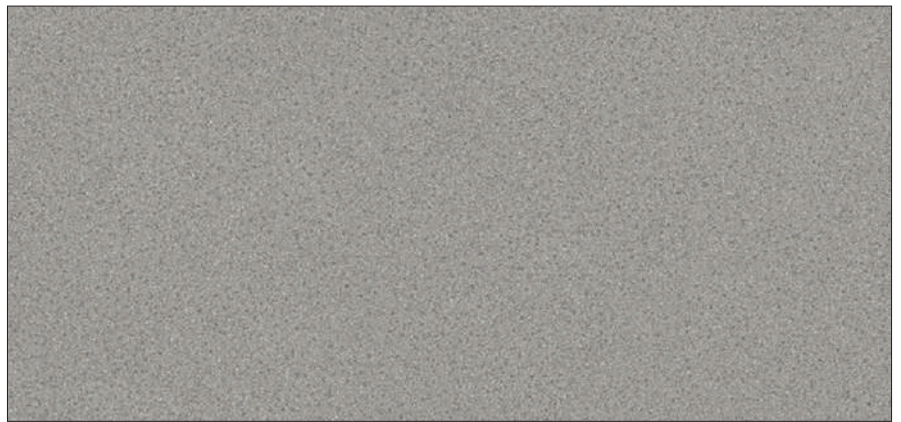
Light Grey 25148 008

NATURE



Black 25086 008

NATURE



Cold Grey 25086 005

NATURE

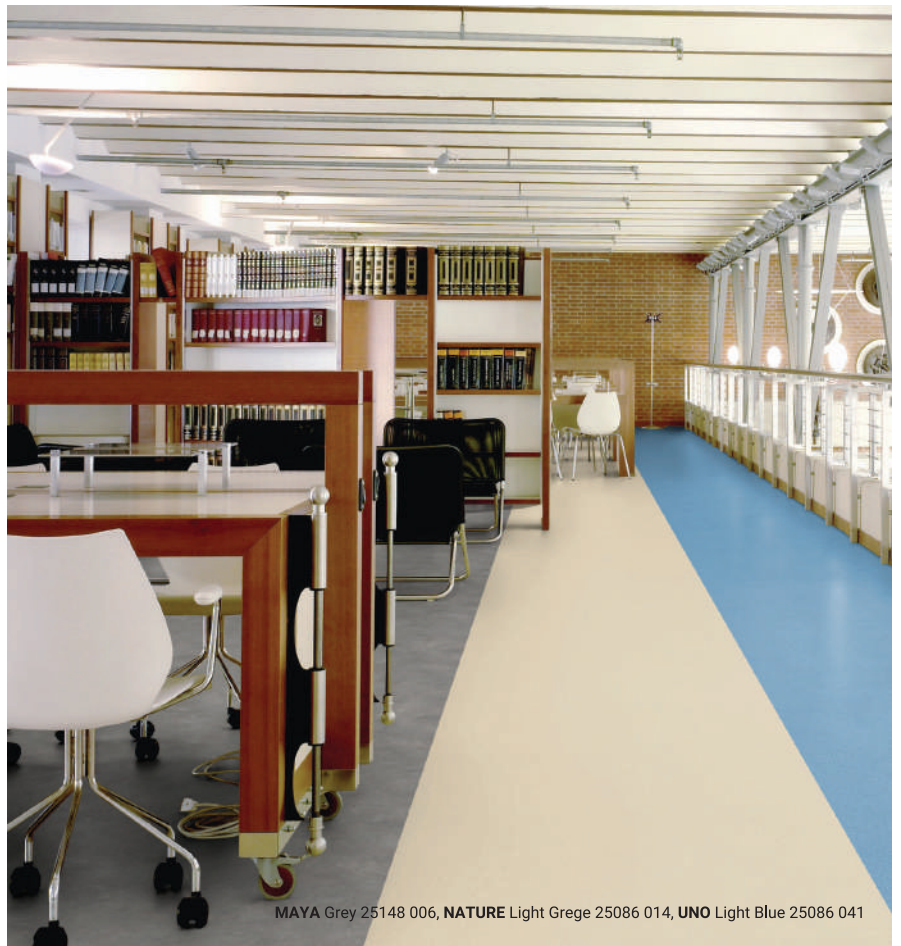


Fresh Blue 25086 000

NATURE



Light Grege 25086 014




MAYA Grey 25148 006, NATURE Light Grege 25086 014, UNO Light Blue 25086 041



ARCADIA White Grey 25148 007, FARO 2 Anthracite 25148 003

Ideal for heavy traffic commercial areas, especially in Education, Healthcare and Aged Care facilities, RUBY 70 is available in both compact and acoustic versions. The new embossing has been developed to reduce maintenance and save you time and money. RUBY 70 offers trendy colours and decors with a large range of LRVs allowing you to play with light and contrast in your installation, without having to compromise on technical performance.

phthalate free
 **100%**



16 decors



Acoustic (19 dB)



2m rolls



LRV* between

20 - 40%

For visual comfort

*Light Reflective Value



Traffic & slip resistance

0.70mm wearlayer

R10 slip resistance



Easy maintenance

TopClean™ PUR

No wax, no polish

Ruby 70 Acoustic

TECHNICAL DATA	STANDARD	RUBY 70 ACOUSTIC
CLASSIFICATION		
Classification	EN 651	Heterogeneous acoustic floor covering based on polyvinyl chloride
	EN ISO 10874	34
Wear group	EN 651	T
TECHNICAL CHARACTERISTICS		
Total thickness	EN ISO 24346	3,00 mm
Total weight	EN ISO 23997	2500 g/m ²
Wear layer thickness	EN ISO 24340	0,70 mm
Surface treatment		Top Clean™
Form of delivery	EN ISO 24341 Sheet	Approx. 23 lm x 200 cm Art. no. 25086/25148_ _ _ 3 digit colour number
PERFORMANCES FOR CE MARKING REQUIREMENTS (EN 14041)		
Declaration of Performance	EN 14041	0131-0056-DoP-2015-01
Reaction to fire	EN ISO 13501-1	ClI-s1 glued over concrete and wood substrates
Electrostatic properties	EN 1815	< 2kV on concrete
Thermal resistance	EN 12667	Approx. 0,04 m ² K/W
Slip resistance	EN 13893	μ ≥ 0.3
PERFORMANCES FOR CE MARKING REQUIREMENTS (EN 14041)		
Residual indentation	EN ISO 24343-1	Required value: ≤ 0.20 mm Best measured value*: 0.11 mm
Impact sound reduction	EN ISO 717/2 NF S31-074	19dB Class A
Slip resistance	DIN 51130	R10
Furniture leg	EN 424	No damage
Castor chair	ISO 4918	No damage
Curl resistant to heat	EN ISO 23999	≤ 8 mm
Light fastness	EN ISO 105-B02	≥ 6
Dimensional stability	EN ISO 23999	≤ 0,10%
Chemical resistance	EN ISO 26987	Not affected (0)
Underfloor heating		Suitable
ENVIRONMENTAL PERFORMANCES		
Total VOC emissions	ISO 16000-9	≤ 100 µg/m ³ (after 28 days)
COLOURS		
16		

The above information is subject to modification for the benefit of further improvement.
Tarkett's instructions regarding installation, cleaning and maintenance should be observed.



Coordinated Welding rods

COLOURS	COLOUR CODE	WELDING RODS MULTICOLOURS	COLOURS	COLOUR CODE	WELDING RODS MULTICOLOURS	COLOURS	COLOUR CODE	WELDING RODS MULTICOLOURS	COLOURS	COLOUR CODE	WELDING RODS MULTICOLOURS
OAK - Natural Honey	25148 001	1287 153	FARO-2 - Anthracite	25148 003	1287 333	NATURE - Fresh Blue	25086 000	1287 804	UNO - Turquoise	25086 043	1287 932
OAK - Dark Brown	25148 000	1294 429	NATURE - Light Grege	25086 014	1287 685	UNO - Grey	25086 040	1287 182	UNO - Orange	25086 042	1287 119
OAK - Grey	25148 002	1287 713	NATURE - Cold Grey	25086 005	1287 278	UNO - Light Blue	25086 041	1287 421	MAYA - Light Grey	25148 008	1287 526
ARCADIA - White Grey	25148 007	1287 402	NATURE - Black	25086 008	1287 526	UNO - Apple	25086 044	1287 132	MAYA - Grey	25148 006	1287 006



MADE IN LUXEMBOURG

