



7201 PURPLE



7202 RED



7401 BROWN



7402 BEIGE



7403 GOLD



7501 SKY



7502 DARK BLUE



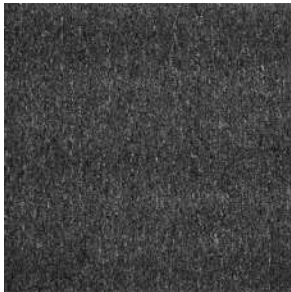
7503 OCEAN



7601 GREEN



7701 GREY



7702 BLACK



## SPECIFICATIONS

Product	:	SOLAR
Fiber	:	100% Olefin (Stan-Extra Durable)
Manufacturing Process	:	Tufted, Loop Pile
Yarn Type	:	BCF
Dye Method	:	Solution Dyed
Face (Pile) Carpet Gauge	:	1/10th
Pile Height	:	3.00 mm ( $\pm$ 0.2 mm)
Total Height	:	6.00 mm
Primary Backing	:	Non Woven (PES/PA)
Pile Weight	:	550 gms/m <sup>2</sup> ( $\pm$ 5%)
Total Weight	:	$\pm$ 4500 gms/m <sup>2</sup> ( $\pm$ 5%)
Secondary Backing	:	Glass Fiber Reinforced PVC Backing
Stitch Rate/Inch	:	15 ( $\pm$ 60/10 cms)
Recommended Installation	:	Quarter Turn
Size	:	50 x 50 cms

## DISCLAIMERS

According to International Carpet Manufacturing norms colors may differ from dye lot to dye lot within tolerance. Please take note of the dye lot number on the cartons before installing.

## PERFORMANCE SPECIFICATION

Flammability	:	ASTM D-2859//FF 1-70//16CFR 1630 Pass 8/8
Smoke Density	:	ASTM E662 Less than 450
Static Propensity	:	AATCC - 134 Under 3.5KV
Color Fastness	:	5/5 on Grey Scale
Hexapod Test (Water)	:	ASTM D-5252 (+75%)



Quarter Turn