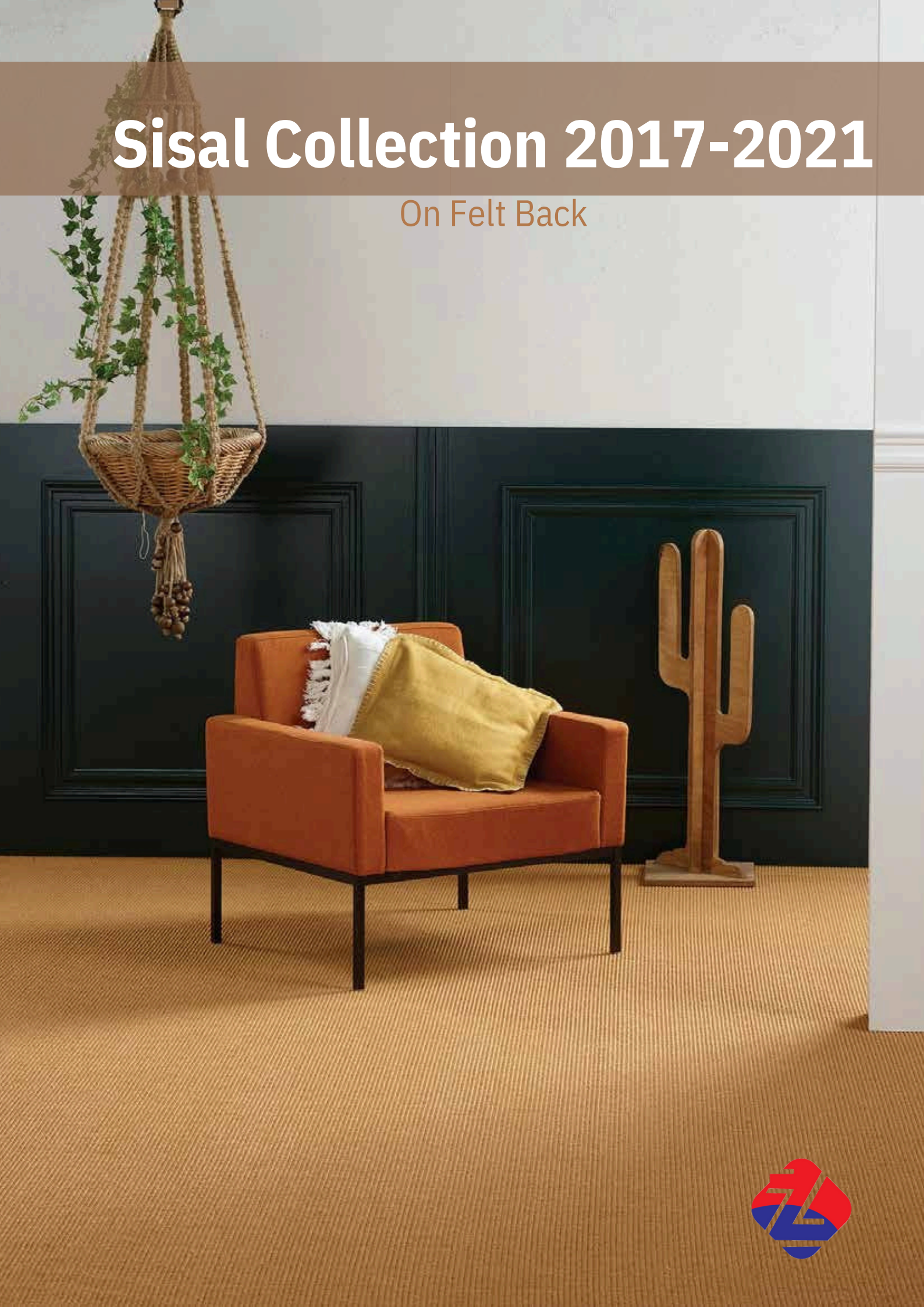


Sisal Collection 2017-2021

On Felt Back





Mini Boucle 8036

Mini Boucle Collections



Mini Boucle 8036



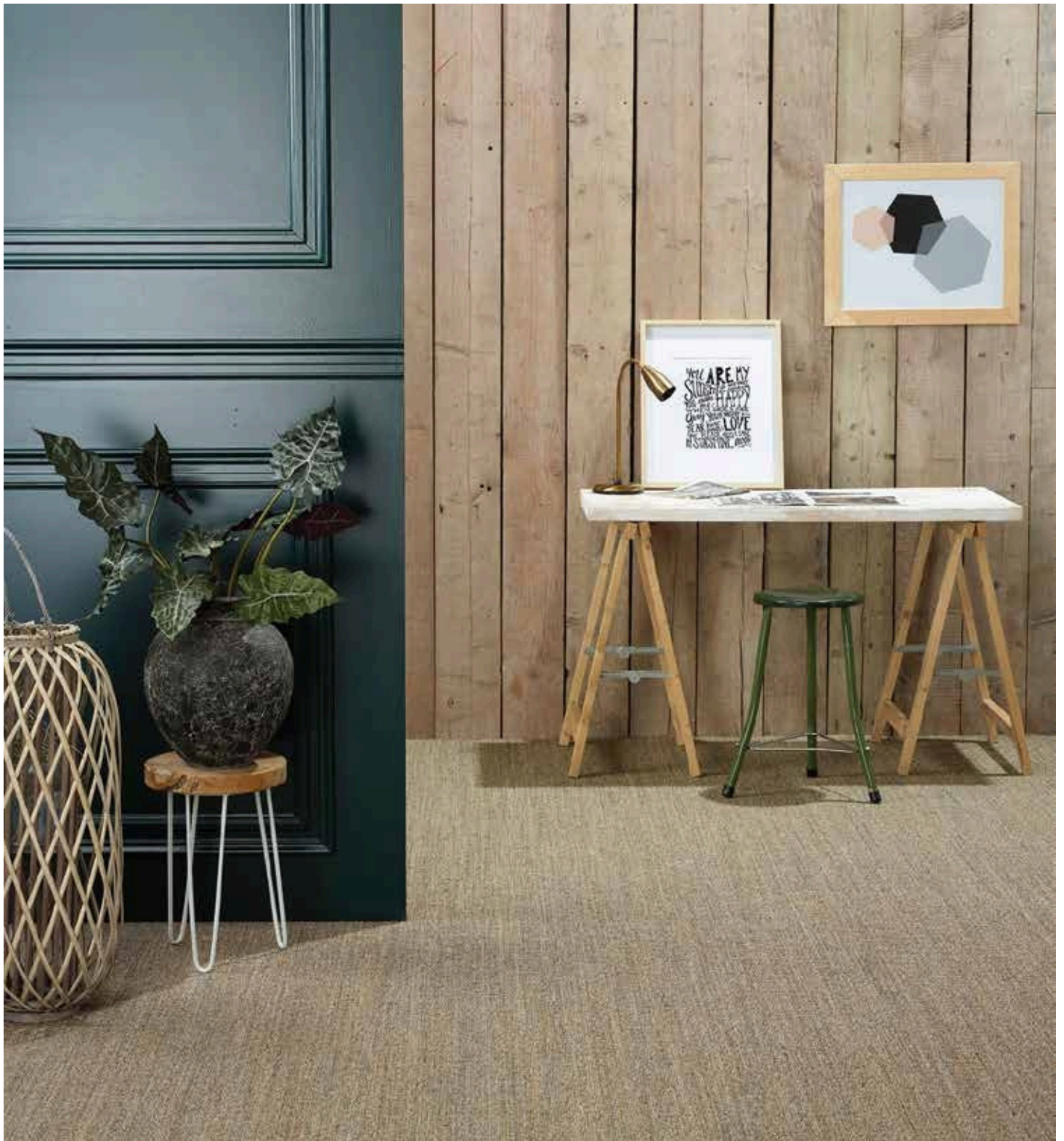
Mini Boucle 8047



Mini Boucle 8033



Mini Boucle 8042



Mini Boucle 8011



Mini Boucle 8070



Sisal KOM Bi-colour



KOM Bi colour 217



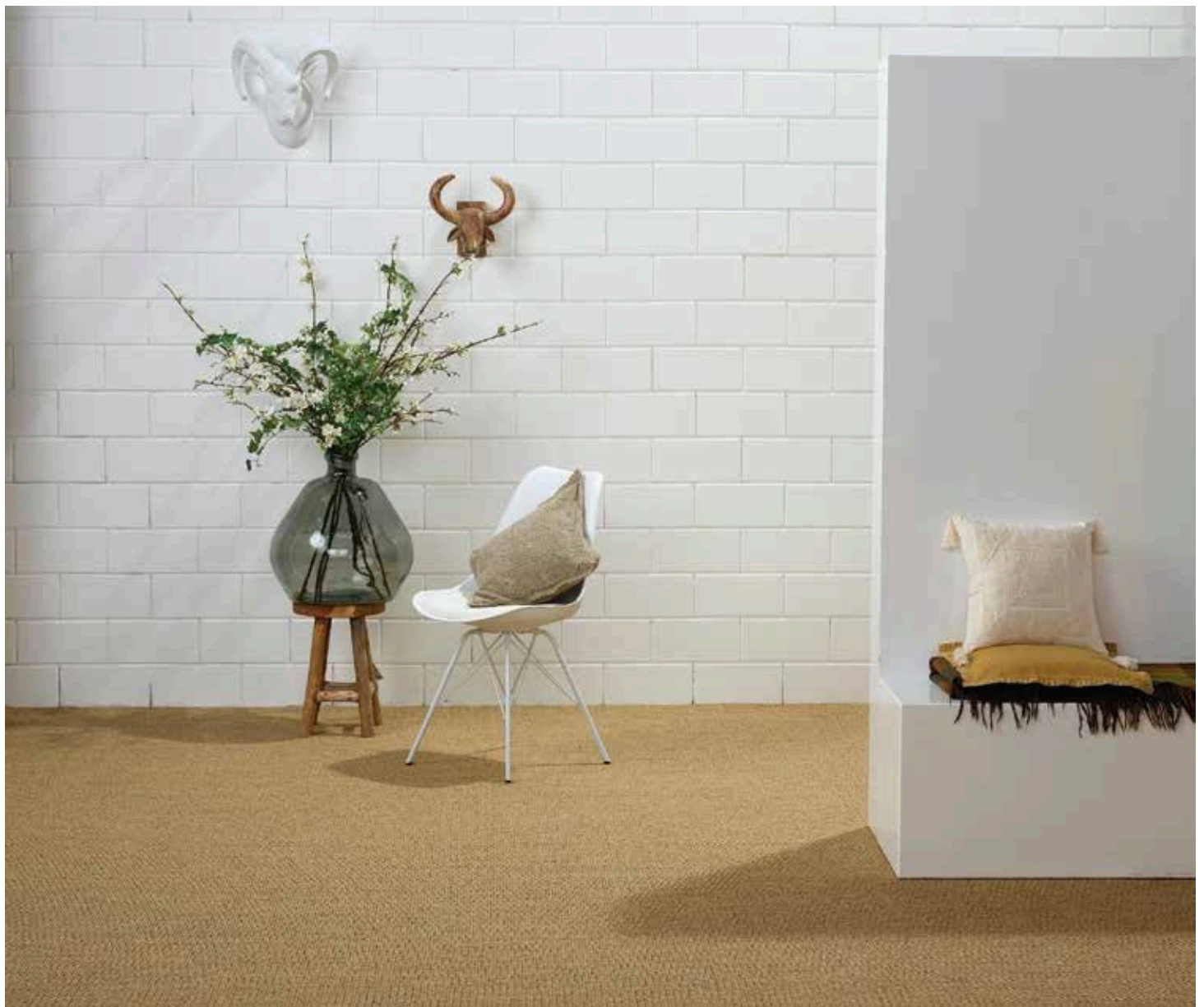
KOM Bi colour 220



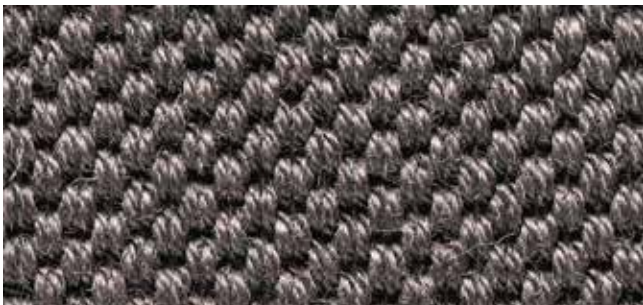
KOM Bi colour 245



KOM Bi colour 203



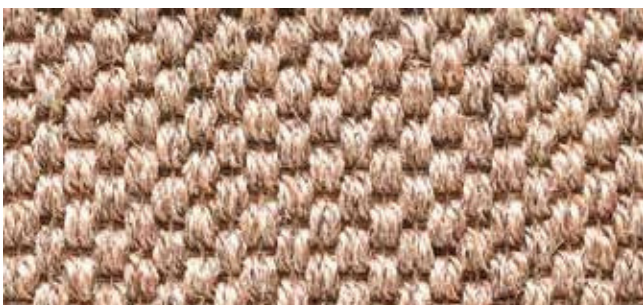
Sisal Tigr



Tigra 9004



Tigra 9070



Tigra 9042



Tigra 9001



Tigr 9007



Tigr 9000



Sisal Sambrossa



Sambrossa 9101



Sambrossa 9104



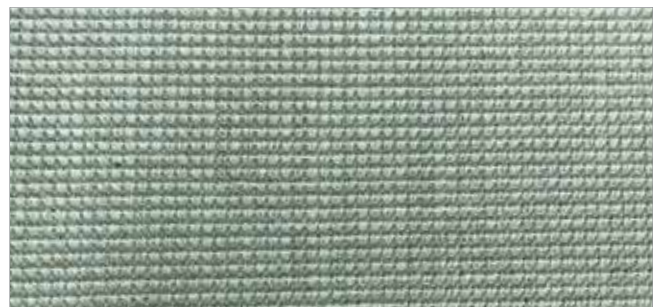
KOM 011



Sisal Recife



Recife 13



Recife 14



Recife 15



Recife 18

SISAL

Sisal (the name of a Yucatan port in Mexico) is a noble fibre, long and supple, made from the leaves of the Agave Sisalana, a subtropical plant from South America. These fibres are collected by passing the leaves under water and pressing them. They are then washed, dried and spun.

Used since time immemorial for ropes, sisal is now used as a natural floor covering, highly prized for its sure effect in the decoration of the home. Its natural colour is creamy white, but sisal is the plant fibre that best accepts dyes.

It lends itself to the use of intense colour for contemporary harmonies. Resistant to wear and rubbing, soft to the touch, but not recommended in damp rooms, our sisal floor covering are particularly appropriate for bedrooms, sitting rooms, corridors, stairs, private and professional offices, as well as stores and shops.

To keep its beautiful appearance a long time, sisal needs regular upkeep and careful use (see care instructions)

LAYING RECOMMENDATIONS

Our natural floor coverings, now available on a felt backing, must be laid according to the rule book.

Before cutting, it is essential to unfold these covering on their future base and leave them to acclimatize for 48 h to allow them to adopt to the hygrometry of the room.

As fibre is a living material, it may register a few variations in measurement. So it is necessary to plan a safety margin.

After following all these precautions of use, stretch this covering across the room so that it extends up the skirting boards, glue half to the base with acrylic paste, starting from the centre of the room towards the edges, pressing firmly down so as to guarantee perfect adherence, proceed in the same way for the other side. To finish, just cut the base along the skirting boards.

CARE INSTRUCTIONS

These natural floor covering require regular upkeep and careful use. So that they keep their beautiful appearance longer, vacuum regularly, taking care to brush without rubbing. In addition, once or twice a year, depending on the wear, it is advisable to (dry) clean the base thoroughly.