

NOT IN STOCK - AS PER ORDER ONLY AVAILABLE

Safetred Safety Floors



FLOORCOVERINGS WITH ENHANCED SLIP RESISTANCE

VINYL



Safetred Aqua

- > Vinyl safety floorings, with a choice of R11 and wetroom ranges
- > Sustainable slip performance throughout product life
- > Safety Clean Polyurethane (PUR) surface protection for improved stain resistance and easy maintenance
- > Product backing made from recycled flooring for reduced environmental impact



Safety floors from Tarkett

for areas where enhanced slip
resistance properties are required

Why safety floorings?

Some areas might be quite sensitive to slippery surfaces and the danger of falling. The floor material installed can of course be one cause, or the cleaning agents, but also the presence of liquid or other contaminants on its surface: water, drink, grease, oils...

However, most slip and fall injuries are preventable. And the installation of floor coverings with enhanced slip resistance properties will help you reduce these risks.

For safer underfoot commercial areas

Tarkett Safety floorings with Safety Clean PUR Reinforcement are the new high performance alternative to traditional safety floors.

For more demanding areas, **Safetred Aqua** provides **R11** slip resistance. **Safetred Aqua** is the ideal solution for wet room areas.

Sustainable performance

**Excellent slip resistance
for the lifetime of the flooring**

The Safetred ranges all meet the requirements of the new manufacturing standard, EN 13845, that has set new conditions with consideration to wear resistance and the sustainability of the slip resistance properties. With the Safetred collection, you will be assured of sustainable slip resistant performance throughout the product life.



NOT IN STOCK - AS PER ORDER ONLY AVAILABLE

Areas of use

- > Hospitals
- > Retirement & care homes
- > Kitchens & canteens
- > Food preparation areas
- > Restaurants & dining areas
- > Classrooms & laboratories
- > Ramps & walkways
- > Stores & shops
- > Toilets & washrooms
- > Wet room areas (Safetred Aqua)



Modern design

Design has not been forfeited at the cost of performance. The Safetred collection is available in a large pallet of colours and designs to suit any environment. Discover the fresh plain colours of Safetred Universal or the vibrant colours enhanced with decorative granules in Spectrum. Or let yourself be drawn to the 3D decorative flake effect of Safetred Dimension or the warmth and timeless effect of Dimension Wood.

Safety Clean (PUR reinforcement): don't choose between slip resistance and easy cleaning!

Safetred products all have a Safety Clean PUR reinforcement that provides a durable and easy to clean surface. Maintenance costs are cut and the environment is preserved (less water and cleaning chemicals used).

This unique polyurethane treatment is reinforced with slip resistant granules in addition to those within the wear layer of our Safetred ranges to provide lasting performance.

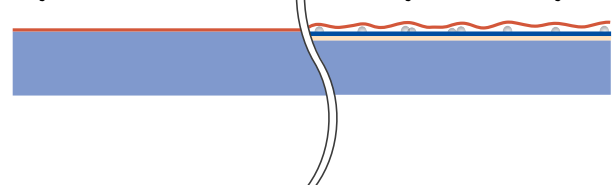


- Improved resistance to soiling and staining
- Easier to clean and maintain than traditional safety floors

An incorporated biostat also brings long lasting protection.

Vinyl Floor with PUR

Vinyl Floors with Safety Clean



Tarkett Environmental Intelligence

We see our Intelligent Flooring Solutions as part of the world's ecological system – and make strong efforts to secure that all our activities are based on respect for the environment. All our flooring products are developed, produced and handled with a great concern for sustainability and environment. We call it Environmental Intelligence and live by this principle in every single step, from vision to waste.



Environmental Intelligence in our vinyl flooring

Tarkett introduced the first vinyl flooring more than 60 years ago, and environmental sustainability has always been in focus for us.

- Low energy consumption
- Easy and lowest maintenance cost ever
- Low emissions

NOT IN STOCK - AS PER ORDER ONLY AVAILABLE

Safetred Aqua

For barefoot comfort

The non abrasive surface of **Safetred Aqua** provides added comfort in barefoot areas especially showers. The unique construction makes it highly flexible and perfect for coving and installing into drains and falls. Complementing the Aquarelle Wall HFS collection, there is a choice of 12 colours to suit any interior.



Features and benefits

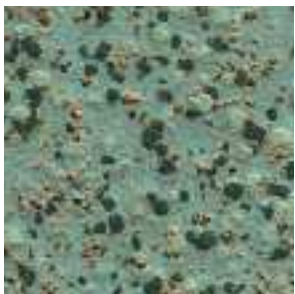
- > Superb performance in wet areas: Provides R11 slip resistance
- > Safety Clean PUR reinforcement: Improved stain resistance, ease of maintenance and reduced cleaning costs
- > Improved flexibility: easy to install in falls and drains
- > Incorporates Biostat: assists in the prevention of biological and fungal growth
- > Ideal for wet areas: bathrooms, showers and changing rooms
- > Manufactured to EN13845: ensures sustainable slip performance throughout product life
- > Product backing made from recycled flooring: Reduced environmental impact
- > Attractive range of 12 colours: Complements the Tarkett wet wall options

NOT IN STOCK - AS PER ORDER ONLY AVAILABLE



Wallaby

3816 100



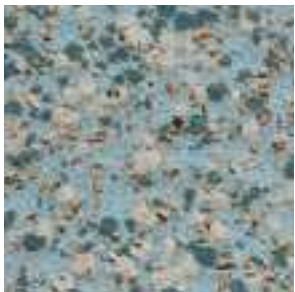
Fox

3816 101



Cheetah

3816 103



Tapir

3816 106



Gazelle

3816 107



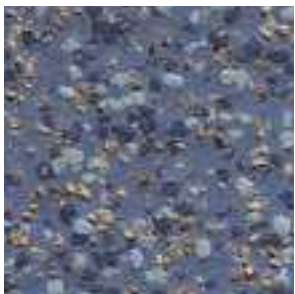
Koala

3816 108



Vole

3816 110



Elk

3816 111



Marmoset

3816 112



Otter

3816 113



Antelope

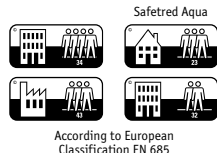
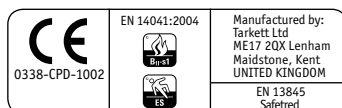
3816 116



Lynx

3816 119





Safetred Safety Floorings

DESCRIPTION

Slip resistant heavy duty floorcoverings with Safety Clean PUR reinforcement, in sheet format.
Product standard: EN 13845.

| Technical data | Standards | Safetred Dimension/ Dimension Wood | Safetred Spectrum | Safetred Universal Plus | Safetred Universal | Safetred Aqua |
|--|---|--|--|--|--|--|
| Certification | EN 685 domestic commercial industrial EN 13845 | Classes: 34 43 ES _f | Classes: 34 43 ES _f | Classes: 34 43 ES _f | Classes: 34 43 ES _f | Classes: 23 32 ES _b |
| Total thickness | EN 428 | 2.00 mm | 2.00 mm | 2.50 mm | 2.00 mm | 2.00 mm |
| Total weight | EN 430 | 3 000 g/m ² / 3 100 g/m ² | 3 100 g/m ² | 3 850 g/m ² | 3 100 g/m ² | 3 000 g/m ² |
| Safety Clean PUR Reinforcement | | Yes | Yes | Yes | Yes | Yes |
| Abrasion | EN 660-2 | < 10% particle loss | < 10% particle loss | < 10% particle loss | < 10% particle loss | < 10% particle loss |
| Static indentation | EN 433 | < 0.10 mm | < 0.10 mm | < 0.10 mm | < 0.10 mm | < 0.10 mm |
| Furniture leg | EN 424 | No damage | No damage | No damage | No damage | No damage |
| Castor chair | EN 425 | No damage | No damage | No damage | No damage | No damage |
| Dimensional stability | EN 434 | ≤ 0.10% | ≤ 0.10% | ≤ 0.10% | ≤ 0.10% | ≤ 0.25% |
| Curl resultant to heat | EN 434 | ≤ 3 mm / ≤ 2 mm | ≤ 1 mm | ≤ 2 mm | ≤ 1 mm | ≤ 3 mm |
| Flame and smoke | EN 13501-1 ISO 9239-1 IMO A653 | B _{f1} s1 with acrylic adhesive on wood > 8 kW/m ² | B _{f1} s1 with acrylic adhesive on wood > 8 kW/m ² | B _{f1} s1 with acrylic adhesive on concrete > 8 kW/m ² | B _{f1} s1 with acrylic adhesive on wood > 8 kW/m ² Pass | B _{f1} s1 with acrylic adhesive on wood > 8 kW/m ² |
| Slip resistance | TRRL Pendulum 4S (Wet) DIN 51130 Surface roughness DIN 51097 | > 36 R10 > 20 µm | > 36 R10 > 20 µm A | > 45 R11 > 35 µm | > 36 R10 > 20 µm A | > 36 R11 > 30 µm C |
| Electrical resistance | EN 1815 EN 1081 EN 14041 | 2 kV on concrete > 10 ¹⁰ Ω | 2 kV on concrete > 10 ¹⁰ Ω | 2 kV on concrete Antistatic | 2 kV on concrete > 10 ¹⁰ Ω | 2 kV on concrete > 10 ¹⁰ Ω Antistatic |
| Impact sound reduction | EN ISO 140-8 EN ISO 717/2 ΔL _w | 6 dB / 4 dB | 7 dB | 6 dB | 4 dB | 6 dB |
| Acoustic improvement | NFS 31-074 L _{n,e,w} | 75 dB / 76 dB | 74 dB | 74 dB | 75 dB | 74 dB |
| Light fastness | EN ISO 105-B02 | 7 | 7 | 7 | 7 | 6 |
| Chemical resistance | EN 423 | Good resistance to everyday substances | | | | |
| Anti fungi treatment | | Incorporates a biostat to resist fungi and bacterial growth | | | | |
| Thermal resistance Underfloor heating | EN 12524 | 0.01 m ² K/W Suitable | 0.01 m ² K/W Suitable | 0.01 m ² K/W Suitable | 0.01 m ² K/W Suitable | 0.01 m ² K/W Suitable |
| Colours | | Dimension: 16 Dimension Wood: 6 | 20 | 9 | 16 | 12 |
| Form of delivery | EN 426 | Rolls: 20 lm x 2 m | | Rolls: 15 lm x 2 m | | Rolls: 20 lm x 2 m |

The above information is subject to modification for the benefit of further improvement (05/08).

For more detailed technical information, please contact Tarkett. Follow Tarkett's installation and maintenance instructions carefully.
These instructions are available upon request.

NOT IN STOCK - AS PER ORDER ONLY AVAILABLE

INTELLIGENT FLOORING SOLUTIONS



SYSTEM

Providing not just a product, but a complete functional solution designed to fully meet customer needs.

SERVICE

Supporting customers from first consultation to product installation, and throughout its service life.

SAVINGS

Finding materials, construction and solutions that minimise maintenance requirements, and achieve best life cycle costs.

STYLE & DESIGN

Contributing to atmosphere, state of mind and emotion, to efficiency and sense of well-being.

SUSTAINABILITY & ENVIRONMENT

Taking the lead in promoting measures to help preserve a sustainable environment.

The Tarkett Group

- Sales Offices
- Production Sites
- Recycling units



TARKETT SALES COMPANIES

www.tarkett-commercial.com

> **Australia:** Tarkett Australia Pty Ltd – Tel. +61 2 96 34 73 73 > **Austria:** Tarkett Holding GmbH, Niederlassung Wien – Tel. +43 1 47 88 062 > **Baltic States:** Tarkett SAS – Tel. +370 37 262 220 > **Belgium:** S.A. Tarkett NV – Tel. +32 2 520 04 67 > **China:** Tarkett Asia Pacific Limited Shanghai Representative Office – Tel. +86 (21) 60 95 68 38 > **Czech Republic:** Tarkett SAS, org. slozka – Tel. +420-271 001 602 > **Denmark:** Tarkett A/S – Tel. +45 43 90 60 11 > **Finland:** Tarkett Oy – Tel. +358 9 5406 5870 > **France:** Tarkett SAS – Tel. +33 1 41 20 42 49 > **Germany:** Tarkett Holding GmbH, Bereich Objekt – Tel. +49 6233 810 > **Greece:** Tarkett Monoprosopi Ltd – Tel. +30 2 10 576 3889 > **Hong Kong:** Tarkett Asia Pacific Ltd. – Tel. +852 2511 8716 > **Hungary:** Tarkett SAS – Tel. +36 1 437-8150 > **Italy:** Tarkett S.p.A. – Tel. +39 02 893 411 > **Luxembourg:** Tel. +352 949 211 8804 > **Middle East:** Tarkett Middle East – Tel. +961 1 51 3363/4 > **Netherlands:** Tarkett Benelux B.V. – Tel. +31 76 57 80 760 > **Norway:** Tarkett AS – Tel. +47 32 20 92 00 > **Poland:** Tarkett Wyk[adzyn] Sp. z o.o. – Tel. +48 22 639 31 66 > **Portugal:** Tarkett SA – Tel. +351 21 427 64 20 > **Russian Federation:** Tarkett Russia – Tel. +7 4 95 777 69 83 > **Slovakia:** Tarkett SAS – Tel. +421 37 6515 404 > **Singapore:** Tarkett Far East – Tel. +65 67 43 53 84 > **South East Europe:** Tarkett Trade d.o.o. – Tel. +381 21 7557 649 • (44) 569 12 21 > **Spain:** Tarkett Floors S.L. – Tel. +34 91 358 00 35 > **Sweden:** Tarkett Sverige AB – Tel. +46 771 25 19 00 > **Switzerland:** Tarkett Holding GmbH, Bereich Objekt Schweiz – Tel. +41 043 233 79 24 > **Ukraine:** Tarkett UA – Tel. +380380 (44) 569 12 21 > **United Kingdom:** Tarkett Ltd – Tel. +44 (0) 1622 854 040 > **North America:** Johnsonite – Tel. +1 440 543 8916 > **Tarkett Inc. USA:** Tel. +1 713 869 5811 > **Tarkett International:** Tel. +49 6233 811 755 – Tel. +33 1 41 20 41 01

NOT IN STOCK - AS PER ORDER ONLY AVAILABLE