



# RUShtiles

*Heavy Duty Commercial  
Carpet Tiles*  
50 X 50 cm





Beige 561



Chocolate 945



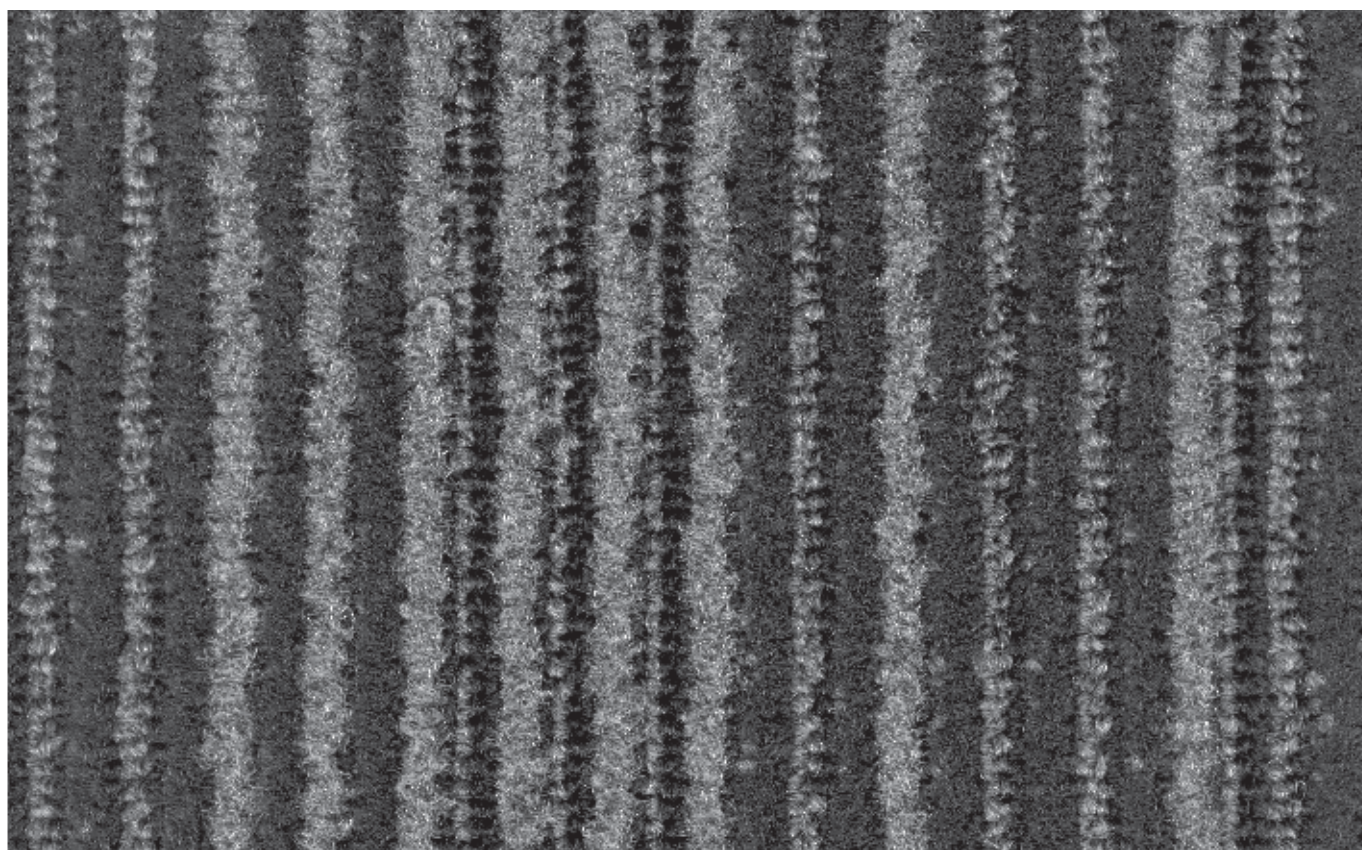
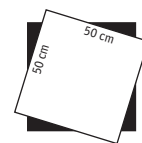


Light Blue 655

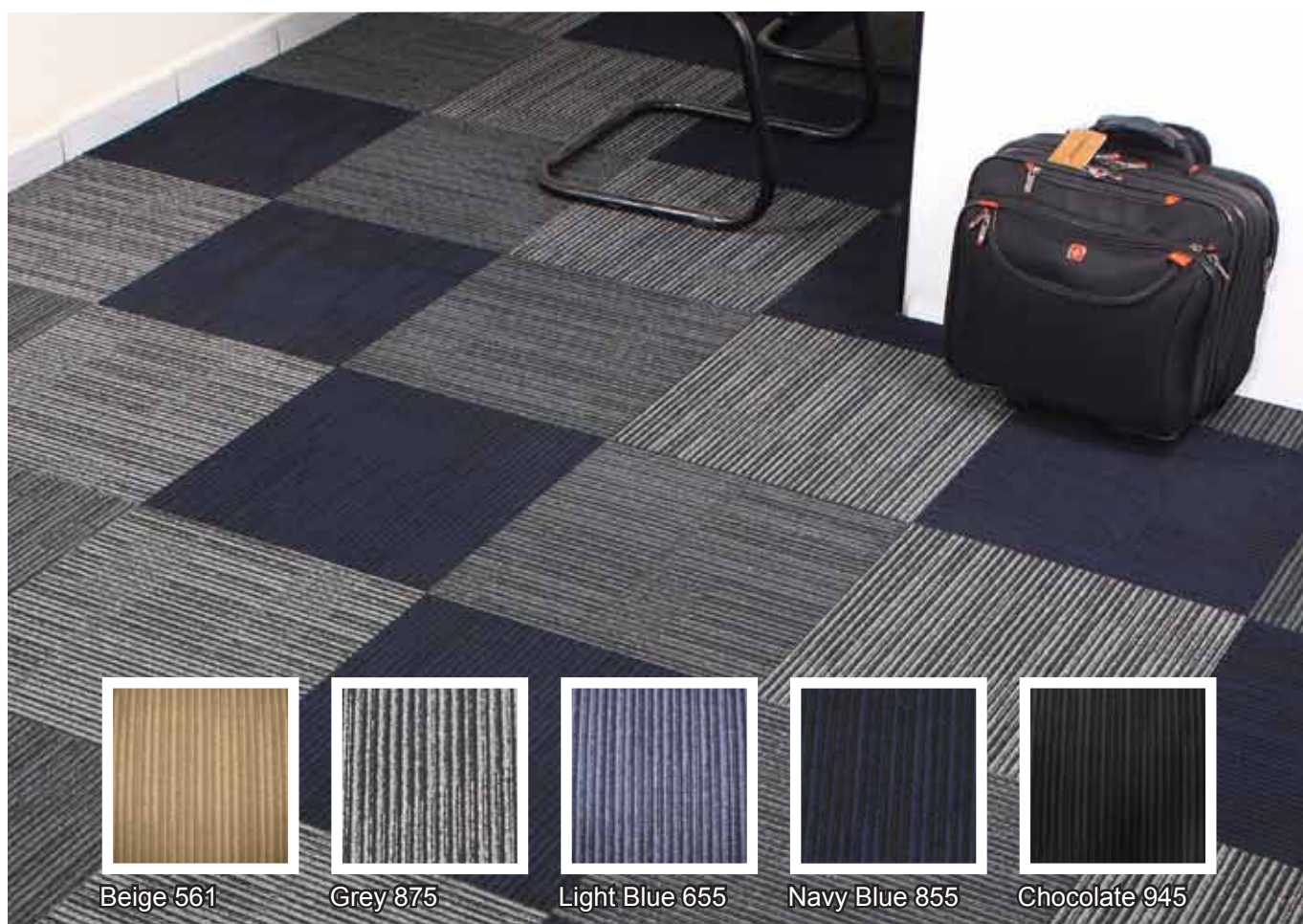


Navy Blue 855

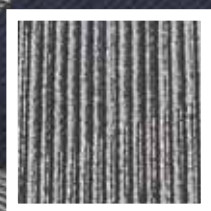




Grey 875



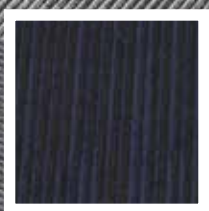
Beige 561



Grey 875



Light Blue 655



Navy Blue 855



Chocolate 945

## Rush Features

The Rush tiles collection have been designed with intelligent features that provide significant cost savings during the lifecycle of the product.

### Design

- Mix and match for endless design possibilities
- Soft underfoot in comparison to timber and ceramics
- Natural sound absorbing properties ~ 24db
- Cost savings over life cycle of product vs broadloom

### Installation

- Less wastage carpet tiles 2-3% vs broadloom 7-8%
- Easy to handle 5sqm boxes for high rise installations
- OHS - 5sqm boxes lighter and smaller than rolls
- Boxes are packed on pallets for easier overall handling

### Installation

- Ultragard Soil and Stain protection means won't want to stick
- Provides easy access to underfloor cabling
- DIY Maintenance
- Longer life cycle 15-20% vs broadloom
- End of life cycle savings on replacement of carpet
- Environmental advantages of using modular carpet

## Ultragard soil and Staining Protection



Solution Dyed Nylon (SDN) fibres have a proven track record superior performance in commercial installations.

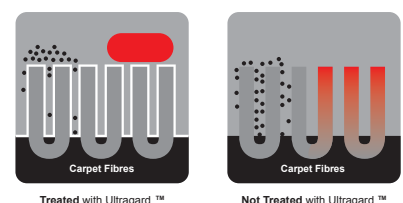
They deliver outstanding resistance to soiling, staining, crushing and wear. The dying method also ensures superior colour fastness.

In addition to the inherent benefits of the Solutions Dyed Nylon fibre, this collection includes the benefits of Ultragard.

Ultragard is an invisible shield against soiling and staining, which is applied during the manufacturing process of the carpet.

The advantages of using Ultragard treated carpet are as follow:

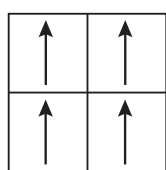
- Easier Maintenance, Dirt does not want to stick to Ultragard
- Spills are repelled for longer, providing opportunity for spot cleaning
- Anti Soiling properties facilitates removal of every day stains and dirt
- Carpet stays cleaner 2-3 times longer than non treated carpet
- Carpet sustains a newer look for longer



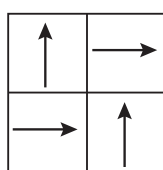
# RUSHtiles

## Technical Specifications

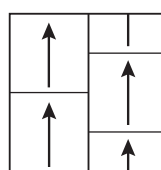
Product	: Rush
Construction	: Loop Pile and Tip Sheared
Yarn/ Fibre	: 100% Solution Dyed Nylon
Dye Method	: Solution Dyed
Pile Weight	: 600g/m <sup>2</sup>
Pile Height	: 4.0mm to 3.0mm
Gauge	: 1/12
Tile size	: 50 x 50cm
Backing	: Thermoplastic with reinforced fibre glass
Total Thickness	: 7.0mm
Total Weight	: 4.9kg/m <sup>2</sup>
Dimensional Stability	: < 0.15%
Electrostatic Propensity	: <3.0kv
Fire Rating ISO 9239.1	: 4.4kw/m <sup>2</sup> Critical Radiant Flux
Adhesive	: ECO-800 Pressure Sensitive Low VOC
Installation Method	: Quarter Turn (preferred)



Monolithic



Quarter Turn



Ashilar



Sound  
Insulation



Heat  
Insulation



Anti-static



Colorfast



Wearproof



Anti-  
flammability

**Terms and Conditions:** Specifications are subject to manufacturing tolerances and maybe changed without prior notice. Dye lots may vary in colour from sample and between production lots. All product purchases are subject to Messara Trading Standard Terms and Conditions of Sale. Please refer to our Installation Guideline, Maintenance Manual and Warranty Document for further clarification.

**Disclaimer:** This Brochure is presented for informational purposes only. Every effort is made to ensure that carpet images are of an accurate representation of the product. However, they are for illustrative purposes only and colour variations may occur in actual product, and between die series. Please note that lineal patterns when installed directional, may produce an undesired effect when lines of the same colour meet of two edges. Installers need to monitor this during installations and reposition tiles where appropriate. Patterns that are random in nature may contain additional colour ways to the ones displayed on the samples. Please consult your commercial sales consultant for further informations.

