



**MOSQUE CARPET COLLECTION**

# MZ 6 MM



## MZ 6 MM MOSQUE CARPET SPECIFICATION

Construction	: Cut Pile
Fiber	: 100% Soutlion Dyed Olefin
Gauge	: 1/8"
Pile Height	: 6 mm
Total Height	: 8 mm
Stitches per 10cm	: 33
Tufted Weight	: 550gr/m <sup>2</sup>
Total Weight	: 1550gr/m <sup>2</sup>
Secondary Backing	: Action Backed
Width	: 4.00m



LIGHT GREEN



RED



DARK GREEN

# MZ 8 MM



## MZ 8 MM MOSQUE CARPET SPECIFICATION

Construction	: Cut Pile
Fiber	: 100% Soutlion Dyed Olefin
Gauge	: 1/8"
Pile Height	: 8 mm
Total Height	: 10 mm
Stitches per 10cm	: 44
Tufted Weight	: 750gr/m <sup>2</sup>
Total Weight	: 1750gr/m <sup>2</sup>
Secondary Backing	: Action Backed
Width	: 4.00m



LIGHT GREEN

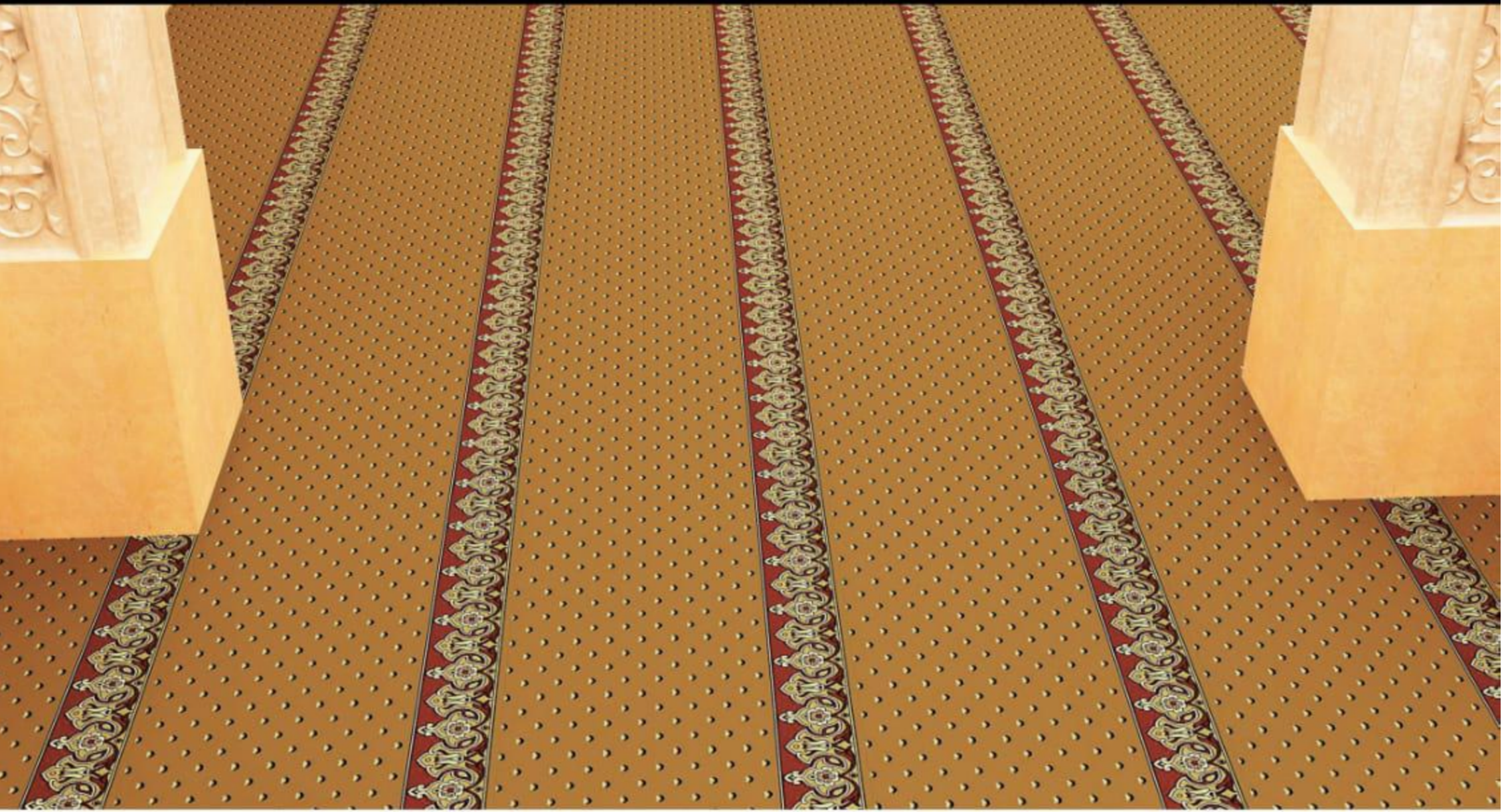


RED



DARK GREEN

# RAYAN



## RAYAN MOSQUE CARPET SPECIFICATION

Composition	: 100% PP
Pile Yarn	: 1800 dtex
Pile Height	: 10 mm
Total Height	: 12mm
Stitches per 10cm	: 51
Lancet	: 22 Lancet
Total Weight	: 1800 gr
Density	: 32*44
Points	: 256.000 Points
Width	: 4.00m



022 BERBER



062-GREEN



042 RED

# MZ 10 MM



## MZ 10 MM MOSQUE CARPET SPECIFICATION

Construction	: Cut Pile
Fiber	: 100% Soutlion Dyed Olefin
Gauge	: 1/8"
Pile Height	: 10 mm
Total Height	: 12 mm
Stitches per 10cm	: 51
Tufted Weight	: 1050 gr/m <sup>2</sup>
Total Weight	: 2000 gr/m <sup>2</sup>
Secondary Backing	: Action Backed
Width	: 4.00m



LIGHT GREEN

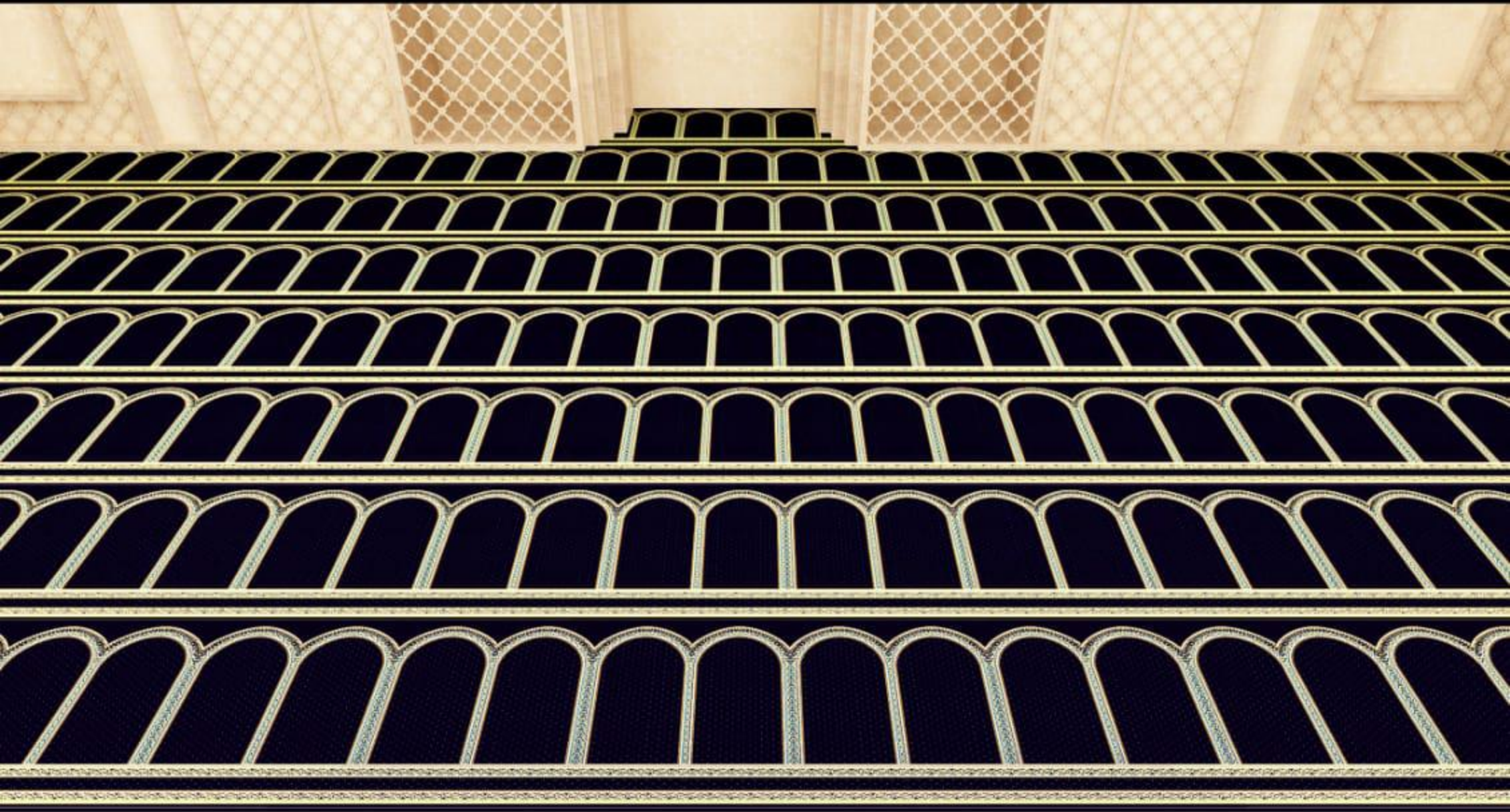


RED



DARK GREEN

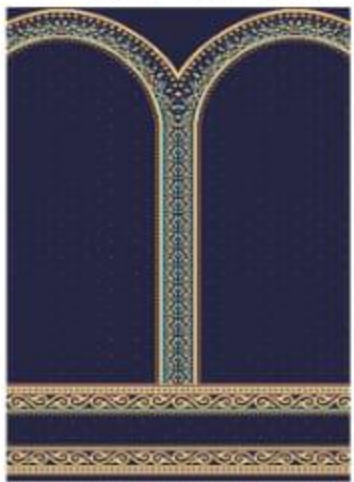
# AQSA



062 GREEN



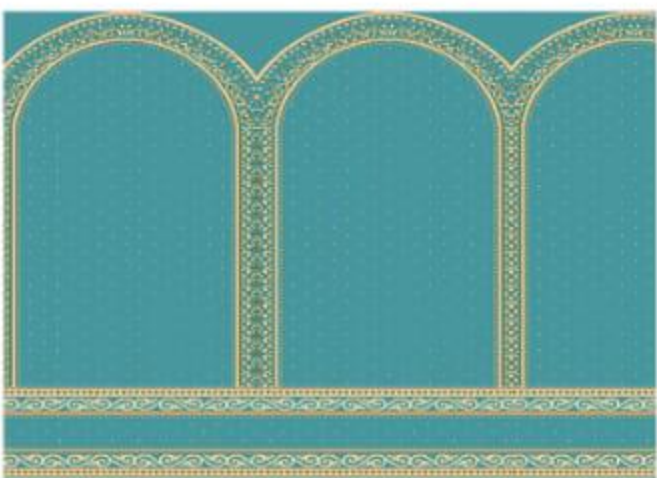
042 RED



052 NAVY BLUE



022 BERBER



056 LIGHT BLUE

## AQSA MOSQUE CARPET SPECIFICATION

Construction	: Woven Cut Pile
Composition	: 100% PP Heatset
Pile Height	: 11 mm
Total Height	: 11.5mm
Density per 10cm	: W40*L50
Backing	: Jute
Backing Coating	: Styrene Butadiene Latex
Total weight	: 2200 gr/m <sup>2</sup>
Width	: 4.00m

# MADEENA



## MADEENA MOSQUE CARPET SPECIFICATION

Construction	: Woven Cut Pile, Plain or Design
Composition	: 100% PP Heatset
Pile Height	: 11 mm
Total Height	: 11.5mm
Density per 10cm	: W40*L50
Backing	: Jute
Backing Coating	: Styrene Butadiene Latex
Total weight	: 2500 gr/m <sup>2</sup>
Width	: 4.00m



022-BERBER

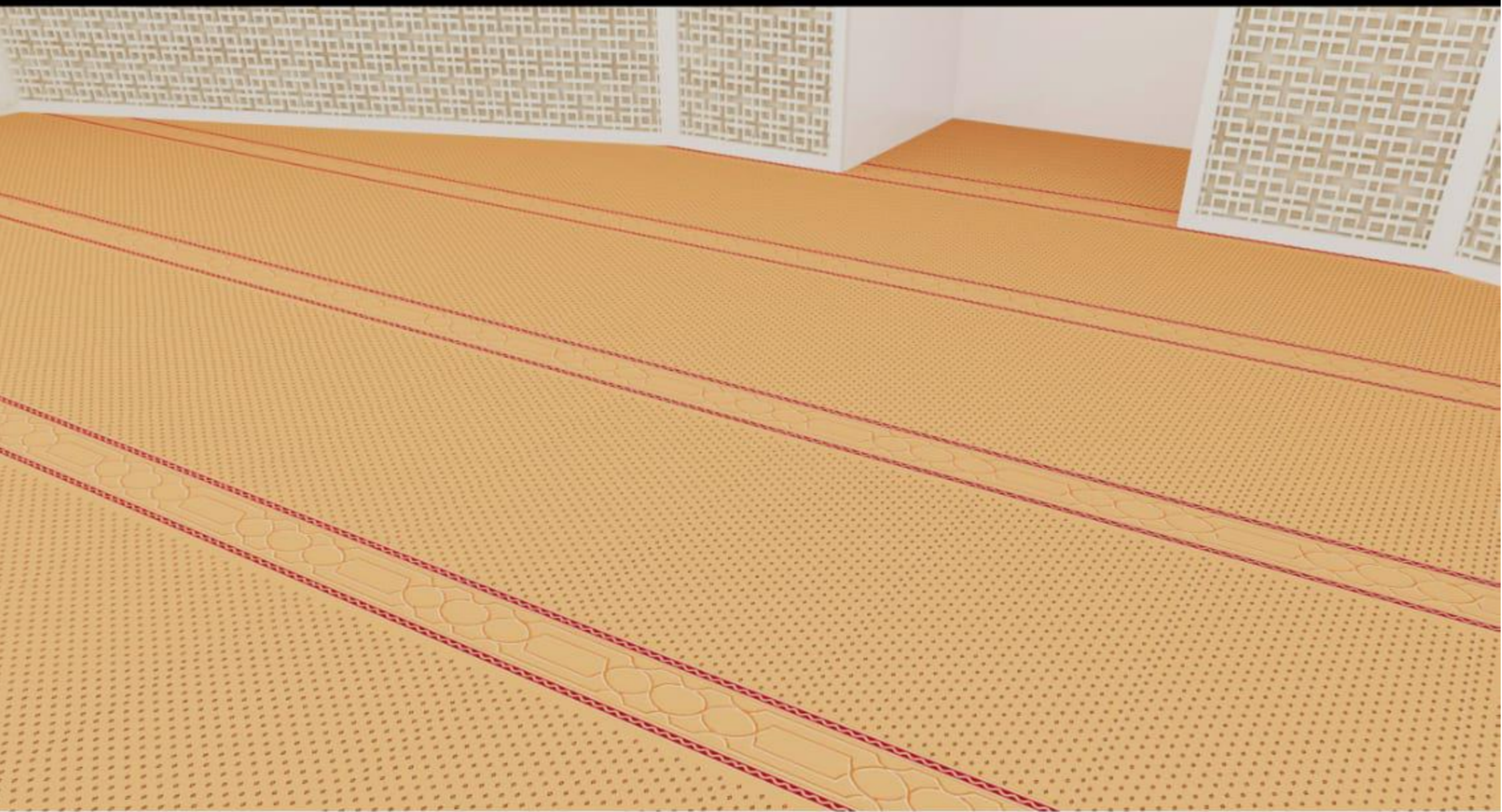


042-RED



062-GREEN

# ALQUDS



## ALQUDS MOSQUE CARPET SPECIFICATION

Construction	: Woven Cut Pile, Plain or Design
Composition	: 100% PP Heatset
Pile Height	: 11 mm
Total Height	: 11.5mm
Density per 10cm	: W40*L60
Backing	: Jute
Backing Coating	: Styrene Butadiene Latex
Total weight	: 2700 gr/m <sup>2</sup>
Width	: 4.00m



022-BERBER



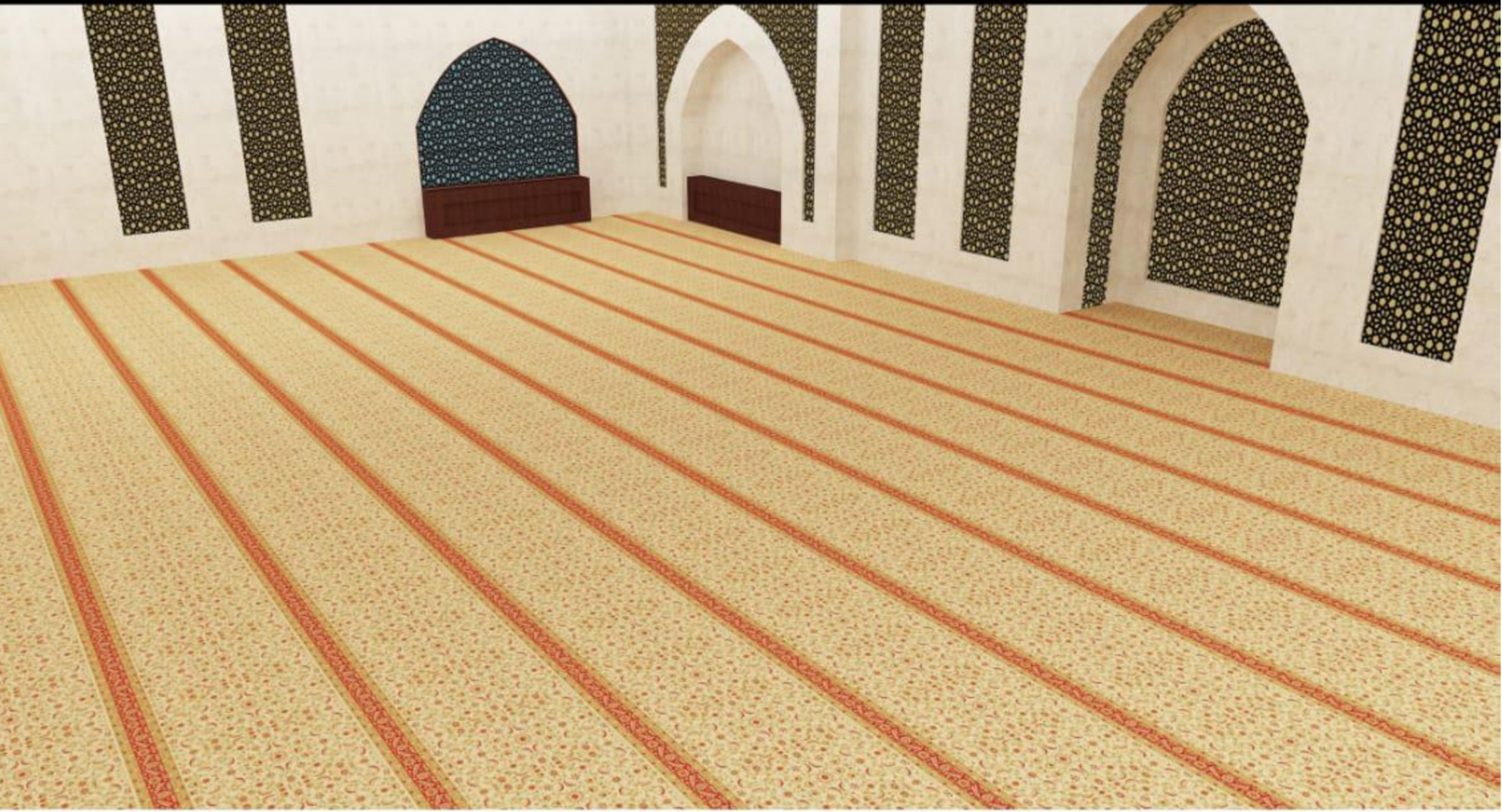
062-GREEN



042-RED



# MECCA



## MECCA MOSQUE CARPET SPECIFICATION

Construction	: Woven Cut Pile, Plain or Design
Composition	: 100% PP Heatset
Pile Height	: 11 mm
Total Height	: 11.5mm
Density per 10cm	: W42*L76
Backing	: Jute
Backing Coating	: Styrene Butadiene Latex
Total weight	: 3000 gr/m <sup>2</sup>
Width	: 4.00m



021-CREAM

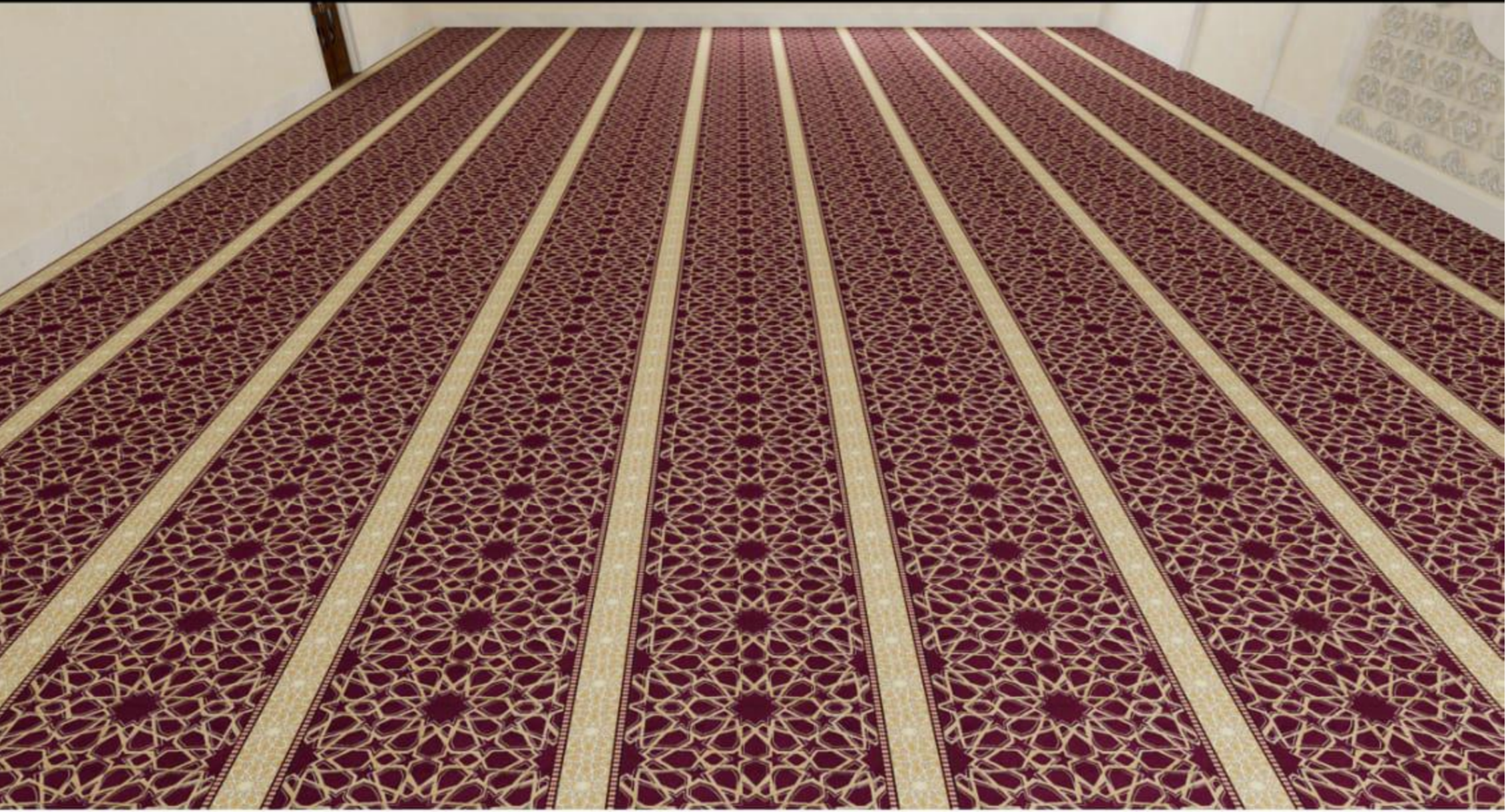


042-RED



062-GREEN

# YARMOUK



YARMOUK - 040 RED



YARMOUK - 055 BLUE



YARMOUK - 060 GREEN

## YARMOUK MOSQUE CARPET SPECIFICATION

COMPOSITION	: 100% PP HEATSET
PILE YARN	: 1900 DTEX
PILE HEIGHT	: 11MM
LANCET	: 24 LANCET
TOTAL WEIGHT	: 3300 GSM ( TOLERANCE 10% )
POINT	: 705.000 POINTS/SQM
Width	: 4.00m

# KAWTHAR



## KAWTHAR MOSQUE CARPET SPECIFICATION

Construction	: Woven Cut Pile
Composition	: 100% PP Heatset
Pile Height	: 13 mm
Points	: 585,600
Backing	: Jute
Total weight	: 3100 gr/m <sup>2</sup>
Width	: 4.00m
Made in	: Turkey



270-67 BLUE



270-56 GREEN



270-04 RED

# SAL SABEEL



## SAL SABEEL MOSQUE CARPET SPECIFICATION

Construction	: Woven Cut Pile
Composition	: 100% PP Heatset
Pile Height	: 12 mm
Points	: 700,800
Backing	: Jute
Total weight	: 3400 gr/m <sup>2</sup>
Width	: 4.00m
Made in	: Turkey



271-83 BEIGE



271-04 RED



271-56 GREEN

# SARAT



## SARAT MOSQUE CARPET SPECIFICATION

Construction	: Woven Cut Pile, Plain or Design
Composition	: 100% PP Heatset
Pile Height	: 11 mm
Total Height	: 11.5mm
Density per 10cm	: W40*L100
Backing	: Jute
Backing Coating	: Styrene Butadiene Latex
Total weight	: 3300 gr/m <sup>2</sup>
Width	: 4.00m



021-CREAM



062-GREEN



042-RED

# BADR



## BADR MOSQUE CARPET SPECIFICATION

Composition : 8% PP Heatset & 12% Polyester

Pile Yarn : 1800 dtex

Pile Height : 12 mm

Points : 800.000 Points

Lancet : 26 Lancet

Total Weight : 3500gr

Density : 40\*100

Width : 4.00m



022 - BEIGE



062 - LIGHT GREEN

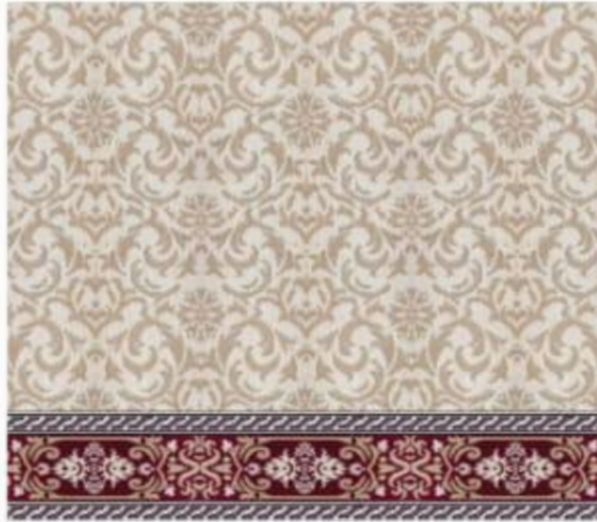


052 - BLUE



042 - RED

# DUBAI



DUBAI - 021 CREAM

## DUBAI MOSQUE CARPET SPECIFICATION

COMPOSITION	: 100% PP HEATSET
PILE YARN	: 900 DTEX
PILE HEIGHT	: 11 MM
LANCET	: 24 LANCET
TOTAL WEIGHT	: 3300 GSM ( TOLERANCE 10% )
POINT	: 705.000 POINTS/SQM
Width	: 4.00m

# TASNIM



020 - BEIGE



055 - L.BLUE



060 - GREEN



050 - NAVY BLUE



040 - RED

## TASNIM MOSQUE CARPET SPECIFICATION

Composition	: 100% PP Heatset
Pile Height	: 12 mm
Pile Yarn	: 1900 DTEX
Density per 10cm	: 42*110
Lancet	: 26 Lancet
Points	: 924.000 Points/SQM
Total weight	: 3900 gr (Tolerance 10%)
Width	: 4.00m



# ADAN

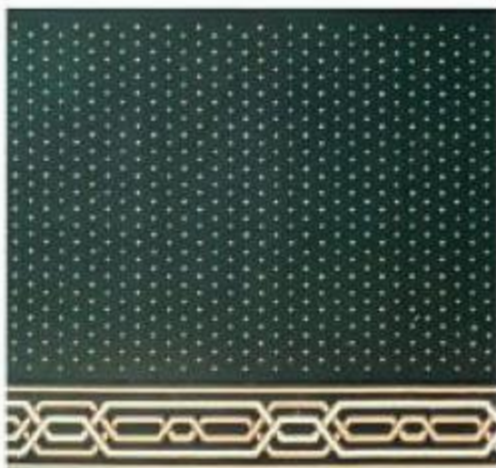


## ADAN MOSQUE CARPET SPECIFICATION

Construction	: Woven Wilton
Composition	: 100% PP Heatset
Pile Height	: 12 mm
Total Thickness	: 14 mm
Wrap Density (Reed)	: 393/mtr
Pile weight	: 3353g/sqm
Total Weight	: 4249G/SQM
Weft Density (Picks)	: 1290/mtr
Backing	: Polyester Yarns
Weft Yarns	: Jute
Pile Points	: 1,013,940/sqm
Knots	: 506,970/sqm
Width	: 4.00m



042 - RED



062 - GREEN