



Forest Sounds

NATURE SUPPLY

Forest Sounds



NATURE SUPPLY / Forest Sounds



FS180-153
Fog



FS153-13
Rustle



FS119-6
Storm



FS13-133
Night Shadow



FS153-188
Inca Gold



FS202-209
Wild Fern



FS27-109
Exotic Red



FS27-196
Island Breeze



Forest Sounds Storm in herringbone installation (outside), Night Shadow & Exotic Red in ashlar installation(inside)

NATURE SUPPLY



FS180-153 FOG



NATURE SUPPLY



FS153-188 INCA GOLD



NATURE
SUPPLY



FS153-188 INCA GOLD



FS180-153 FOG

Milliken™



NATURE
SUPPLY



FS202-209 WILD FERN

Milliken™



NATURE SUPPLY



FS202-209 WILD FERN



FS180-153 FOG

*Milliken*TM



NATURE SUPPLY



FS27-109 EXOTIC RED

Milliken™



NATURE
SUPPLY



FS27-109 EXOTIC RED



FS180-153 FOG

Milliken™



NATURE
SUPPLY

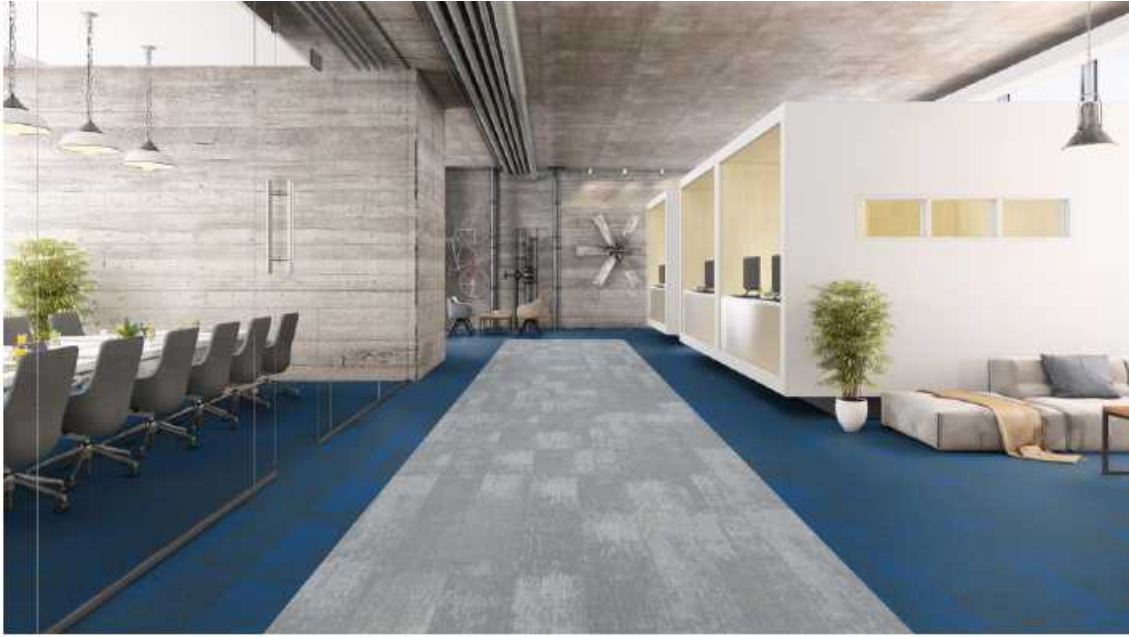


FS27-196 ISLAND BREEZE

Milliken™



NATURE
SUPPLY



FS27-196 ISLAND BREEZE



FS180-153 FOG

Milliken™



NATURE
SUPPLY



FS153-13 RUSTLE

Milliken™



Installation Methods

Option 1



Herringbone Installation with both patterns in a single color.
Forest Stone & Forest Granite of Fog

Shown on Page 12



Option 3

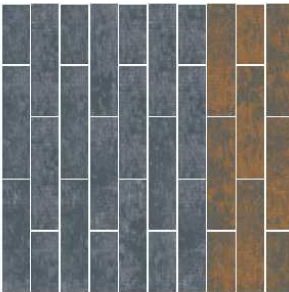


Gradation accent inserts in a Ashlar Installation with a single pattern.
Forest Granite of Fog & Island Stone

Shown on Page 20



Option 2

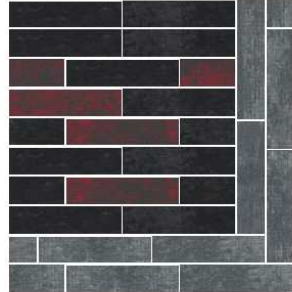


Ashlar Installation of one pattern in two different colors.
Accent color zone on the side.
Forest Stone of Fog & Topaz

Shown on Page 24



Option 4



Ashlar and Herringbone Installation demarkating different areas within the space.
3 different colors used for 1 pattern.
Forest Granite of Stone, Night Skyline & Forest Red

Shown on Page 24



Nature Supply

Forest Sounds

The babbling brook in the morning, the dense jungle at noon, the scattered rain in the evening... Nature has supplied us all the beauty and enjoyment. What is the feeling to explore the forest? Can we relax by experiencing peace in nature?

Let's get away from the tension in the office, give ourselves a chance to get close to nature and feel the gift of nature right here in the office.

NATURE SUPPLY / Forest Sounds



SPECIFICATION SHEET

Date: NOV 2021

NATURE SUPPLY

Forest Rain/Forest Sound



SPECIFICATION	
Construction	Tufted, Textured Loop
Face Fiber	100% Milliken-Certified Nylon
Tile Size	25cm x 100cm (9.8" x 39.4")
Dye Method	Solution Dyed
Gauge	1/12
Stitches	9.1
Standard Backing	PVC-Free WellBAC™ Function Available with TractionBack®
Recyclability	100%
Recycled Content By Total Weight	6.9% (4.4% Post Industrial, 2.5% Post Consumer)
Nominal Total Thickness	0.21" (5.3mm)

PERFORMANCE	WARRANTIES	
Flammability (Radiant Panel ASTM-E-648)	≥ 0.45 (Class I)	Lifetime Face Fiber Wear
Smoke Density (NFPA-258-T or ASTM-E-662)	≤ 450	Lifetime Antistatic
Methenamine Pill Test (CPSC FF-1-70 or ASTM D 2859)	Self-Extinguishing	Lifetime Floor Compatibility
Lightfastness (AATCC 16E)	≥ 4.0 at 80 Hours	Lifetime Color Pattern Permanency
Crocking (AATCC 165)	≥ 4.0 Wet or Dry	Lifetime Floor Release
Static Electricity (AATCC-134) 20% R.H., 70° F., Conductive Fiber	≤ 3.5 KV, Permanent	Lifetime Moisture Resistance
Texture Appearance Retention Rating (TARR)	Heavy	Lifetime Delamination of Backing
Indoor Air Quality—CRI Green Label Plus™	GLP3200, Carpet Category 14X	Lifetime Dimensional Stability
		Lifetime Tuft Bind
		Lifetime Edge Ravel
		Lifetime Flammability

INSTALLATION METHOD

3RD PARTY CERTIFICATES



Design Copyright - Milliken & Company.
This carpet product is covered by one or more patents, published applications and/or patents pending. Specifications are subject to normal manufacturing tolerances and may be changed without prior notice. Copies of actual test results are available upon request.

Customer Service 8621 81455588 | milliken地毯.com
© 2020 Milliken & Company | Made in China