



MAVERICK

COMMERCIAL CARPET TILES



4 Office



MAXIMA



MADE IN
BELGIUM

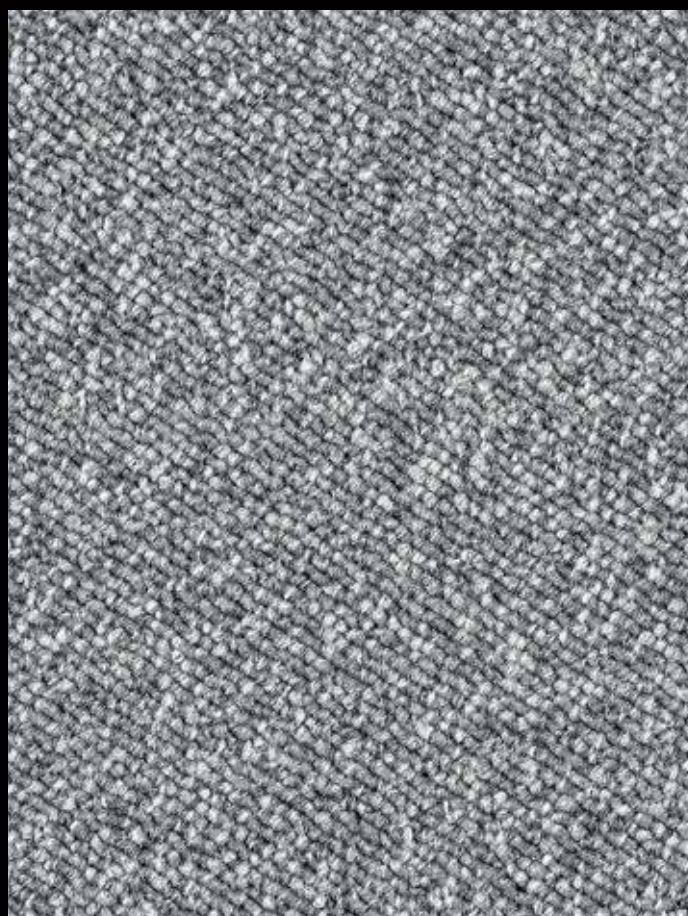


50cm
TILE

MAXIMA



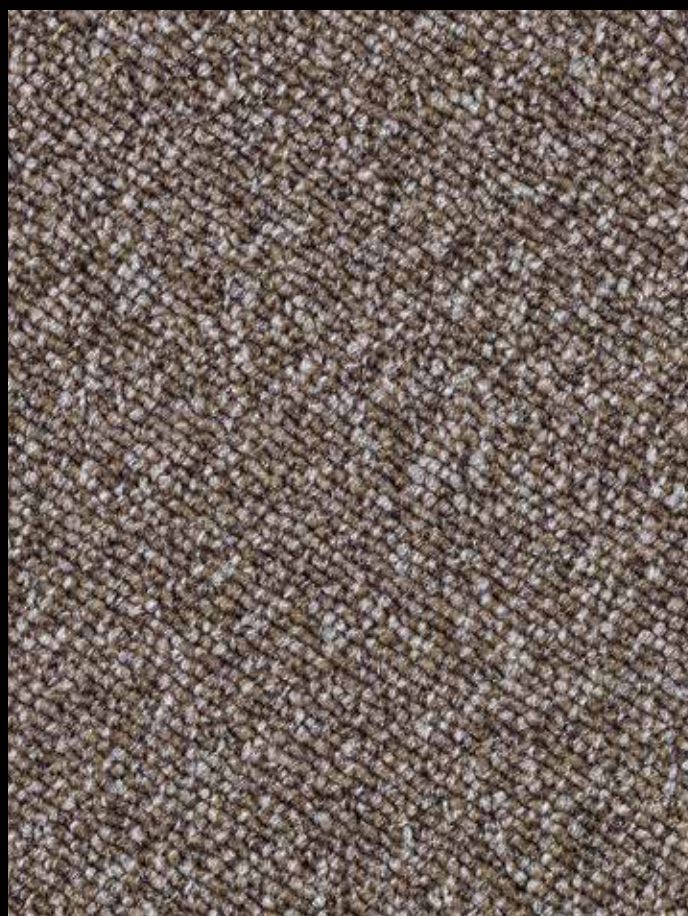
MAXIMA 33 Camel



MAXIMA 90 Granite



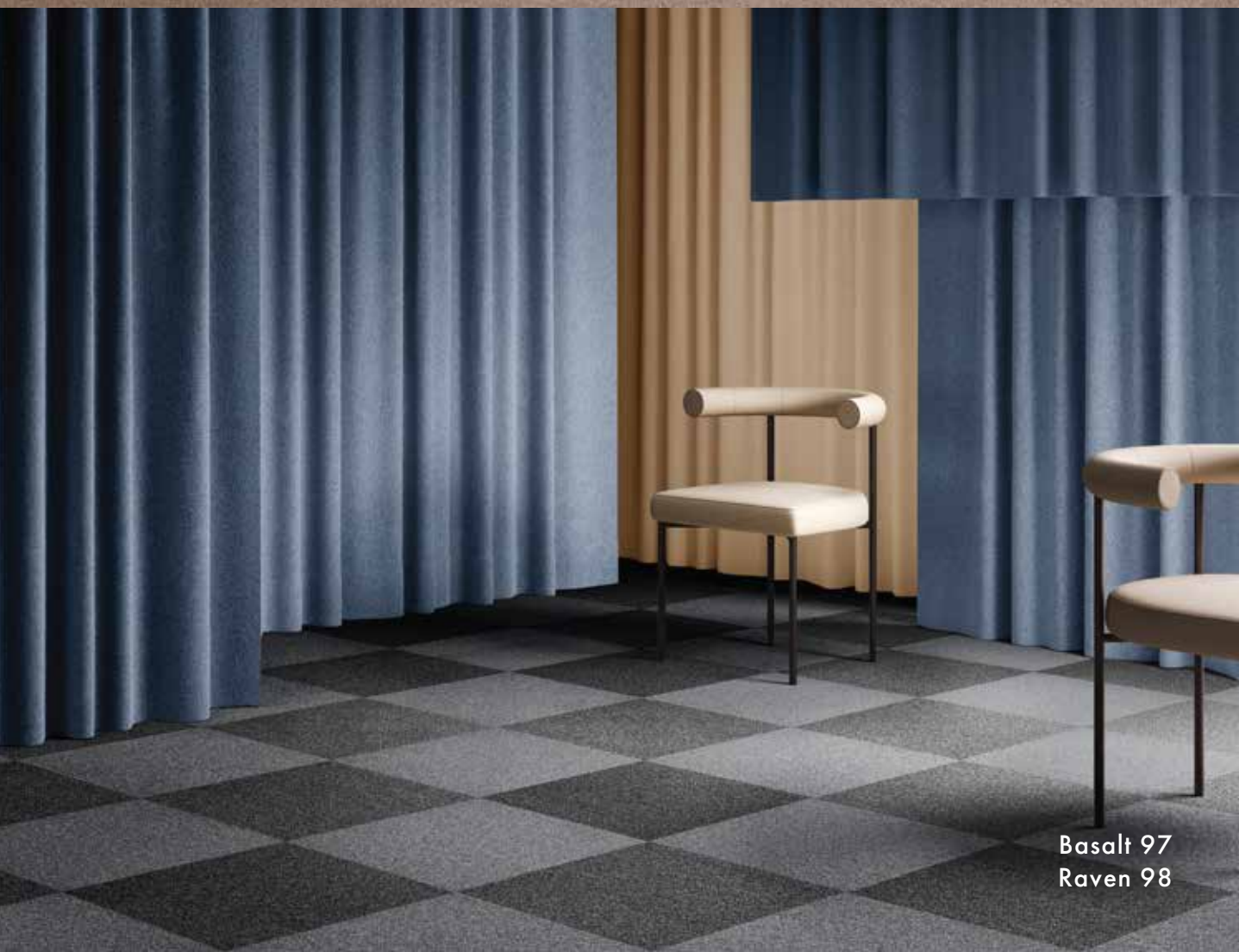
MAXIMA 37 Sandstone



MAXIMA 40 Mocca



Sandstone 37



Basalt 97
Raven 98

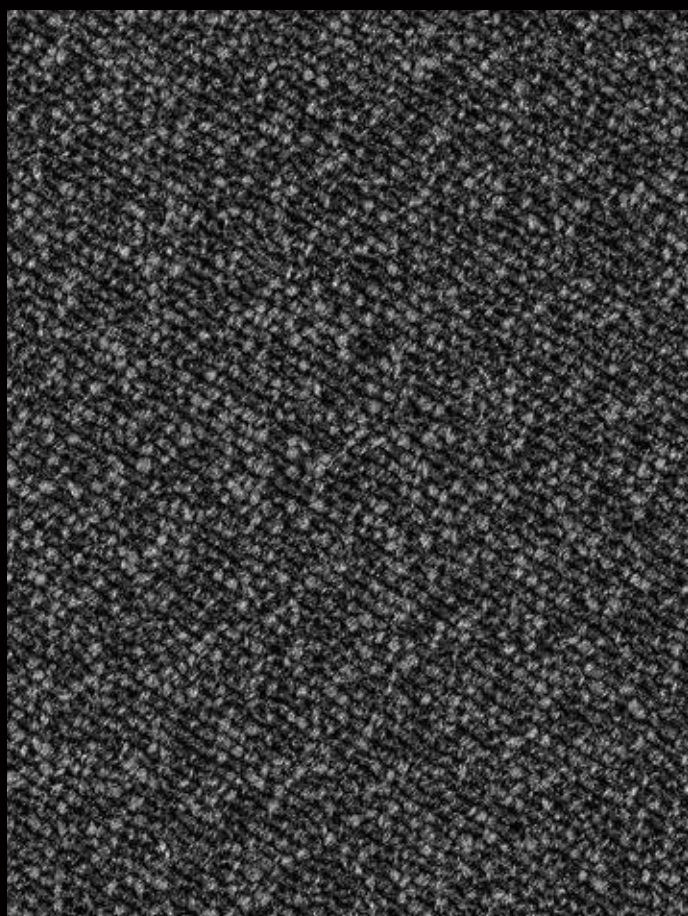
MAXIMA



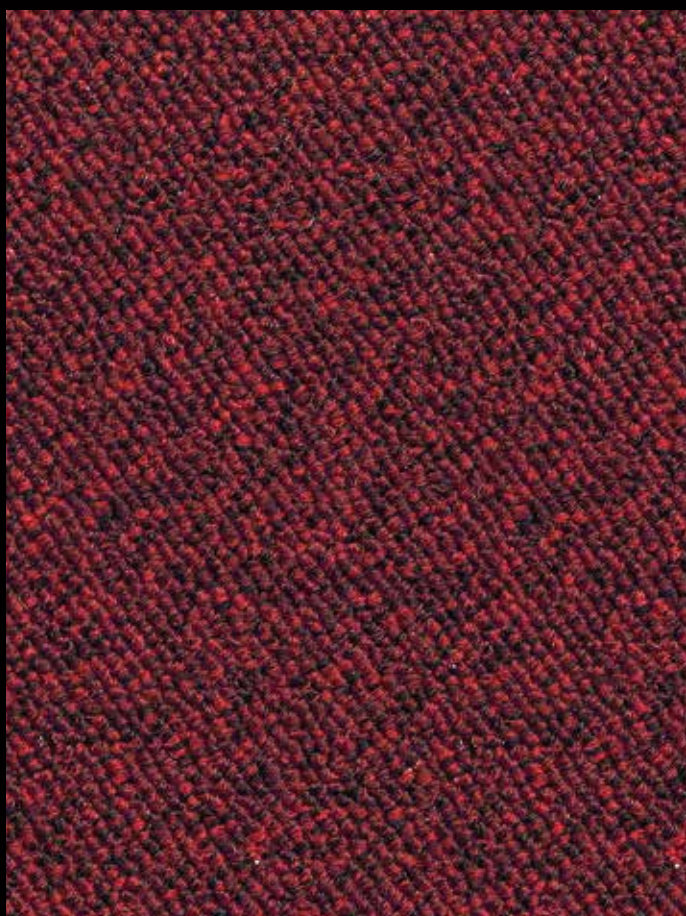
MAXIMA 21 Spring



MAXIMA 85 Terracotta



MAXIMA 98 Raven



MAXIMA 12 Monarch



Terracotta 85



Monarch 12
Smoke 94

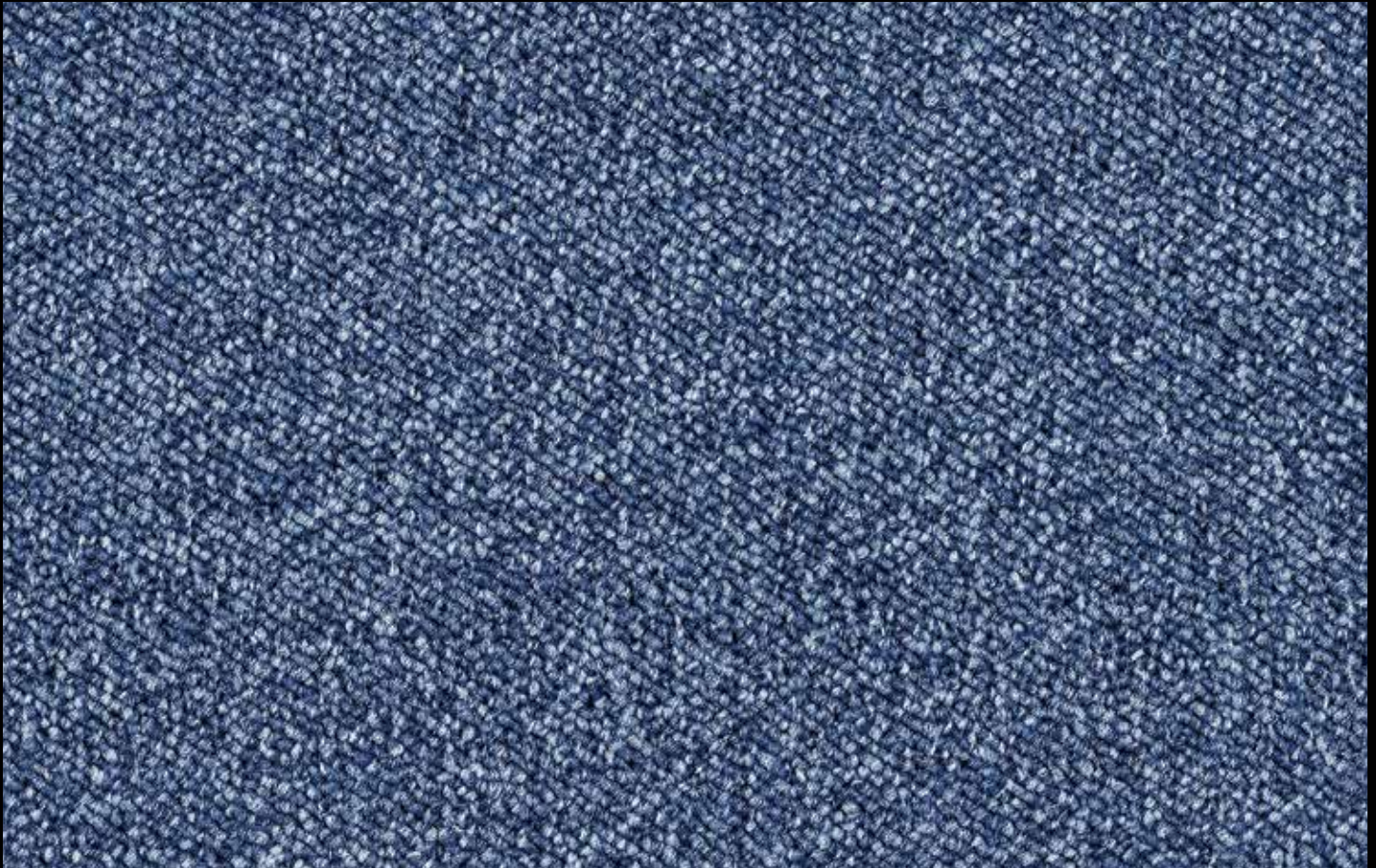


Spring 21
Camel 33

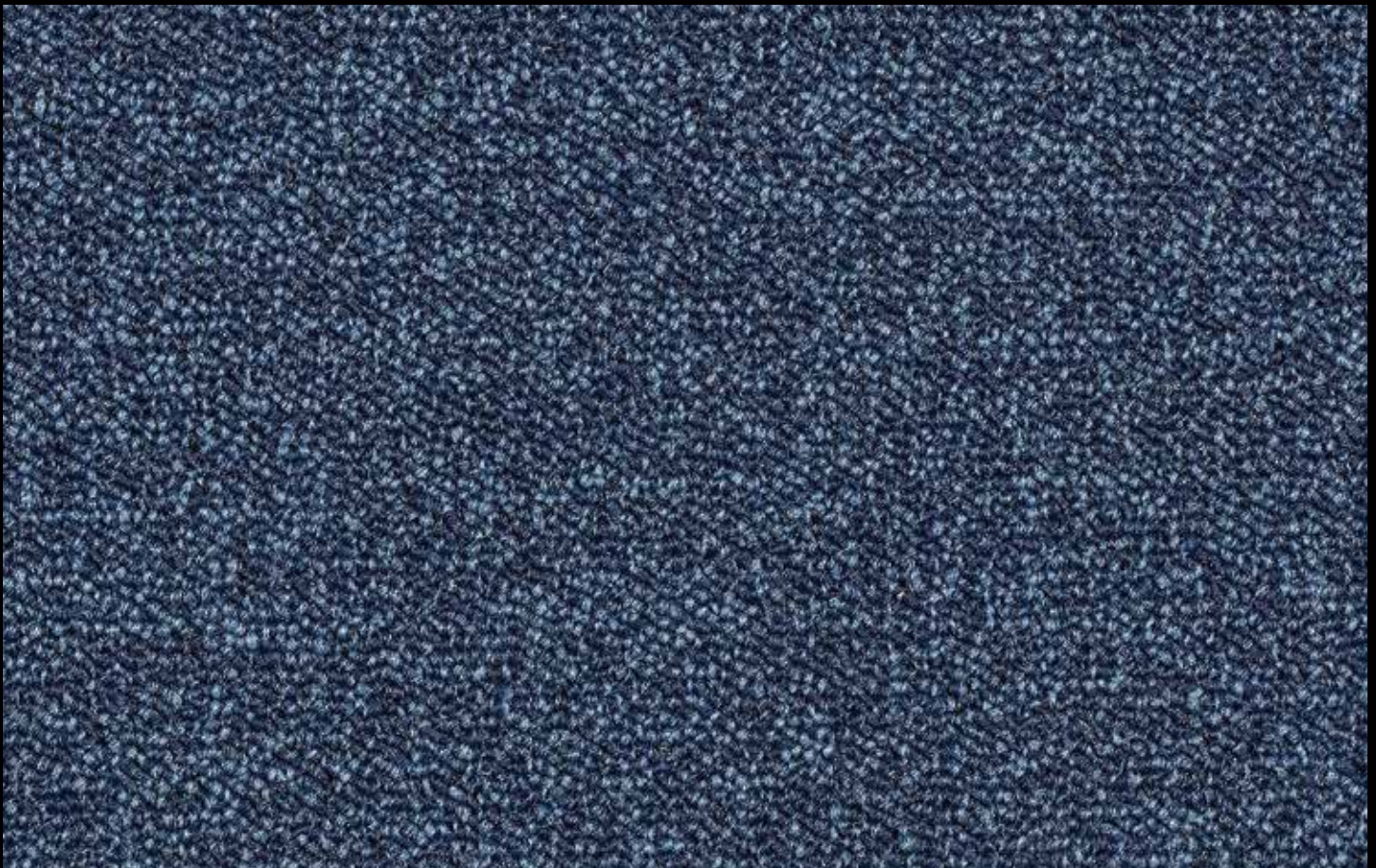


Spring 21

MAXIMA



MAXIMA 75 Neptune



MAXIMA 78 Royale



Neptune 75



Basalt 97
Neptune 75

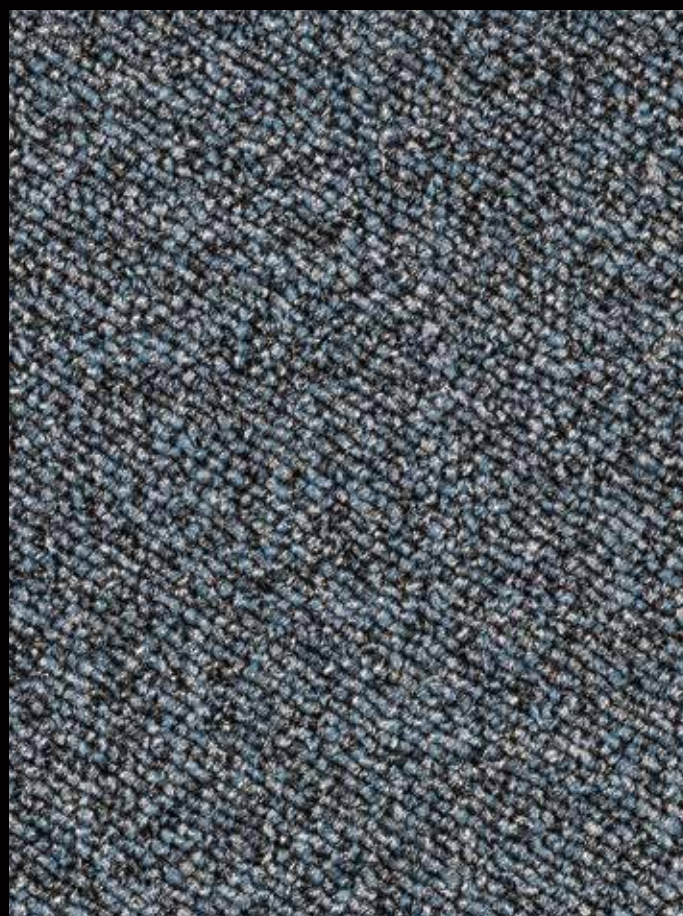
MAXIMA

50cm
50cm

TILE



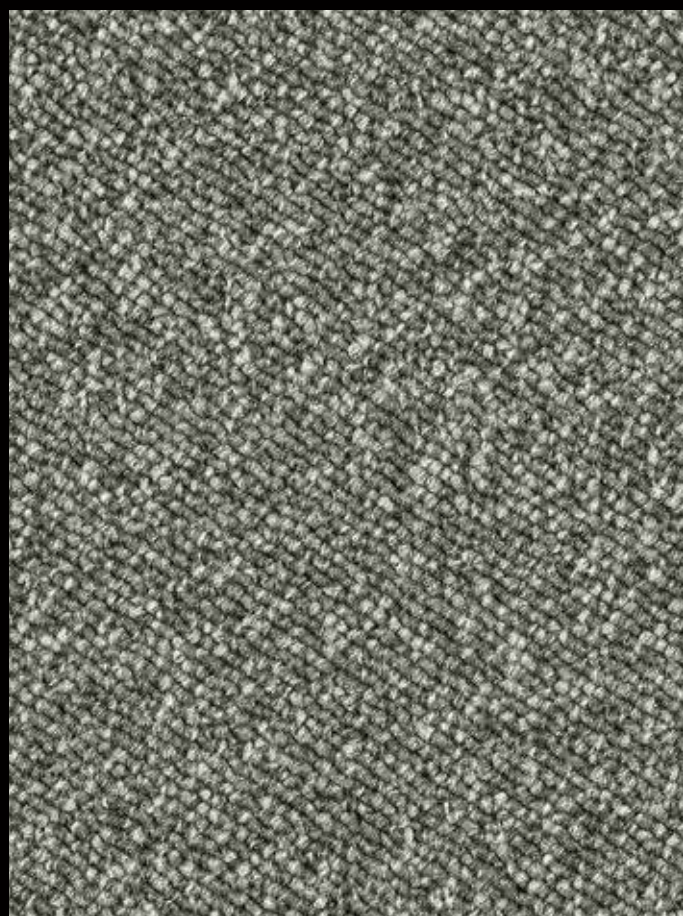
MAXIMA 45 Chocolate



MAXIMA 97 Basalt



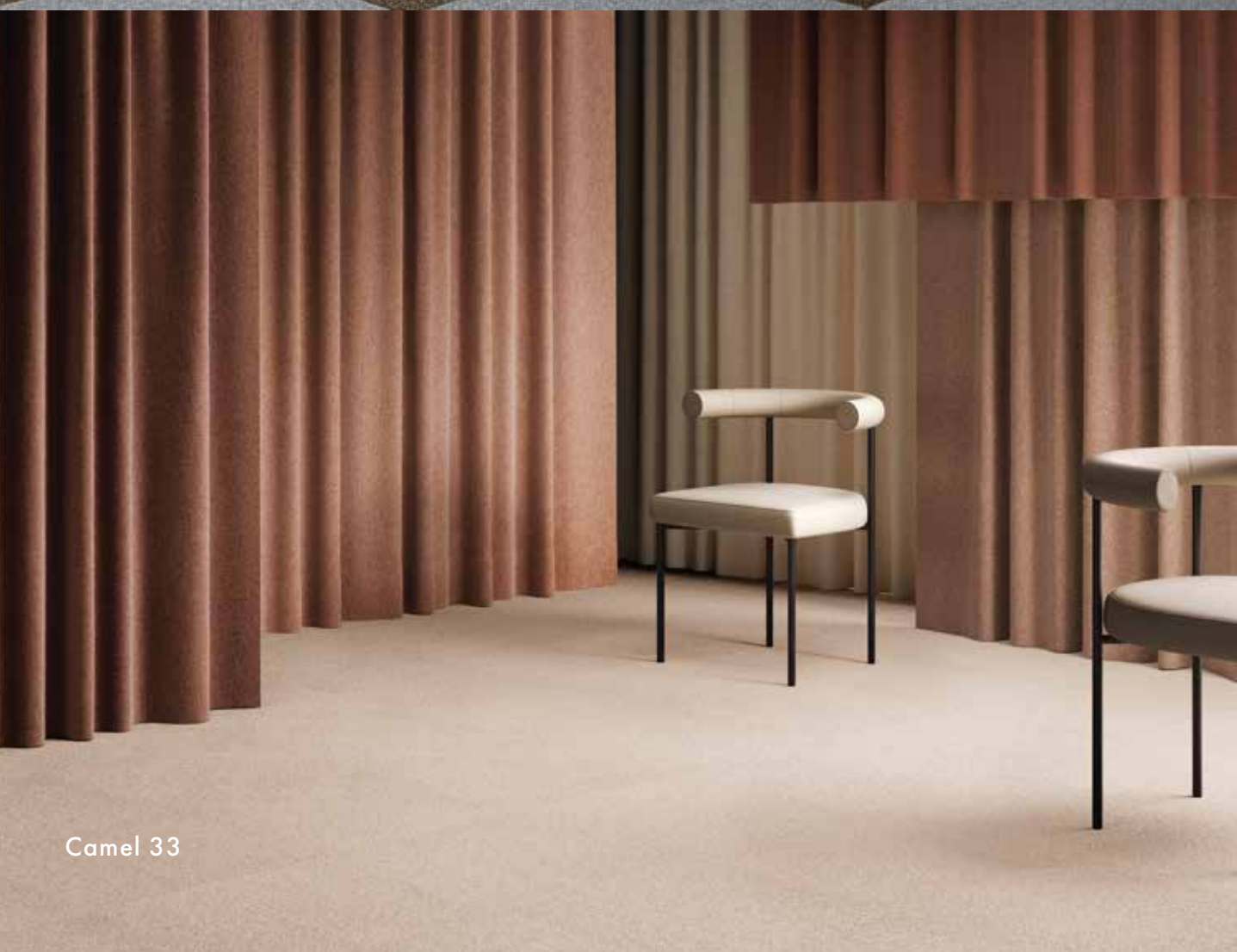
MAXIMA 99 Anthracite



MAXIMA 94 Smoke

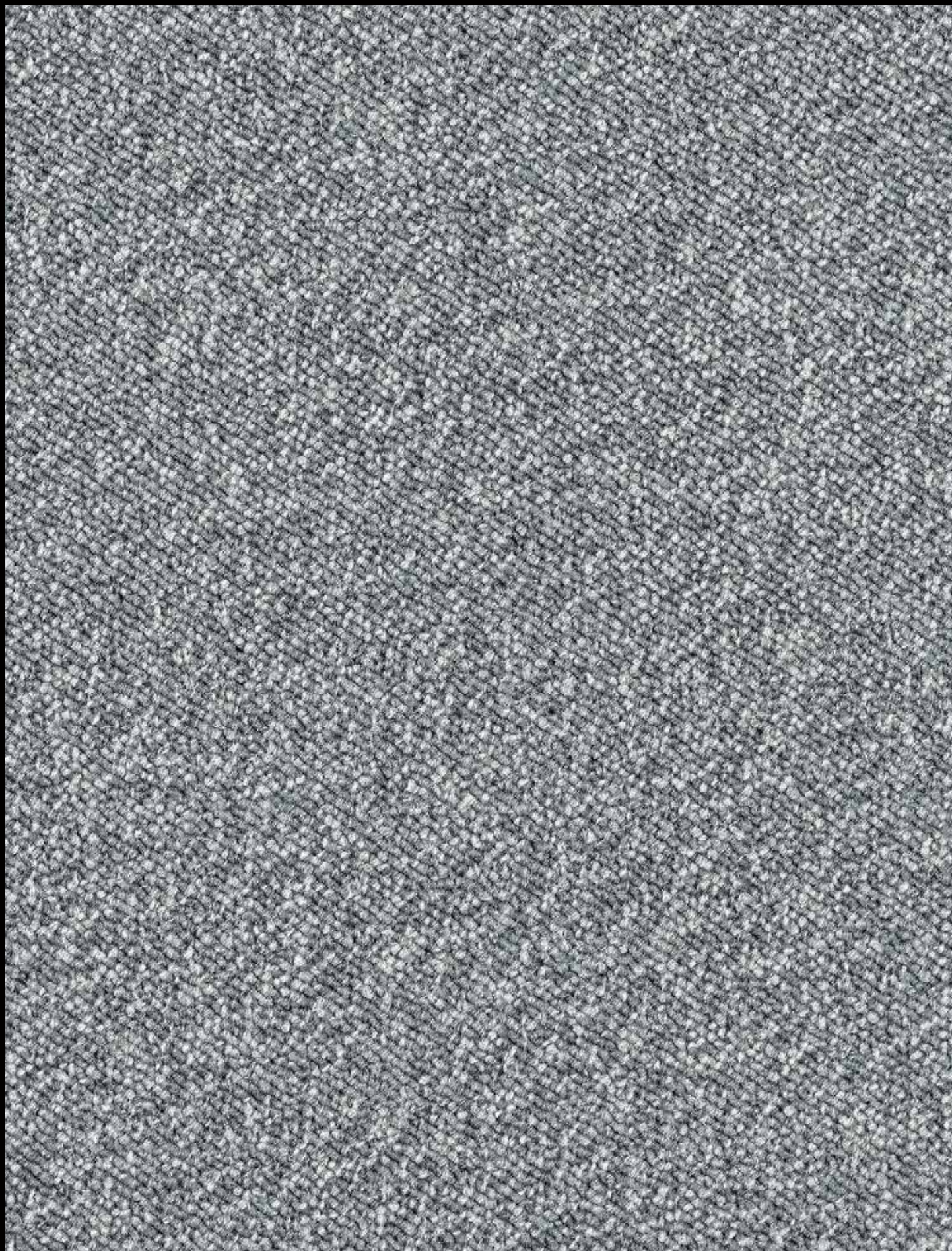


Chocolat 45
Granite 90



Camel 33

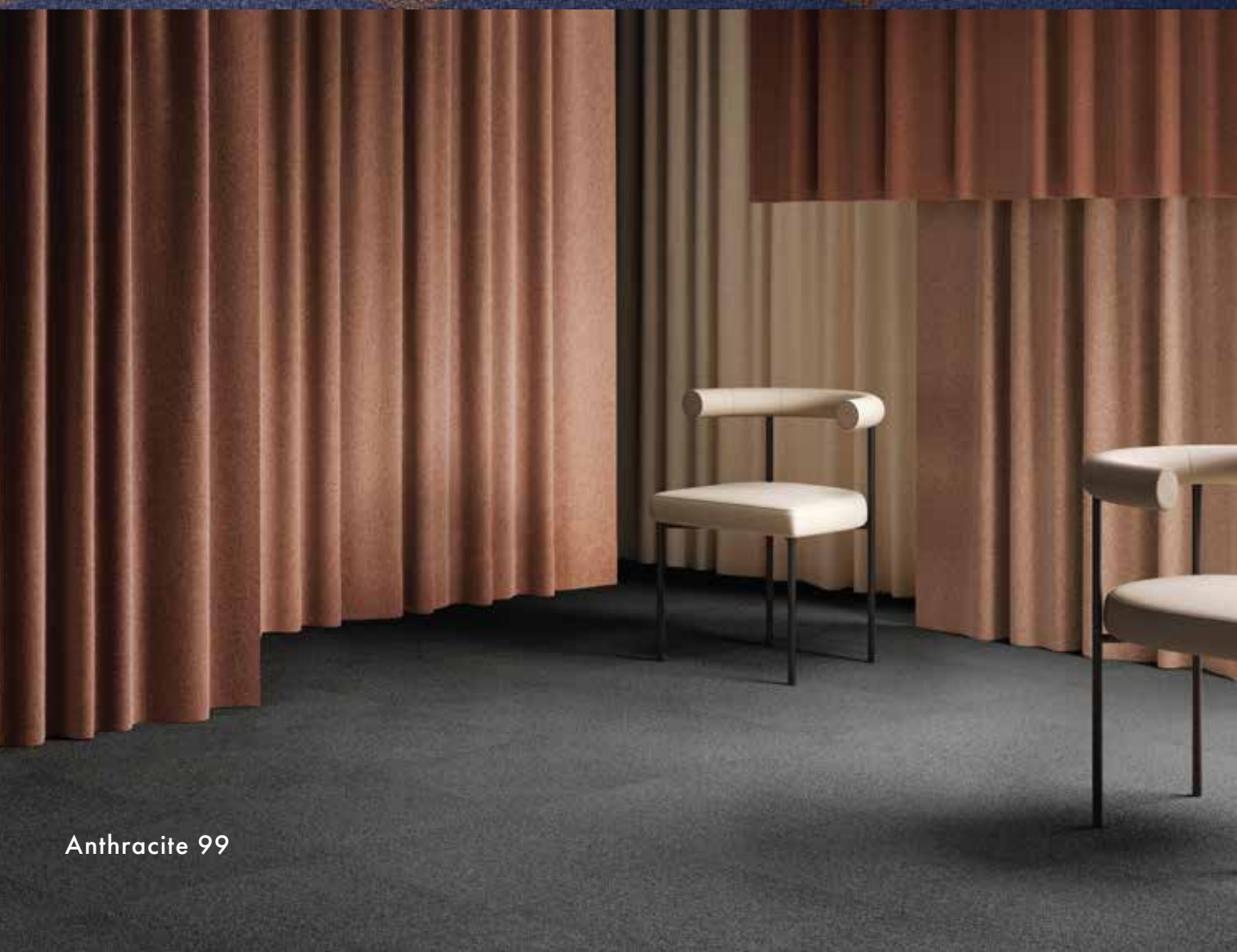
MAXIMA



MAXIMA 90 Granite

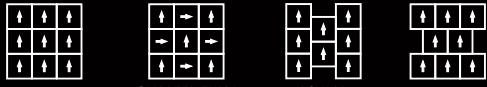


Mocca 40
Royale 78



Anthracite 99

MAXIMA

Type of manufacture (carpet tile) Art der Herstellung (Teppichfliese) Methode de fabrication (dalle de moquette)	ISO 2424		1/10 Loop Pile (tufted)
Dimensions Abmessungen Dimensions	EN ISO 24342	cm	50cm x 50cm (20 tiles/box)
Primary backing Trägermaterial Premier dossier	ISO 2424		Polyester non-woven
Secondary backing Rückenausrüstung Envers sous-couche	ISO 2424		Bitumen
Pile fibre composition Faserzusammensetzung der Nutzschrift Composition du velours	ISO 2424		iMax®100% Solution Dyed Nylon (SDN)
Total thickness Gesamtdicke Épaisseur totale	ISO 1765	mm	5,6
Effective pile thickness Polschichtdicke Épaisseur du velours	ISO 1766	mm	2,6
Total mass Gesamtgewicht Masse surfacique totale	ISO 8543	g/m ²	4.015
Total pile mass Poleinsatzgewicht Masse surfacique de velours totale	ISO 2424	g/m ²	520
Effective pile mass Polschichtgewicht Masse surfacique de velours utile	ISO 8543	g/m ²	340
Pile density Pol-Rohdichte Densité du velours	ISO 8543	g/cm ³	0,131
Number of tufts Noppenzahl Nombre de touffes	ISO 1763	/dm ²	1.810
Static electrical propensity Begehtest Test du marcheur	ISO 6356	kV	≤ 2
Use classification Beanspruchungsbereich Classement d'usage	EN 1307		33 Contract use - Heavy 33 Objektbereich - Extrem 33 Professionnel - Intensive
Luxury rating Komfortklasse Classement de confort	EN 1307		LC1
Thermal resistance Wärmedurchlaßwiderstand Résistance thermique	ISO 8302	m ² .K/W	0,09
Dimensional stability Dimensionsstabilität Stabilité dimensionnelle	EN 986	%	≤ 0,20
Flammability Brennverhalten Tenue au feu	EN 13501-1		BF1 - s1 Loose laid (2020/211-1)
Prodis - GUT	www.pro-dis.info		127826
DOP			1008#IL0011
Laying direction Verlegerichtung Sens de pose			 MONOLITHIC QUARTER TURN ASHLAR BRICK

