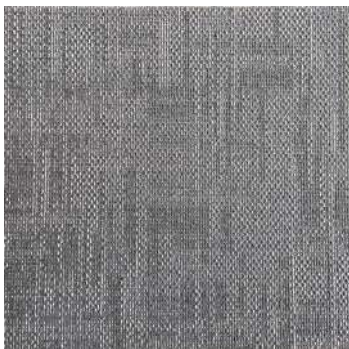


Matrix 7633 Teal Green



Matrix 7606 Glacier Grey



Matrix 7632 Denim Blue



Matrix 7605 Metal Grey



SPECIFICATION

Product Name	:	Matrix
Construction	:	Tufted Structured Loop
Pile Fiber	:	SDN 6
Yarn	:	1200 x 2
Machine Gauge	:	1/12 th Infinity
Stitch Rate /10cm	:	37.4 (+/-5%)
Pile Weight	:	540 grm/m ²
Total Weight	:	3585 gsm (+/-5%)
Pile Height	:	3.5 MM (+/-3%)
Total Thickness	:	6MM (+/-5%)
Total Density Factor	:	5500
Tile Size	:	50x50cm
Primary Backing Structure	:	Polyster non woven spun bounded
Secondary Backing Structure	:	PVC reinforced with Fiber glass scrim
Packing	:	20 Pcs in one box (5m ²)

PERFORMANCE SPECIFICATION

Soil Resistant Treatment	:	Soil Rating after vacuum - 1.0 & Soil Rating after Extraction- 2.5
Light Fastness	:	Exposure 40AFU, Rating 5
Flammability	:	Pass DOC FF 1-70
Anti Static Control	:	ANSI/ESD S 7.1 Protection of Electrostatic Discharge of Susceptible Items - Flooring Materials
Dimension Stability	:	Pass DIN 54318 (Edge Curl)
Colour fastness to crocking	:	Pass AATCC 165
Abrasion Resistance	:	Pass ASTM D3884
Acoustic Behaviour & Sound Absorption	:	Pass ASTM C423-2017
GBI / LEED Contribution	:	Leed V4 Gold certified
Indoor Air Quality	:	CRI Green Label Plus GLP100217



Ultraviolet resistance



Anti-Static



Reduced flammability



Wear resistance



Environmental



Long life-span



Dimensional stability



Anti-slip



Passed Various Tests

- As with all carpets, colors are subject to dye lot variations.
- Specifications are subject to nominal manufacturing variances material supply and/or manufacturing processes may necessitate specification changes without notice.