



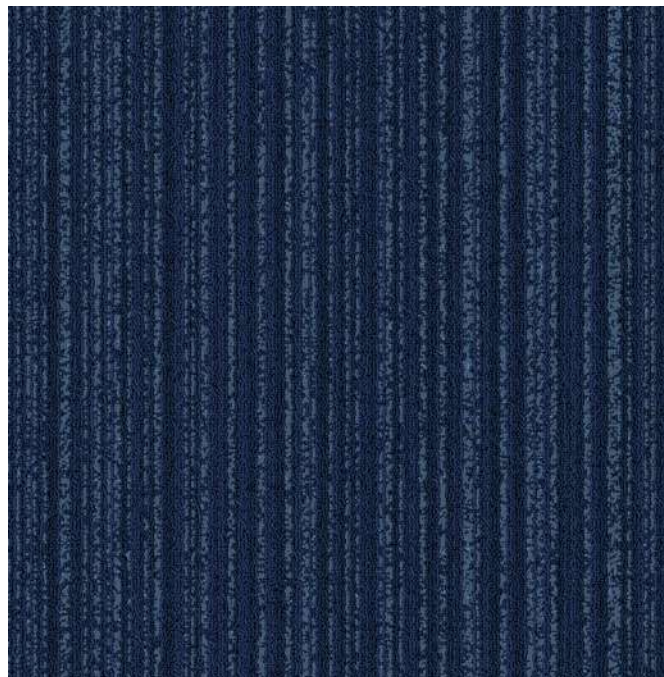
MAGNET

CARPET TILES

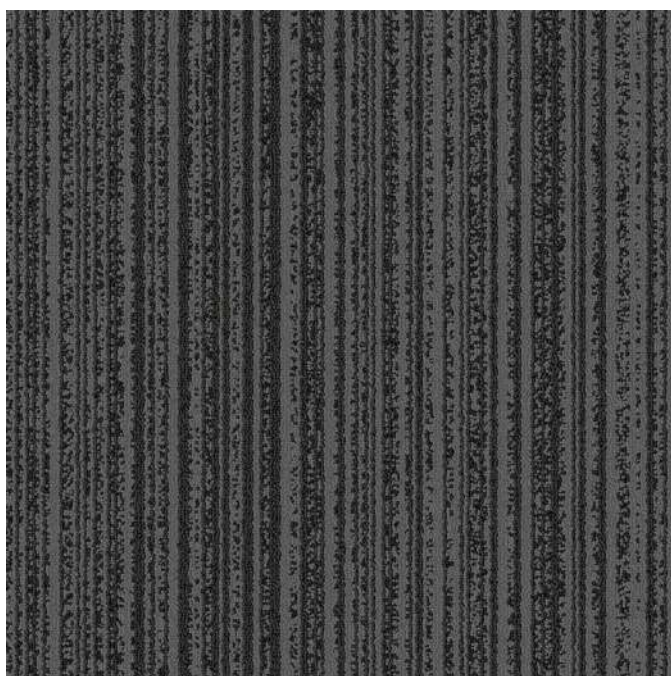
MAGNET



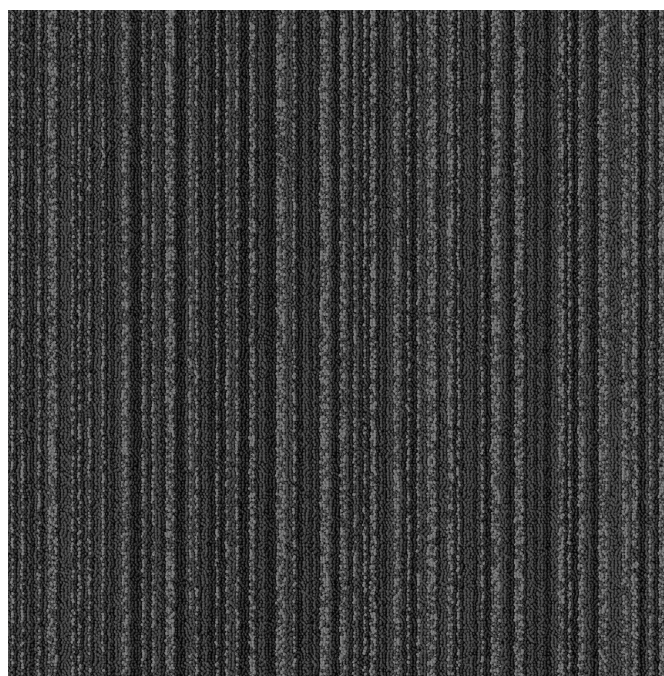
MAGNET 1645 JOHANNESBURG



MAGNET 1656 KIMBERLEY



MAGNET 1674 DURBAN



MAGNET 1675 CAPE TOWN

CARPET TILES

MAGNET

SPECIFICATIONS

STYLE NAME	:	MAGNET
CONSTRUCTION	:	LOOP
FIBER	:	100% OLEFIN
YARN TYPE	:	CABLE
DYE METHOD	:	SOLUTION DYED
GAUGE	:	1/10 TH
PILE HEIGHT	:	3.5 MM
TOTAL HEIGHT	:	5.5 MM
PILE WEIGHT	:	600 GM PER SQM ($\pm 5\%$)
NUMBER OF TUFTS	:	169420/M ²
PRIMARY BACKING	:	NON WOVEN
SECONDARY BACKING	:	STABLESHIELD- 100% VINYL
TILE SIZE	:	50 X 50 CM
PACKING	:	20 PCS (5M ²) PER BOX
INSTALLATION METHOD	:	QUARTER TURN

PERFORMANCE PARAMETERS

WEAR CLASSIFICATION	HEAVY CONTRACT	
VOC EMISSION	ASTM D5116-06	<0.5 mg/m ² /hour (CRI GLP)
FLAMMABILITY	ASTM D-2859//FF 1-70//16CFR 1630	Pass 8/8
CRITICAL RADIANT FLUX	ASTM E648-08	Class 1
STATIC PROPENSITY	ISO 6356	0.2 kV
COLOR FASTNESS	AATCC/16	5/5 on Grey Scale
THERMAL RESISTANCE	ISO 8302	.04m ² K/W
IMPACT SOUND INSULATION	ISO 140-8	ΔL_w 23dB
SOUND ABSORPTION LEVEL	EN ISO 11654	α_w : 0.15(H)
SOILING PROPENSITY	ASTM D 6540-00	4
DIMENSIONAL STABILITY	EN 986	< 0.20%
CASTOR CHAIR TEST	DIN 54324	R \geq 2.4
SMOKE DENSITY	EN ISO 9239-1:2002	<450

