



IMPULSE CARPET TILES



90 LIGHT RED



91 RED



81 LIGHT BROWN



82 BEIGE



83 GOLD



84 SKY BLUE



85 DARK BLUE



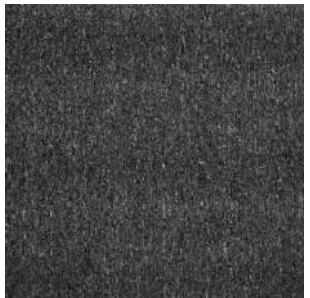
86 OCEAN BLUE



89 GREEN



87 LIGHT GREY



88 CHARCOAL GREY



SPECIFICATIONS

Product	:	IMPULSE
Fiber	:	100% Polypropylene
Manufacturing Process	:	Tufted, Loop Pile
Dye Method	:	Solution Dyed
Face (Pile) Carpet Gauge	:	1/10th
Pile Height	:	3.00 mm (\pm 0.2 mm)
Total Height	:	6.00 mm
Primary Backing	:	Non Woven
Pile Weight	:	500 gms/m ² (\pm 5%)
Total Weight	:	\pm 4000 gms/m ² (\pm 5%)
Secondary Backing	:	Glass Fiber Reinforced PVC Backing
Stitch Rate/Inch	:	11 (\pm 42/10 cms)
Recommended Installation	:	Quarter Turn
Size	:	50 x 50 cms

DISCLAIMERS

According to International Carpet Manufacturing norms colors may differ from dye lot to dye lot within tolerance. Please take note of the dye lot number on the cartons before installing.