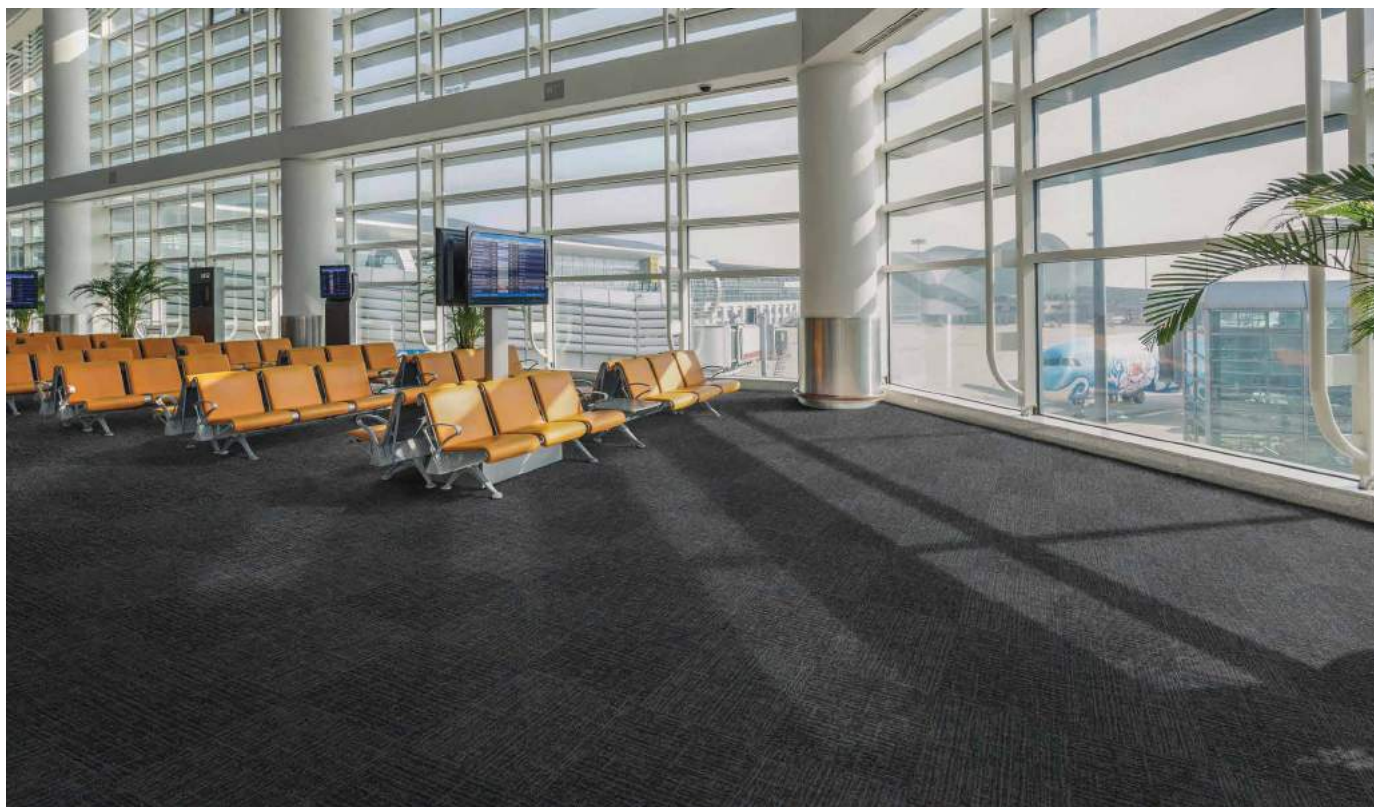






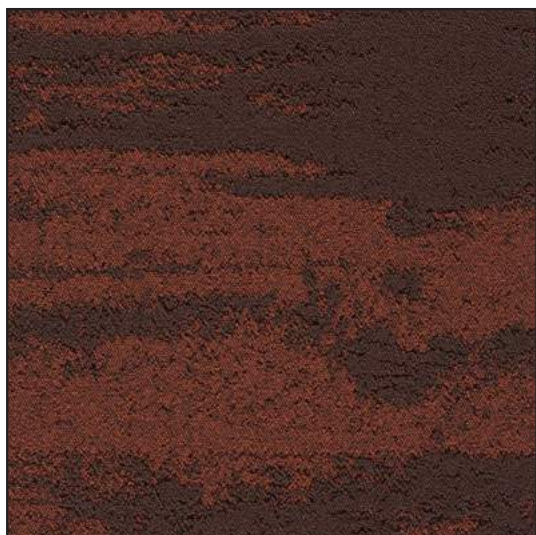
# NATURAL BARK



SHRUBS 010



KNOTS 009



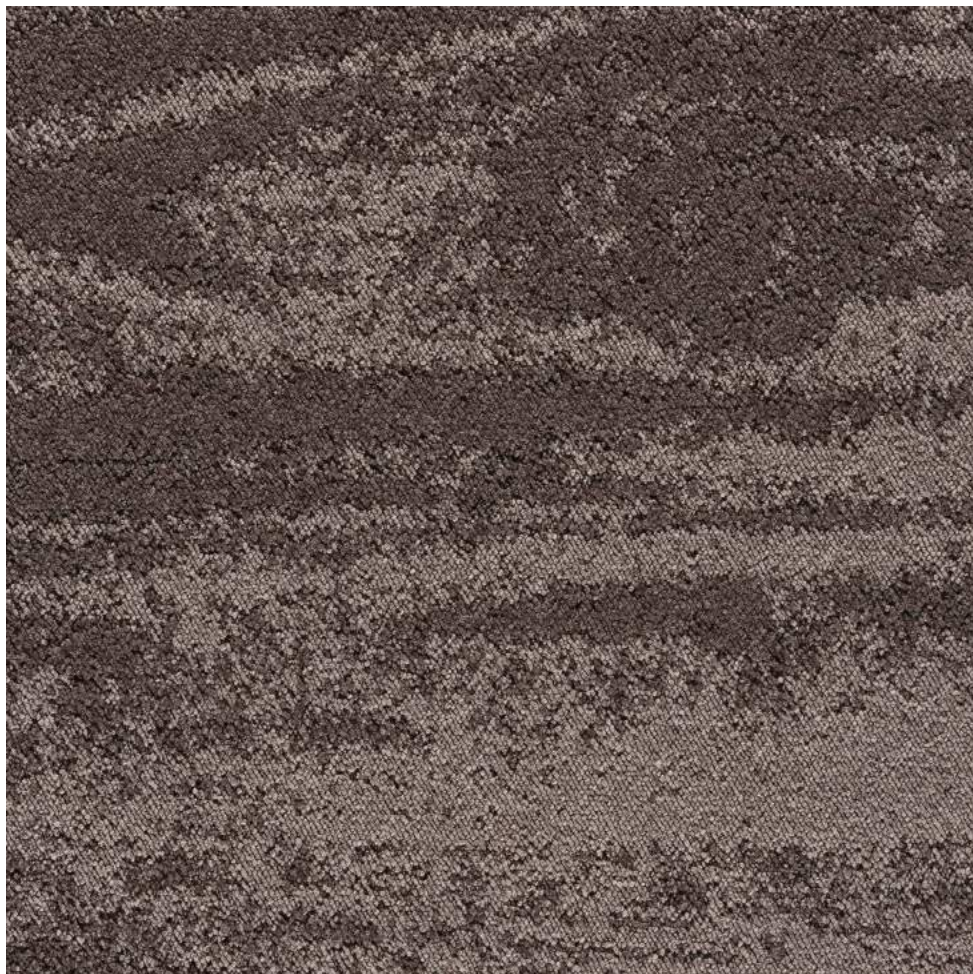
INFUSION BARK 008



TAN BARK 005



# NATURAL BARK



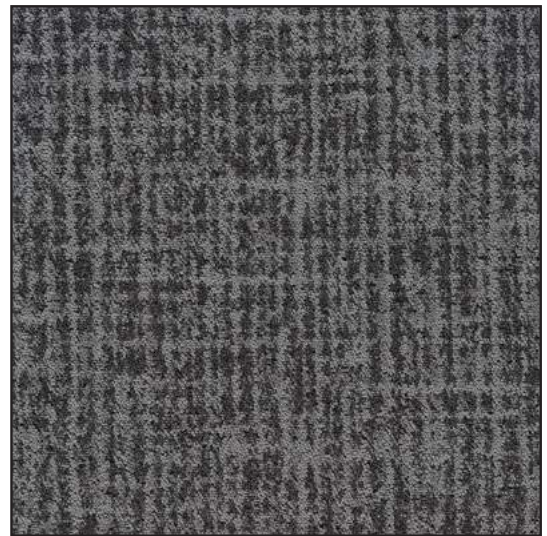
PETRIFIED WOOD 002



# TORRENTIAL RAIN



OCEAN FEVER 009



ICE AGE 006



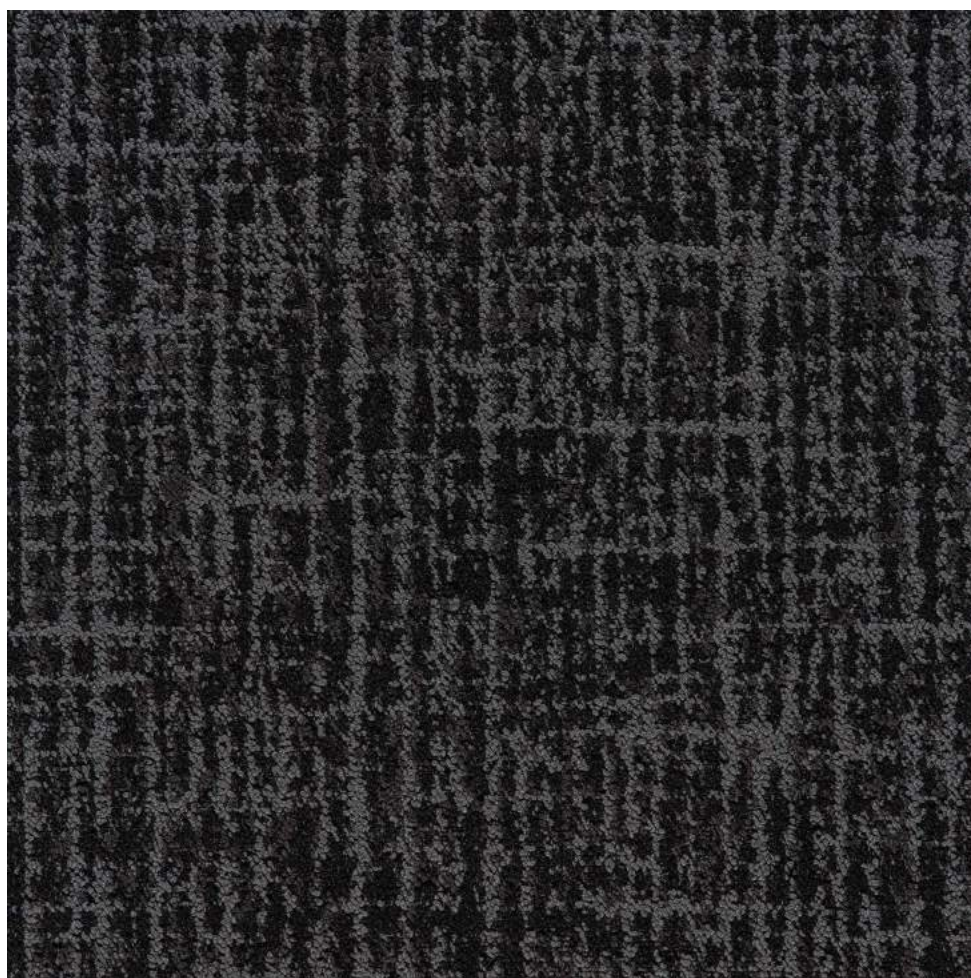
MONSOON 008



DRIZZLE 002



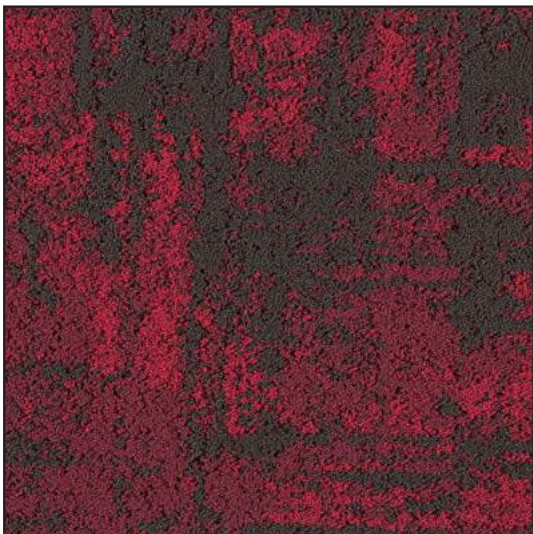
# TORRENTIAL RAIN



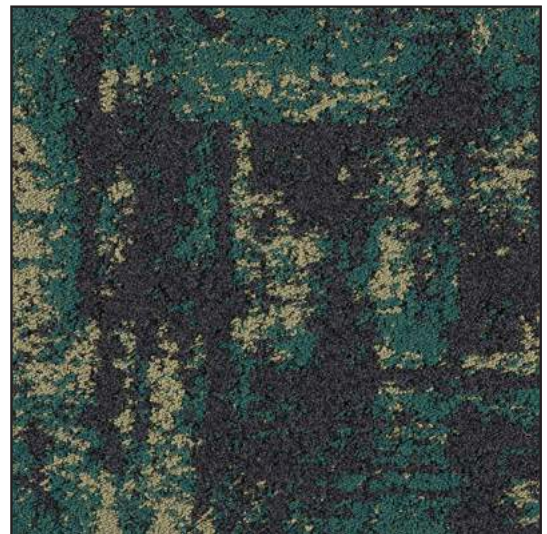
WICKED RAIN 011



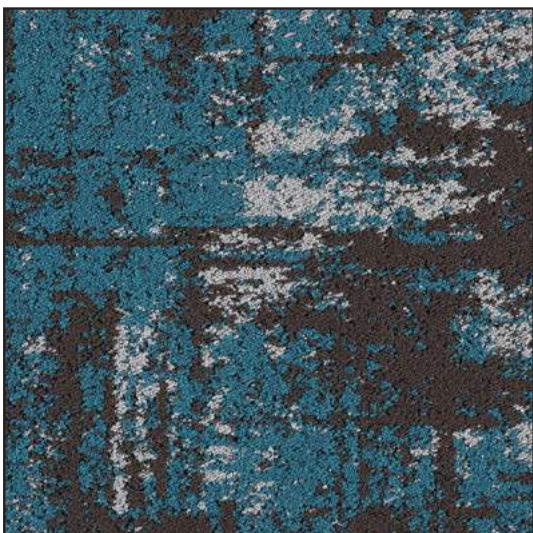
# EARTH ROCK



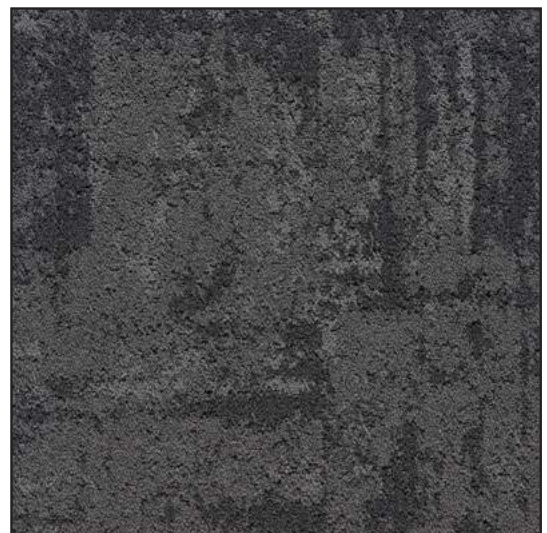
BLOCKS 001



MYLONITE 004



VESICULAR 007



STONEHENGE 009



# EARTH ROCK



ROSETTA STONE 002



PLYMOUTH ROCK 003





## THE BENEFITS OF EOS BAC:

Belgotex Floors introduces EOS BAC, the new secondary backing system developed to address sound absorption in office spaces and still be environmentally-friendly. The backing is applied as a secondary layer and boasts a host of other benefits:

### IMPROVED SOUND ABSORPTION

Sound wave reflection is reduced when sound energy is absorbed into the three-dimensional structure of carpet. With the addition of EOS Bac, sound absorption is reduced considerably further by 40% in the sensitive speech frequencies.

### IMPACT SOUND REDUCTION

EOS Bac forms a cushion and creates a sound barrier between the building structure and the office interior making for a quieter environment.

### UNDERFOOT COMFORT

With the cushioning effect of EOS Bac, the impact of footfalls is absorbed by the carpet tile to reduce joint and leg muscle fatigue. This makes for a more comfortable and healthier work environment.

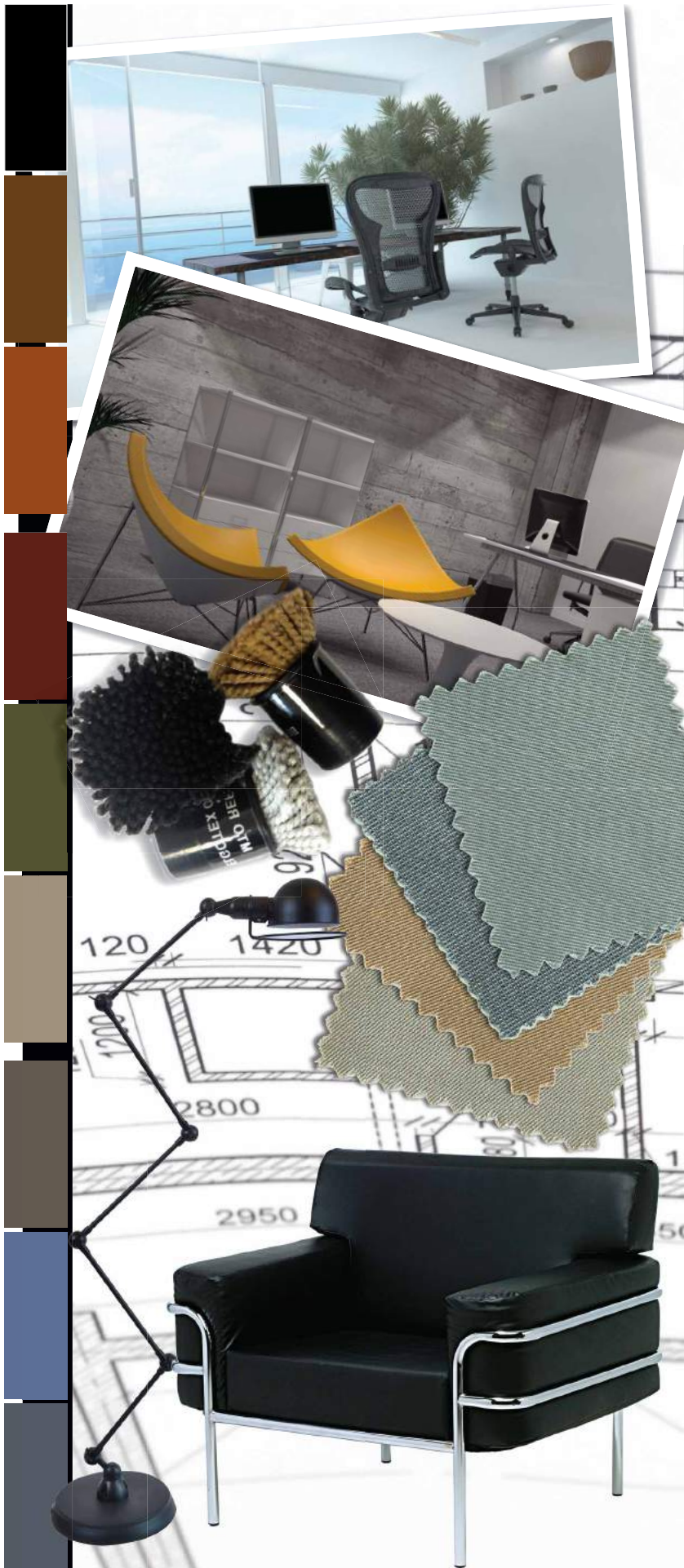
### DURABILITY

EOS Bac is manufactured to withstand the most demanding applications, adding long-term durability and strength to carpet tiles.

### HIGHER RECYCLED CONTENT

EOS Bac has a high recycled content and is manufactured from recycled PET post consumer bottle waste. This helps to create a safer and sustained environment.





## LIGHT REFLECTANCE VALUE

### What is Light Reflectance Value?

Light Reflectance Value (LRV) is the total quantity of visible light reflected by a surface, e.g. floorings, ceilings, walls and furniture, at the wavelengths and directions when illuminated by a light source.

The LRV scale runs from 0, which is a perfectly absorbing surface that could be assumed to be totally black, up to 100, which is a perfectly reflective surface that could be considered to be the perfect white. Because of practical influences in any application, black is always greater than 0 and white never equals 100. Additional to colour, the structure and gloss of the product or surface are determining factors of LRV.

The LRV value is directly measured according to the British Standard 8493:2008 "Light Reflectance Value (LRV) of a surface". The LRV is represented by the Y value on our sampling and is a % value. The L\* value is the colour depth and is used to calculate the visual contrast but should not be mixed up with the LRV (Y value) as it is significantly higher. However, the L\*-value can be used to calculate the LRV (Y value) of a surface, as a close approximation if the directly measured LRV according to BS 8493.

### Note:

It is important to take into account that the installation of a floor covering with a high LRV (Y value), >15%, will require the implementation of a specifically adapted maintenance schedule in order to guarantee a satisfactory visual appearance for the product.

### LIGHT REFLECTANCE VALUE

#### EARTH ROCK

Stonehenge 009	L : 34.76, Y : 8.38
Rosetta Stone 002	L : 31.09, Y : 6.69
Vesicular 007	L : 29.30, Y : 5.96
Blocks 001	L : 21.61, Y : 3.41
Mylonite 004	L : 26.53, Y : 4.93
Plymouth Rock 003	L : 21.32, Y : 3.33

#### NATURAL BARK

Shrubs 010	L : 29.55, Y : 6.05
Knots 009	L : 28.71, Y : 5.73
Infusion Bark 008	L : 22.47, Y : 3.65
Tan Bark 005	L : 17.44, Y : 2.40
Petrified Wood 002	L : 29.77, Y : 6.14

#### TORRENTIAL RAIN

Ocean Fever 009	L : 51.60, Y : 19.79
Ice Age 006	L : 42.40, Y : 12.76
Wicked Rain 011	L : 22.33, Y : 3.61
Monsoon 008	L : 27.18, Y : 5.16
Drizzle 002	L : 36.02, Y : 9.02



# The Forces

## COLLECTION

### EARTH ROCK

CONSTRUCTION	Tufted Colour Placement •
FIBRE TYPE	Stainproof SDX (Solution Dyed Nylon)
RECYCLED CONTENT	Yes - Colour & Backing Dependent
USE CLASSIFICATION	Heavy Commercial
PILE HEIGHT	2.5mm to 6mm (± 0.5mm)
TOTAL THICKNESS	9mm (± 0.5mm)
PILE WEIGHT	810 g/m <sup>2</sup>
TOTAL WEIGHT	± 4910g/m <sup>2</sup> **
STANDARD SIZING	50cm x 50cm***
MACHINE GAUGE	1/10"
STITCHES/10cm	36
CUSHION BACKING	EOS BAC (Eco Only Secondary Backing System)
FIRE RATING	B <sub>fl</sub> -s1
COLOUR FASTNESS TO:	
i) Light	7 (ISO 105 – B02)
ii) Rubbing	(a) Wet 4-5 (ISO 105 - X12)
Rubbing	(b) Dry 4-5 (ISO 105 - X12)
iii) Water	4-5 (ISO 105 – E01)
ELECTROSTATIC PROPENSITY	Less than 2.0 kV (ISO 6356 & EN 1307)
STATIC CONTROL	Permanent
VOC TESTED	Pass

### TORRENTIAL RAIN

CONSTRUCTION	Tufted Colour Placement •
FIBRE TYPE	Stainproof SDX (Solution Dyed Nylon)
RECYCLED CONTENT	Yes - Colour & Backing Dependent
USE CLASSIFICATION	Heavy Commercial
PILE HEIGHT	2.5mm to 5.5mm (± 0.5mm)
TOTAL THICKNESS	9mm (± 0.5mm)
PILE WEIGHT	810 g/m <sup>2</sup>
TOTAL WEIGHT	± 4910g/m <sup>2</sup> **
STANDARD SIZING	50cm x 50cm***
MACHINE GAUGE	1/10"
STITCHES/10cm	36
CUSHION BACKING	EOS BAC (Eco Only Secondary Backing System)
FIRE RATING	B <sub>fl</sub> -s1
COLOUR FASTNESS TO:	
i) Light	7 (ISO 105 – B02)
ii) Rubbing	(a) Wet 4-5 (ISO 105 - X12)
Rubbing	(b) Dry 4-5 (ISO 105 - X12)
iii) Water	4-5 (ISO 105 – E01)
ELECTROSTATIC PROPENSITY	Less than 2.0 kV (ISO 6356 & EN 1307)
STATIC CONTROL	Permanent
VOC TESTED	Pass

Carpet protector mats are necessary where castor wheels are used.

### NATURAL BARK

CONSTRUCTION	Tufted Colour Placement •
FIBRE TYPE	Stainproof SDX (Solution Dyed Nylon)
RECYCLED CONTENT	Yes - Colour & Backing Dependent
USE CLASSIFICATION	Heavy Commercial
PILE HEIGHT	2.5mm to 6mm (± 0.5mm)
TOTAL THICKNESS	9mm (± 0.5mm)
PILE WEIGHT	810 g/m <sup>2</sup>
TOTAL WEIGHT	± 4910g/m <sup>2</sup> **
STANDARD SIZING	50cm x 50cm***
MACHINE GAUGE	1/10"
STITCHES/10cm	36
CUSHION BACKING	EOS BAC (Eco Only Secondary Backing System)
FIRE RATING	B <sub>fl</sub> -s1
COLOUR FASTNESS TO:	
i) Light	7 (ISO 105 – B02)
ii) Rubbing	(a) Wet 4-5 (ISO 105 - X12)
Rubbing	(b) Dry 4-5 (ISO 105 - X12)
iii) Water	4-5 (ISO 105 – E01)
ELECTROSTATIC PROPENSITY	Less than 2.0 kV (ISO 6356 & EN 1307)
STATIC CONTROL	Permanent
VOC TESTED	Pass

**BELGOTEX CERTIFIED PRODUCTS ARE ELIGIBLE TO ACHIEVE 100% AVAILABLE CREDITS RELEVANT TO ALL GREEN BUILDING RATING TOOLS, SUCH AS LEED v4**

\* Please take note that tile/plank joints will be visible due to the use of advanced tufting equipment and being able to create extreme pile height differences creating the required design complementing the texture of the final product. Pile settling will occur at the tile/plank joints during use after installation.



Made in South Africa from local and imported materials.



For more details see [www.belgotexfloors.co.za](http://www.belgotexfloors.co.za)

