

THE MOUNTAIN  
HAS A MAJESTIC STYLE  
**YET MAINTAINS**  
**A SIMPLE CHARACTER**





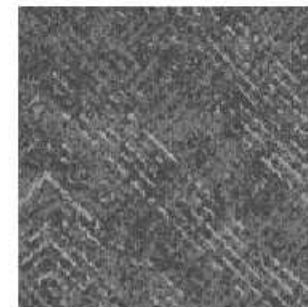




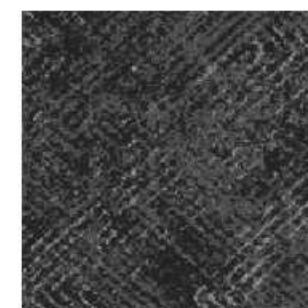
## EARTH SERIES



Earth 1



Earth 2

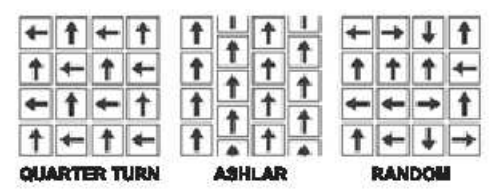
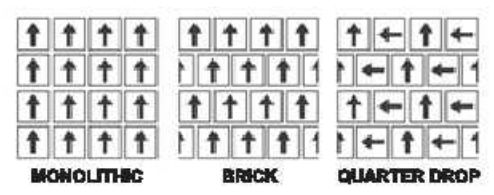


Earth 3



Earth 4

### INSTALLATION METHODS



Style Name :	Earth
Construction :	Multi - Level loop
Yarn :	100% Nylon Air - Entangled
Color System :	100% Solution Dyed
Gauge :	1/12
Stitches :	10 per inch
Pile Weight :	22oz/yd <sup>2</sup> (750gsm)
Pile Height :	4.0mm - 5.0mm (±0.5mm)
Backing :	PVC with fiberglass
Tile Size :	50cm x 50cm
Area of Use :	Heavy Commercial
Flammability :	Passes (ASTM648-10) Class I Passes (GB 8624 - 2012) B1
Smoke Density :	Passes ASTM E 662 Less than 450
Static Propensity :	Passes AATCC - 134 ≤ 3.5kv
Formaldehyde Purification :	Passes (JC/T 1074-2008) Class I



Earth 2

