



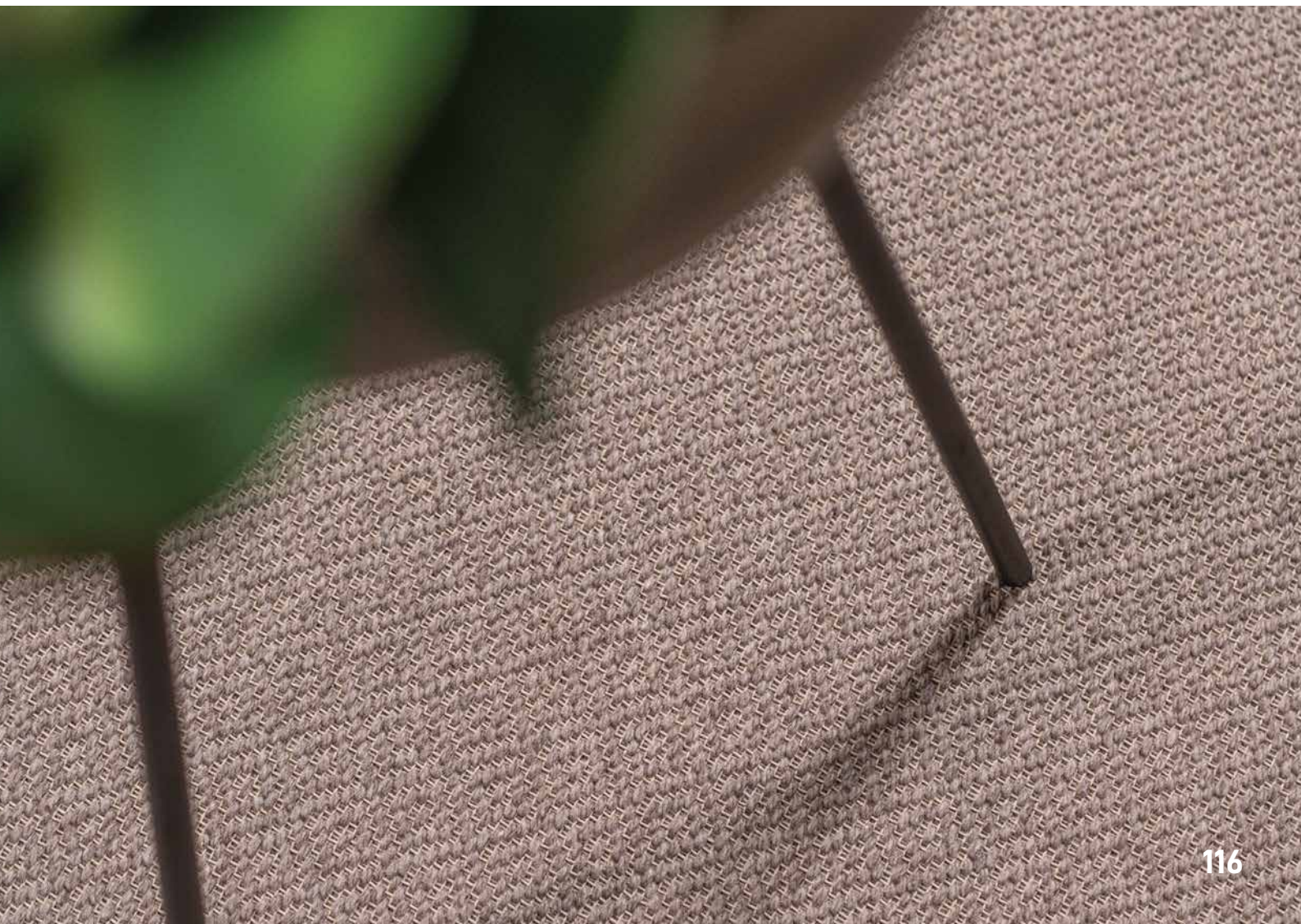
# Diamond







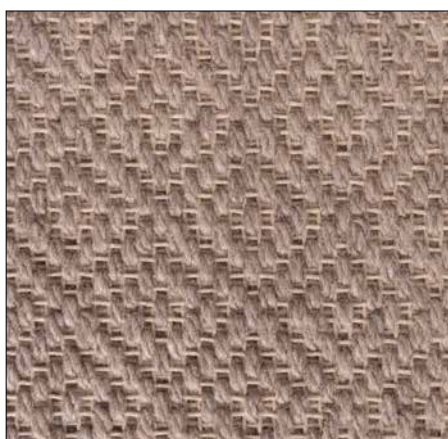
# Diamond



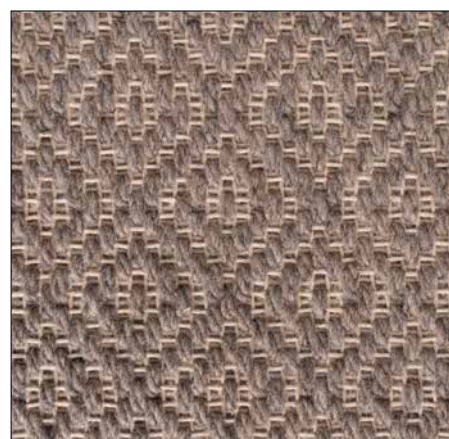
116



112



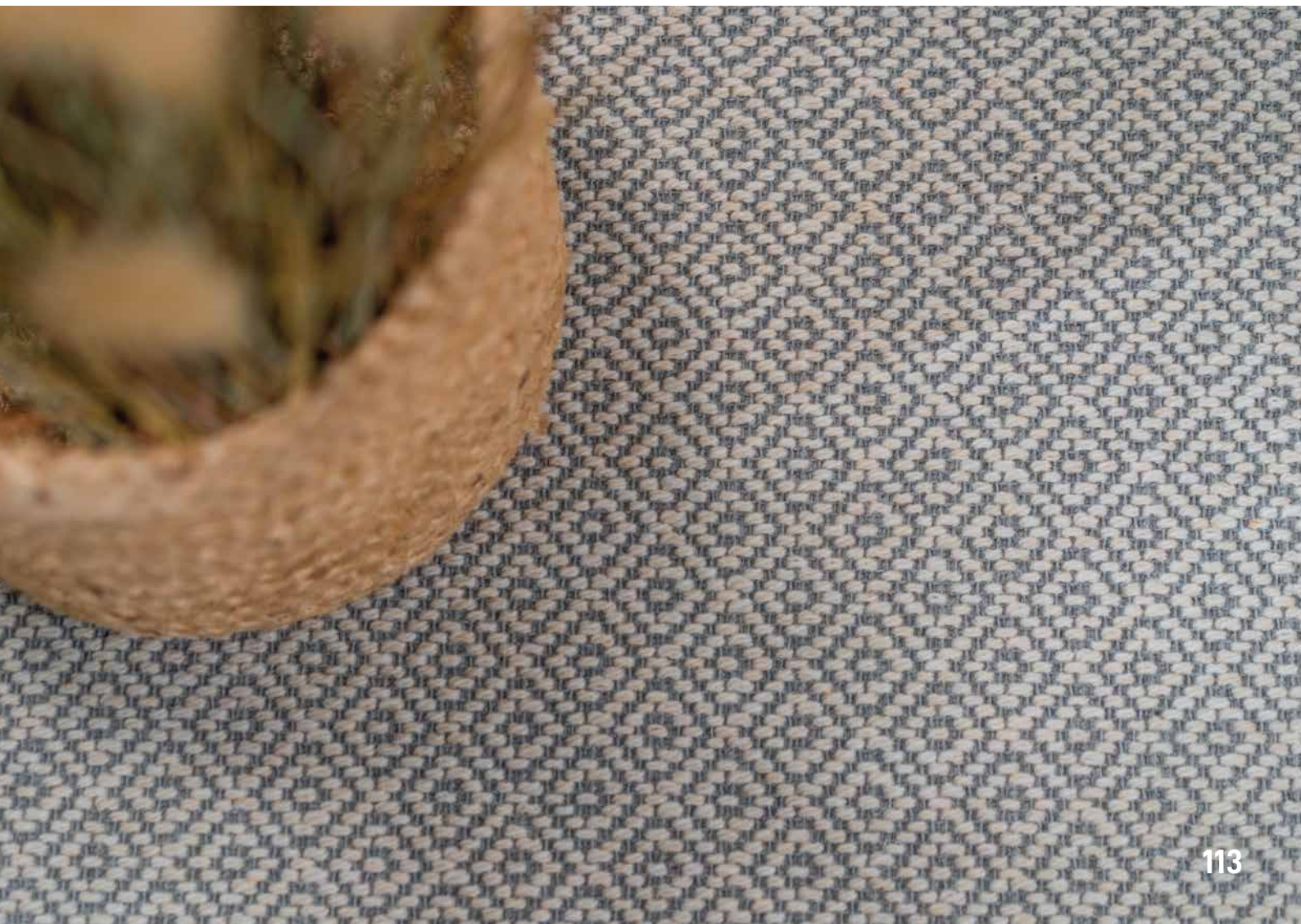
116



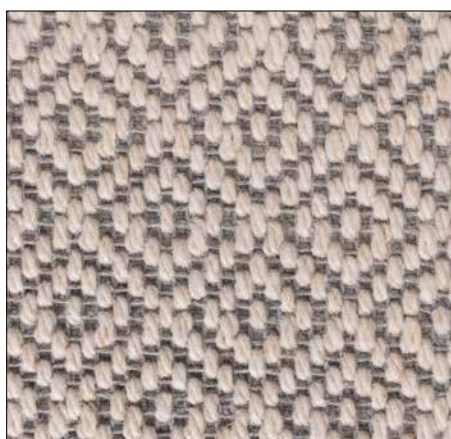
118







113



113



126



122







## SPECIFICATION

<b>Pile composition</b>	10% New Wool / 90 % PP		
<b>Primary Backing</b>	Woven		
<b>Secondary backing</b>	PP Fabric		
<b>Width</b>	400 cm	± 1%	
<b>Pile Weight</b>	550 gr / m2		ISO 8543
<b>Total weight</b>	1,925 gr / m2	± 15%	ISO 8543
<b>Pile height</b>	1,3 mm		ISO 1766
<b>Total Height</b>	6,7 mm		ISO 1765
<b>Fire Classification</b>	Dfl-S1		ISO 9239-1
<b>Use Area</b>	Heavy Domestic use (23) & Light Commercial use (31)		EN 1307
<b>Thermal resistance</b>	0,090 M2KW/ TOG 1,09		ISO 8302
<b>Light fastness</b>	≥ 5		105-B02
<b>Number of Loops</b>	18,228 /m2		ISO 1763
<b>Sound insulation</b>	10 dB		EN 1307

