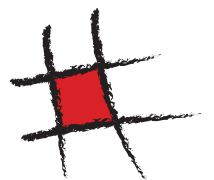




MADE IN
NETHERLANDS

Cormo





MADE IN
NETHERLANDS

Cormo



112



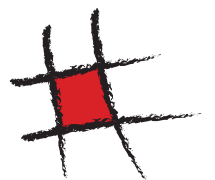
114



112

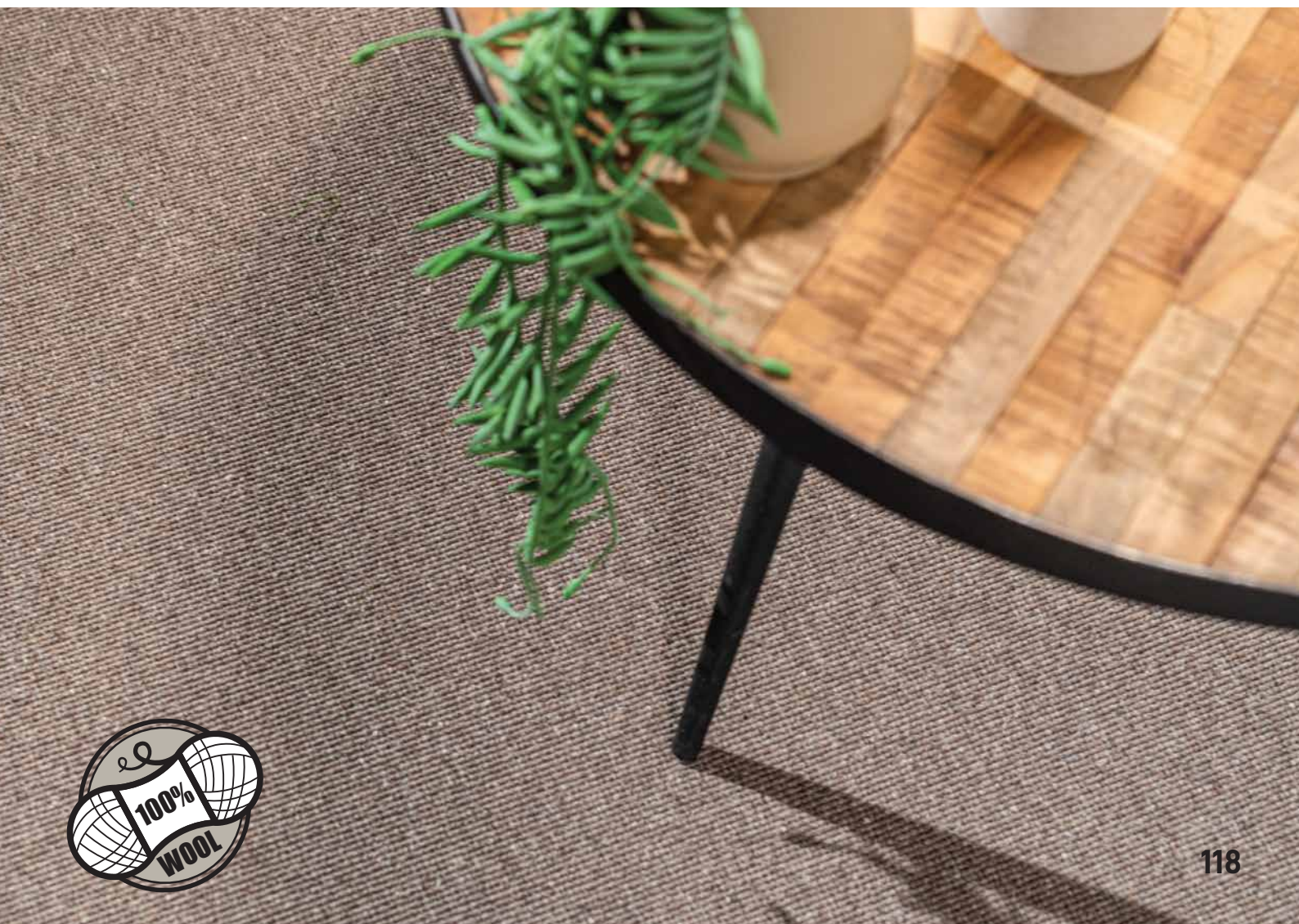


110





Cormo



118



118



117



122





MADE IN NETHERLANDS

Cormo



112

SPECIFICATION

Pile composition	100% Wool Loop Pile		
Primary Backing	Woven		
Secondary backing	PP Fabric		
Width	400 cm	± 1%	
Pile Weight	940 gr / m ²		ISO 8543
Total weight	2,000 gr / m ²	± 15%	ISO 8543
Pile height	1,4 mm		ISO 1766
Total Height	5,2 mm		ISO 1765
Fire Classification	Cfl-S1		ISO 9239-1
Use Area	Heavy Commercial use (33)		EN 1307
Thermal resistance	0,090 M2KW/ TOG 1,09		ISO 8302
Light fastness	≥ 4		105-B02
Number of Loops	96,000 /m ²		ISO 1763
Sound insulation	10 dB		EN 1307

