

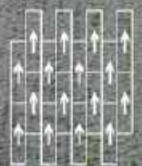


flors
The Flooring Solutions



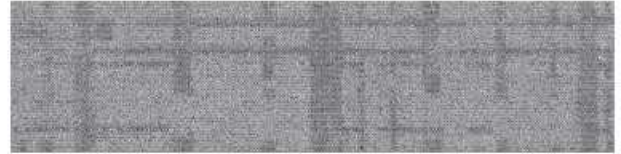
WESH







S C-MESH 224002



S C-MESH 224001



C-MESH 224021



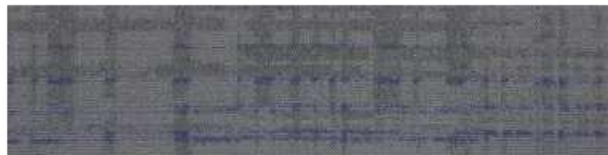
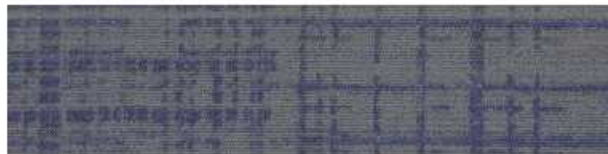
S C-MESH 224011



S C-MESH 224022



S C-MESH 224012



C-MESH 224003



C-MESH 224004



S C-MESH 224005

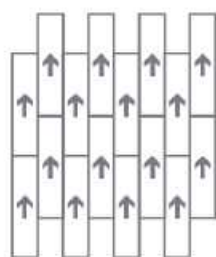
* S = Stock

Specification

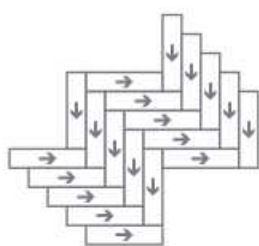
| | |
|----------------------------------|----------------------------|
| Product Name | C-MESH 224 |
| Product Code | C-MESH 224 |
| Tufted construction | Multi-Level loop |
| Fiber | 100% Nylon |
| Dye method | Solution Dyed |
| Gauge | 1/12 |
| Tufted weight(g/m ²) | 550±5% |
| Tile size(mm) | 250x1000.500x500.600x600 |
| Pile height(mm) | 4.0 ±0.5 |
| Total thickness(mm) | 6.5 ± 0.5 |
| Standard Backing | Glass fiber reinforced PVC |
| Flammability | GB8624-2012 B1(C) |
| Area of Use | Commercial- Heavy Duty |
| Antistatic performance | ISO 6356:2012≤2.0 kV |
| Dimensional Stability | QB/T 2755-2005≤0.2% |
| Colour Fastness | QB/T 2755-2005 ≥4-5 |
| Green Carpet(VOC) | CRI Green Label GLP100230 |



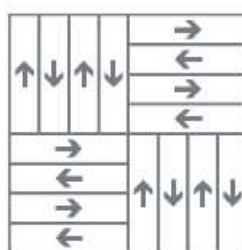
Recommended installation methods



Ashlar



Herringbone



Basketweave