

## 5 YEAR LIMITED WARRANTY

The warranty covers the product for wear, stain, fade and anti-static for the period quoted when fitted in accordance with the recommended industry guidelines for the installation and product usage. For further information on suitability please contact the company.

Carpet tiles installed on stairs are not covered by this warranty. Also this warranty is not binding against cuts, tears, burns, crushing, stains, odour, pulls, matting, soiling, damage due to floor installation, improper use. Damage due to non - protection, by walk - off mats or castor chair pads and cleaning by corrosive chemicals is also not covered by this warranty.

## TECHNICAL SPECIFICATION

Construction & Fiber:	Camifin PP / Multi Level Scroll
Gauge:	1/12"
Pile Height:	4-5 mm
Total Height:	7-8 mm
Pile Weight:	700 gsm
Total Weight:	5000 gsm
Backing:	PVC <small>reinforced by glass fiber</small>
Tile Size & Packing:	50x50 cm / 20 Pcs per Box (5 sqm) ± 5% tolerance

Product specifications are derived from averages resulting from normal manufacturing tolerances in yarn, fiber, temperature, humidity and may vary within normal industry tolerances. Performance is not affected by such variances.

As in all quality carpet tiles, colors are subject to dye lot variation. Shading is a result of pile direction, this is an inherent characteristic & therefore does not constitute a manufacturing defect. While every endeavor has been made to accurately reproduce colors, there may be minor variations in color of the actual product because of the nature of yarn dyes, weather at the time of dyeing and differences in display output due to lighting and digital photography and color settings and capabilities of monitors.

Backing or other materials may be changed without prior notice when shortages occur or when technological advancements provide for improvement of product performance.



Sound  
Insulation



Heat  
Insulation



Anti-static



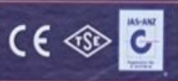
Colorfast



Wearproof



Anti-  
flammability



Bristol

Carpet Tiles

# Bristol



Actual product may differ from the images shown





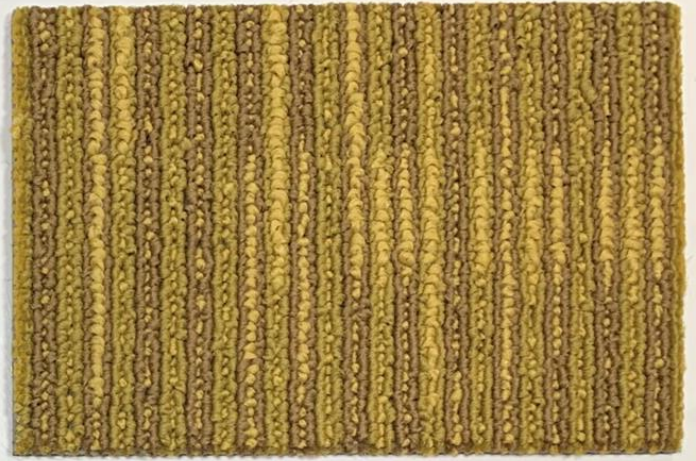
2511



2542

*Bristol*

*Xosetta*  
by *Woolmark*



2521



2522



