



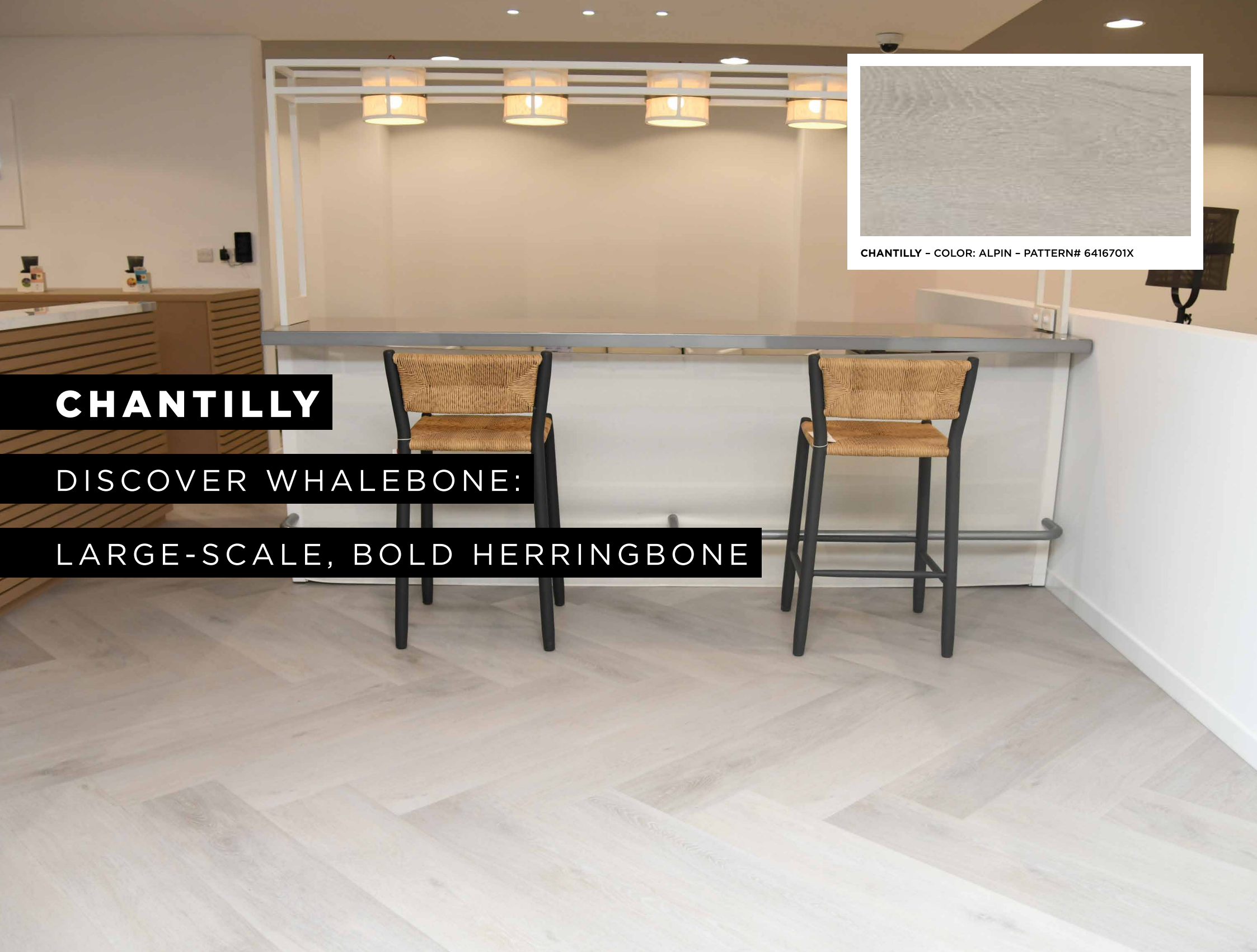
ASPECTA[™]

CONTOURS

Featuring  **ISOCORE** Technology™

A NEW DIMENSION IN FLOORING



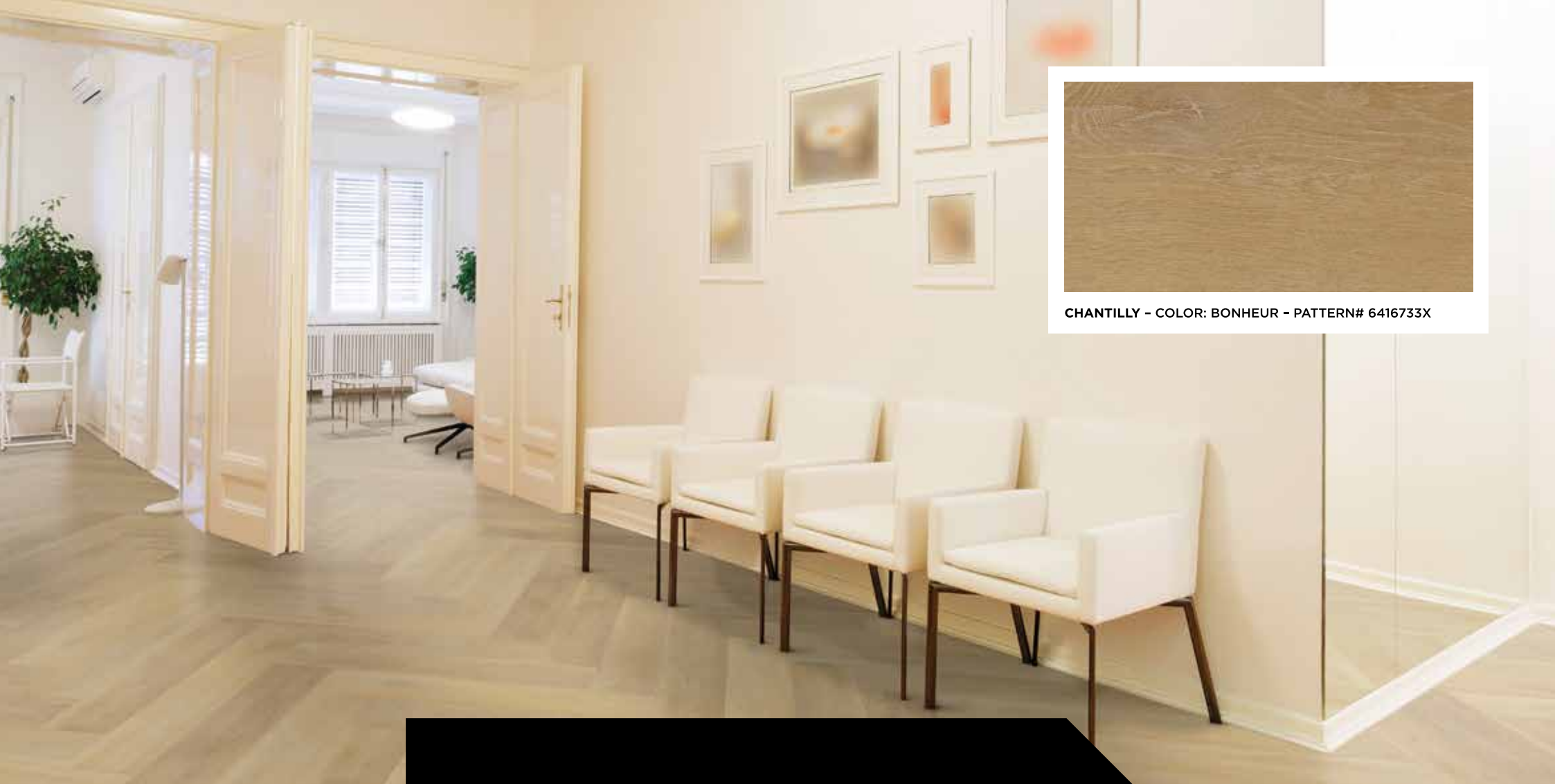


CHANTILLY - COLOR: ALPIN - PATTERN# 6416701X

CHANTILLY

DISCOVER WHALEBONE:

LARGE-SCALE, BOLD HERRINGBONE



CHANTILLY - COLOR: BONHEUR - PATTERN# 6416733X

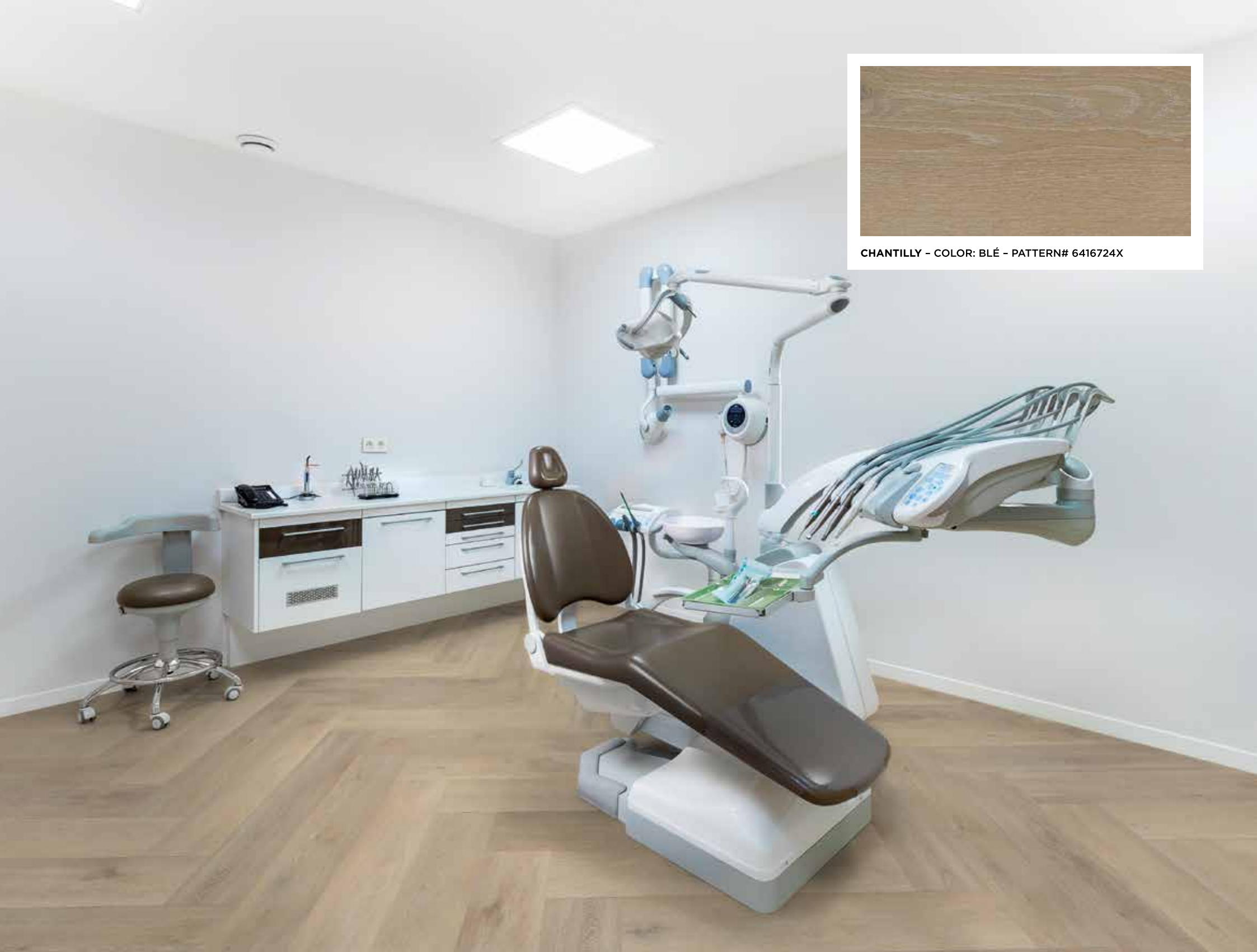
ASPECTA™ CONTOURS CHANTILLY

Chantilly, a whalebone single plank, plays with scale: a very bold, oversized interpretation of herringbone. It might be the most subtle and modern offering in the collection. The real surprise with Chantilly is its calming effect on a room because of its scale.





CHANTILLY - COLOR: RIVIÈRE - PATTERN# 6416731X



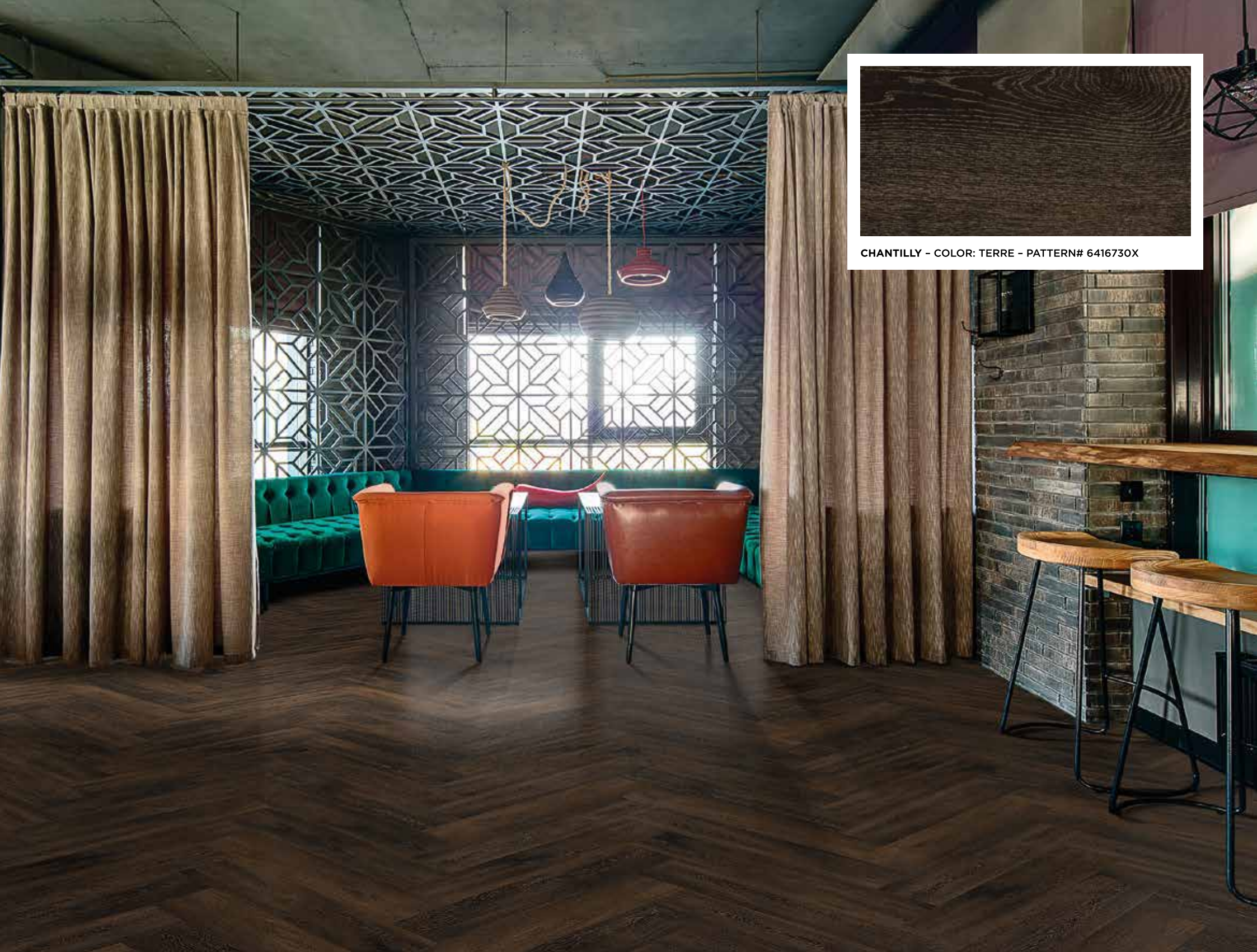
CHANTILLY - COLOR: BLÉ - PATTERN# 6416724X



CHANTILLY - COLOR: NATUREL - PATTERN# 6416739X



CHANTILLY - COLOR: AMBRE - PATTERN# 6416722X



CHANTILLY - COLOR: TERRE - PATTERN# 6416730X



CHANTILLY - COLOR: SOLEIL - PATTERN# 6416726X

OVERVIEW CHANTILLY

The DropLock 400 profile allows the attachment of the short ends of a plank to the long edge of a plank, to create that herringbone/whalebone pattern much like a glue-down product, but in a floating floor installation.



CHANTILLY - COLOR: NATUREL - PATTERN# 6416739X



CHANTILLY - COLOR: ALPIN - PATTERN# 6416701X



CHANTILLY - COLOR: BONHEUR - PATTERN# 6416733X



CHANTILLY - COLOR: AMBRE - PATTERN# 6416722X



CHANTILLY - COLOR: SOLEIL - PATTERN# 6416726X



CHANTILLY - COLOR: RIVIÈRE - PATTERN# 6416731X

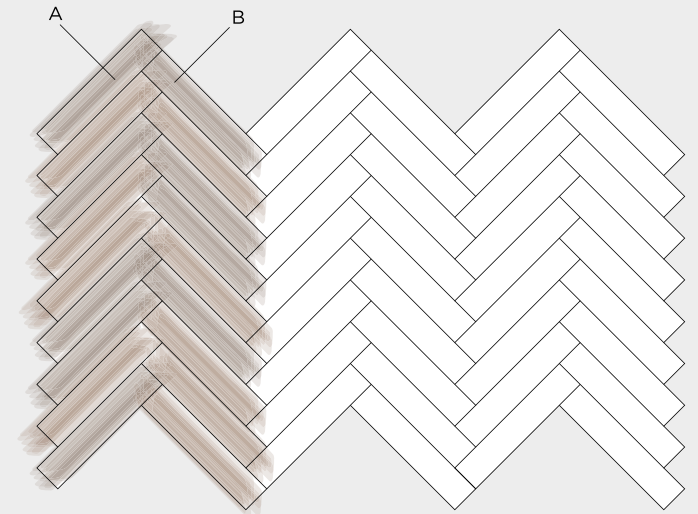


CHANTILLY - COLOR: BLÉ - PATTERN# 6416724X



CHANTILLY - COLOR: TERRE - PATTERN# 6416730X

CHANTILLY (WHALEBONE SINGLE PLANK)



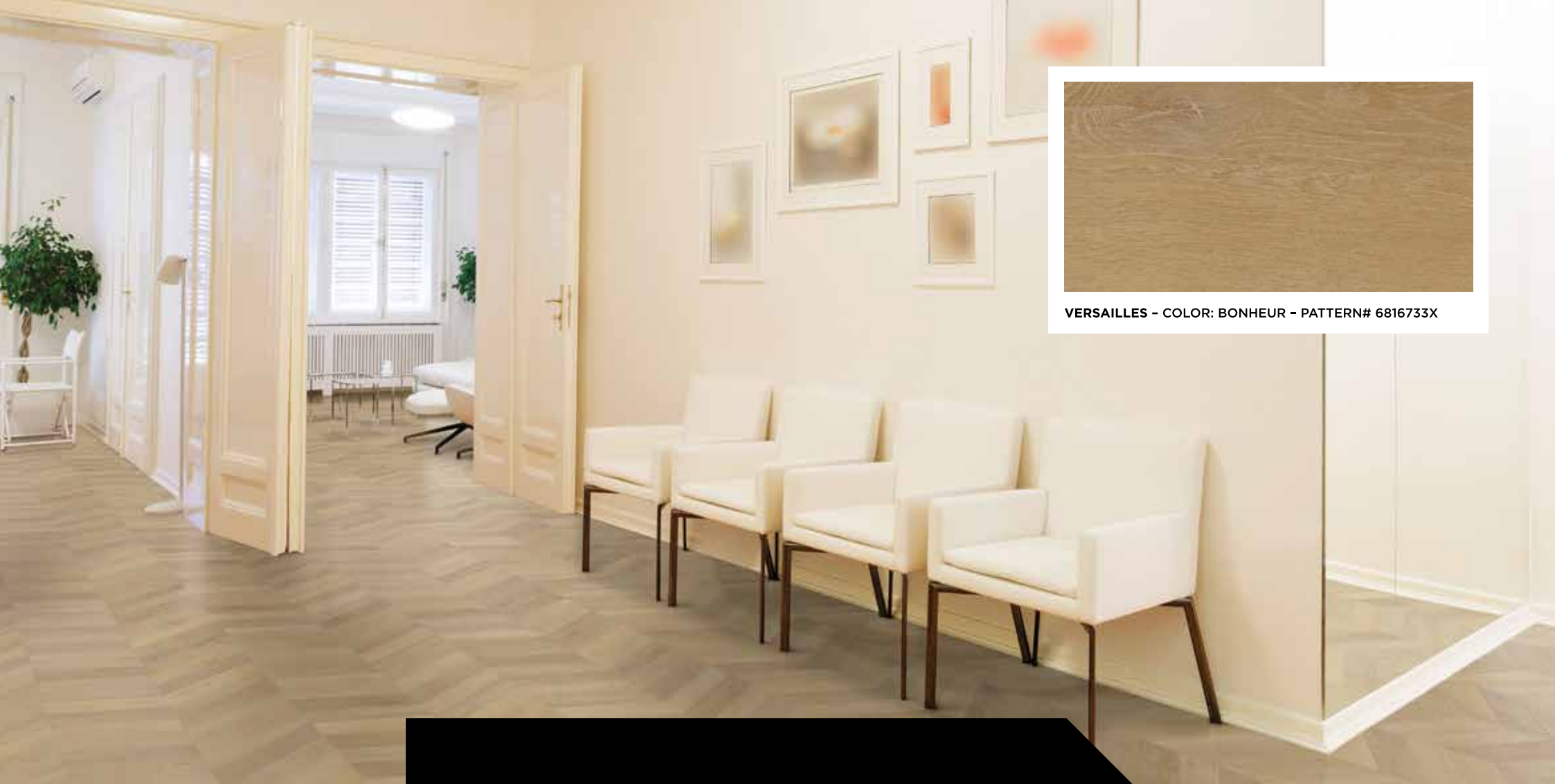


VERSAILLES

HIGH-STYLE, GRAND CHEVRON IMPACT



VERSAILLES - COLOR: RIVIÈRE - PATTERN# 6816731X



VERSAILLES - COLOR: BONHEUR - PATTERN# 6816733X

ASPECTA™ CONTOURS **VERSAILLES**

Versailles, a pre-assembled chevron plank, produces a smaller-scale chevron pattern when installed. The end result is a high-style, European-influenced designer look that can be used in a wide range of commercial settings. Its old-world, grand impact appears wherever you put it—retail, restaurants, hospitality. The Versailles chevron design is the new gold standard in flooring.





VERSAILLES - COLOR: BLÉ - PATTERN# 6816724X



VERSAILLES - COLOR: ALPIN - PATTERN# 6816701X

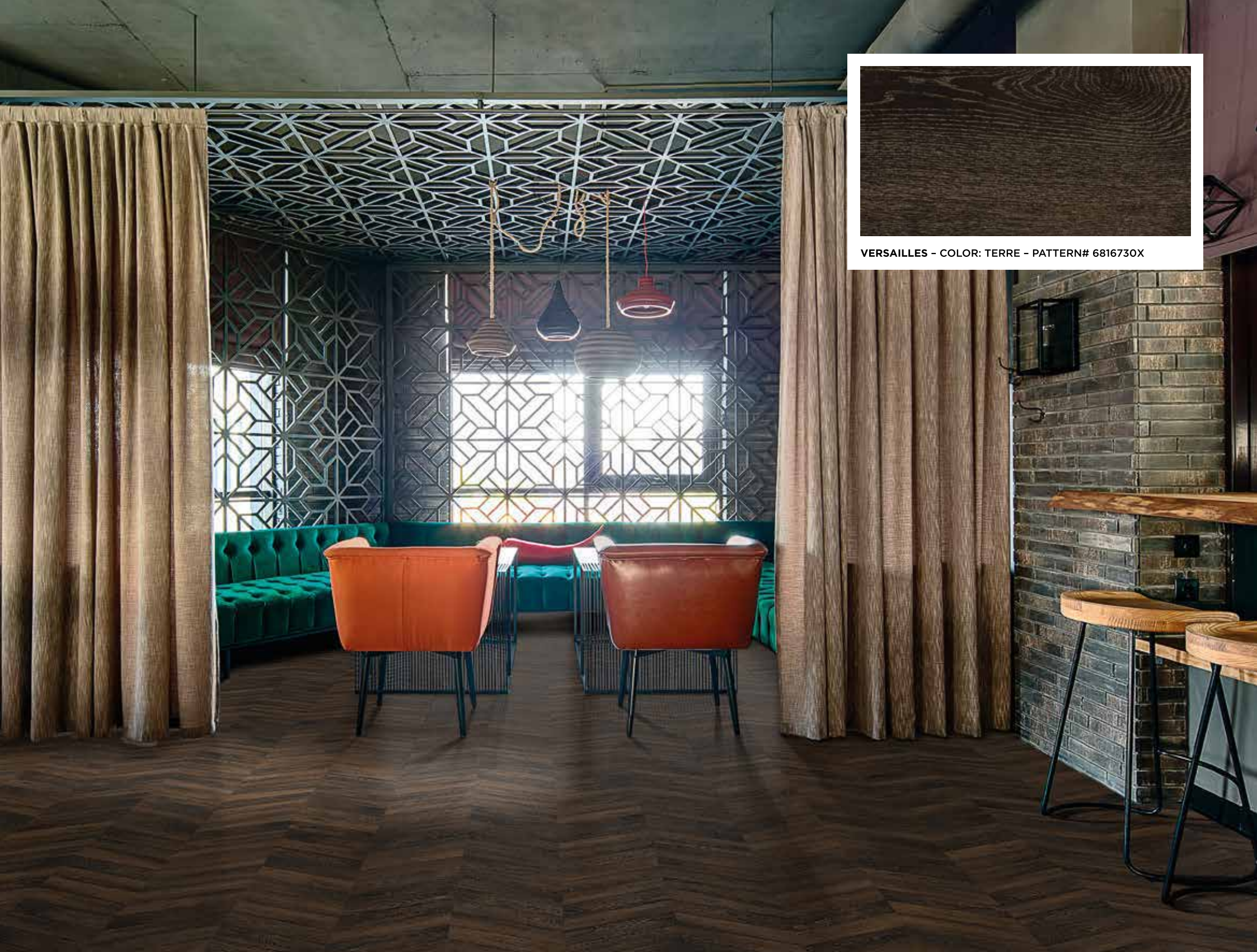




VERSAILLES - COLOR: NATUREL - PATTERN# 6816739X



VERSAILLES - COLOR: AMBRE - PATTERN# 6816722X



VERSAILLES - COLOR: TERRE - PATTERN# 6816730X



VERSAILLES - COLOR: SOLEIL - PATTERN# 6816726X

OVERVIEW VERSAILLES

To create the Versailles effect, ASPECTA™ assembles small chevron-shaped pieces of LVT – each with a micro-bevel – onto a rigid ISOCORE panel, which is then cut into a chevron and milled with our DropLock 100 locking profile. Point-to-point A&B planks line up the small chevrons within each Versailles plank.



VERSAILLES - COLOR: NATUREL - PATTERN# 6816739X



VERSAILLES - COLOR: ALPIN - PATTERN# 6816701X



VERSAILLES - COLOR: BONHEUR - PATTERN# 6816733X



VERSAILLES - COLOR: AMBRE - PATTERN# 6816722X



VERSAILLES - COLOR: SOLEIL - PATTERN# 6816726X



VERSAILLES - COLOR: RIVIÈRE - PATTERN# 6816731X

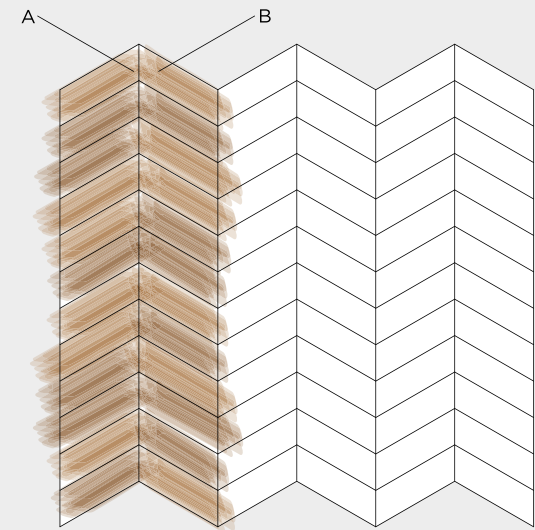


VERSAILLES - COLOR: BLÉ - PATTERN# 6816724X



VERSAILLES - COLOR: TERRE - PATTERN# 6816730X

VERSAILLES (CHEVRON PLANK GRANDE)



TECHNICAL DATA SHEETS - US

Find more information about ASPECTA™ CONTOURS and our other collections on aspectaflooring.com.

PHYSICAL PROPERTIES & PACKAGING (FLOATING MULTILAYER MODULAR FLOORING - 8.0 MM / 0.55 MM)

Collection	Chantilly	Versailles
Use	Commercial	Commercial
Size (inches)	8.66 x 43.31 in.	12.01 x 55.43 in.
Size (mm)	220 x 1100 mm	305 x 1407.8 mm
Thickness - Wear Layer	0.55 mm (22 mil)	0.55 mm (22 mil)
Thickness - Overall	8.0 mm (0.315 in.)	8.0 mm (0.315 in.)
Top Layer	2.0 mm (0.079 in.) LVT	2.0 mm (0.079 in.) LVT
Core	5.0 mm (0.197 in.) ISOCORE	5.0 mm (0.197 in.) ISOCORE
Pad	1.0 mm (0.039 in.) HDPE	1.0 mm (0.039 in.) HDPE
Profile	Micro-bevel	Micro-bevel
Finish	Duraspect™	Duraspect™
Embossing	In-Register	In-Register
Coverage - Carton	8 Pieces (20.84 Sq.ft. / 1.94 Sq.m.)	4 Pieces (18.49 Sq.ft. / 1.72 Sq.m.)
Coverage - Pallet	52 Cartons (1,083.6 Sq.ft. / 100.7 Sq.m.)	45 Cartons (831.9 Sq.ft. / 77.3 Sq.m.)
Coverage - Container	20 Pallets (21,672 Sq.ft. / 2,013 Sq.m.)	18 Pallets (14,975 Sq.ft. / 1,391 Sq.m.)
ASPECTA™ Contours Limited Commercial Warranty ¹	Material: 20 Years (100%) Labor: 10 Years (Pro-Rated)	Material: 20 Years (100%) Labor: 10 Years (Pro-Rated)

NORTH AMERICAN STANDARDS - MANUFACTURING & USAGE (ASTM F3261)

Standard	Description	Requirements	Results
ASTM F3261	Physical Characteristics / Tolerances	Refer to Standard	Passes Requirements ²
ASTM F1914	Residual Indentation	Average: ≤ 0.007 in. (0.18 mm)	Passes Requirements
ASTM F1914	Surface Integrity	No puncture through wear layer / décor layer	Passes Requirements
ISO 23999	Dimensional Stability	≤ 0.2% / lineal ft. (305 mm)	Passes Requirements
ISO 23999	Curling	≤ 0.080 in. (2.0 mm)	Passes Requirements
ASTM F925	Chemical Resistance	No more than "Slight Change"	Passes Requirements
ASTM F1514 / ASTM F1515	Resistance to Heat / Resistance to Light	Average ΔE < 8.0	Passes Requirements
ASTM F970	Static Load Limit	≤ 0.005 in. (0.13 mm), 250 psi	Passes Requirements (≥ 500 psi)

Notes

1) ASPECTA™ CONTOURS Limited Commercial Warranty: Please see full terms and conditions of our warranties at www.aspectaflooring.com.

2) ASTM F3261 - Physical Characteristics / Tolerances: includes Size, Squareness, Thickness, Wear Layer Thickness (Commercial Class.), Flatness, Openings, and Ledging.

TECHNICAL DATA SHEETS - US

Find more information about ASPECTA™ CONTOURS and our other collections on [aspecta flooring.com](https://www.aspecta flooring.com).

NORTH AMERICAN STANDARDS - SAFETY & PERFORMANCE			
Standard	Description	Requirements	Results
ASTM E648	Critical Radiant Flux (Radiant Panel)	Class I: ≥ 0.45 W/Sq.cm.	Passes Requirements ³
ASTM E662	Smoke Density	Flaming & Non-Flaming ≤ 450	Passes Requirements ⁴
CDPH Standard Method v1.2	VOCs/TVOCs, Formaldehyde	Refer to Standard	Passes Requirements
ASTM F963	Heavy Metals	Refer to Standard (Table I)	Passes Requirements
CPSC-CH-C1001-09.3	Phthalates	Per CPSIA ⁵ : $\leq 0.1\%$ per Substance	Passes Requirements
ASTM D2047	Coefficient of Friction / Slip Resistance	N/A (No Official Requirements)	≥ 0.6 (Dry)
ANSI ESD STM97.2	Body Voltage	N/A (No Official Requirements)	Average (Abs): 1.3kV

NORTH AMERICAN STANDARDS - SOUND				
Assembly	ASTM E90	ASTM E492	ASTM E2179	Results (Remarks)
6" Concrete Slab	STC 50	IIC 54	Δ IIC 25	Tested assemblies pass International Building Code (IBC)
6" Concrete Slab + Drop-Ceiling	STC 61	IIC 67	Not Applicable	Requirements of STC ≥ 50 and IIC ≥ 50 for multi-story dwellings

Notes

3) ASTM E648 - Critical Radiant Flux (Radiant Panel): Passes Requirements for Class I per International Building Code (IBC) 2018 & NFPA 101 Life Safety Code.

4) ASTM E662 - Smoke Density: 450 is the limit established by many state, county, and/or local building and/or fire codes in the United States, but is not set as a limit for (resilient) flooring products nationwide. Thus, Smoke Density requirements for flooring products may vary from jurisdiction to jurisdiction.

5) CPSC-CH-C1001-09.3 - Phthalates: CPSIA = Consumer Product Safety Improvement Act.






TECHNICAL DATA SHEETS - EU

Find more information about ASPECTA™ CONTOURS and our other collections on aspectaflooring.com.

PHYSICAL PROPERTIES & PACKAGING (FLOATING MULTILAYER MODULAR FLOORING - 8.0 MM / 0.55 MM)

Collection	Chantilly	Versailles
Use ¹	Commercial	Commercial
Size (inches)	8,66 x 43,31 in.	12,01 x 55,43 in.
Size (mm)	220 x 1100 mm	305 x 1407,8 mm
Thickness - Wear Layer	0,55 mm (22 mil)	0,55 mm (22 mil)
Thickness - Overall	8,0 mm (0,315 in.)	8,0 mm (0,315 in.)
Top Layer	2,0 mm (0,079 in.) LVT	2,0 mm (0,079 in.) LVT
Core	5,0 mm (0,197 in.) ISOCORE	5,0 mm (0,197 in.) ISOCORE
Pad	1,0 mm (0,039 in.) HDPE	1,0 mm (0,039 in.) HDPE
Profile	Micro-bevel	Micro-bevel
Finish	Duraspect™	Duraspect™
Embossing	In-Register	In-Register
Coverage - Carton	8 Pieces (20,84 Sq.ft. / 1,94 m ²)	4 Pieces (18,49 Sq.ft. / 1,72 m ²)
Coverage - Pallet	52 Cartons (1083,6 Sq.ft. / 100,67 m ²)	45 Cartons (831,9 Sq.ft. / 77,29 m ²)
Coverage - Container	20 Pallets (21.672 Sq.ft. / 2013,44 m ²)	18 Pallets (14.975 Sq.ft. / 1391,19 m ²)
ASPECTA™ Contours Limited Commercial Warranty ²	Material: 20 Years (100%) Labor: 10 Years (Pro-Rated)	Material: 20 Years (100%) Labor: 10 Years (Pro-Rated)

EUROPEAN / INTERNATIONAL STANDARDS - CE CERTIFICATION / TESTING

Description	Standard	Symbol	Requirements	Results
CE Certification	EN 14041		Refer to Standards Below	Refer to Results Below
Reaction to Fire (and Smoke Production)	EN 13501-1 EN ISO 9239-1 EN ISO 11925-2		B_{fl} - s1 Classification Critical Flux: ≥8.0kW/m ² Flame Spread: ≤150mm within 20s Smoke value as % x min: ≤750	Passes Requirements
Content of PCP (Pentachlorophenol)	EN 14041		<5ppm	Passes Requirements
Formaldehyde Emission	EN 717-1		Class E1: Release ≤0.124mg/m ³	Passes Requirements
Slip Resistance (Dry)	EN 13893		Class DS: Coefficient of Friction ≥ 0.30	Surpasses Requirements






Notes

1) Use: Refer to Recommended Use PDF for Recommended Commercial Areas

2) ASPECTA™ CONTOURS Limited Commercial Warranty: Please see full terms and conditions of our warranties at www.aspectaflooring.com.

TECHNICAL DATA SHEETS - EU

Find more information about ASPECTA™ CONTOURS and our other collections on [aspecta flooring.com](https://www.aspecta flooring.com).

EUROPEAN / INTERNATIONAL STANDARDS - AUXILIARY PERFORMANCE & SAFETY				
Description	Standard	Symbol	Requirements	Results
Slip Resistance (Wet)	DIN 51130	N/A	Grade R10: $\geq 10^\circ$ and $< 19^\circ$	Passes / Surpasses
Slip Resistance (Australia / New Zealand)	AS 4586	N/A	Wet Pendulum (Slider 96) P3: 35-44 SRV Oil-Wet Inclining Platform Grade R10: $\geq 10^\circ$ and $< 19^\circ$	Passes / Surpasses Requirements
Thermal Resistance Thermal Conductivity	EN 12664		N/A	0.074 (m ² .K/W) 0.108 (W/m.k)
Static Electrical Propensity	EN 1815, Method A		≤ 2.0 kV	Passes Requirements
Colour Fastness to Light	ISO 105-B02, Method 3		\geq Grade 6	Passes Requirements
Impact Sound Insulation ³	EN ISO 10140-3 ISO 717-2 EN ISO 140-8		N/A	$\Delta L_w = 18$ dB
A-weighted walking sound pressure level	EN 16205:2013		N/A	$L_{n,walk,A} = 85$ dB(A)
Product-Content Safety	REACH SVHC 201	N/A	Refer to Standard	Passes Requirements
Heavy Metals	EN71-3	N/A	Refer to Standard	Not detected

STANDARDS - SUSTAINABILITY	
Standard(s)	Description
FloorScore® SCS-FS-03808	This product is FloorScore® certified and has thus been found to comply with the volatile organic compound emissions criteria of the California Section 01350 standard.

Notes

3) Impact Sound Insulation (EN ISO 10140-3, ISO 717-2, EN ISO 140-8): ΔL_w = Weighted Reduction of Impact Sound Pressure Level

ASPECTA™ - THE TRANSPARENCY LEADER

ASPECTA™ and its commitment to transparency are a force of positive disruption in the global LVT-flooring market. There are no communication barriers between you and us. We openly declare product ingredients. We tell you where our products are made. We provide policies and metrics on factory worker diversity, equity, and benefits. We measure the products' impact on the environment over its life cycle and communicate openly about it. We voluntarily provide this information with labels attached to our products, on the ASPECTA™ website and in sustainability databases. We encourage others to participate in the conversation. We are the transparency leader.

Just.

JUST Label

ASPECTA™ is the first company in the world to obtain a JUST label, a voluntary transparency tool, for an Asian factory. JUST provides assurance that we are paying attention to what matters most: social factors such as diversity, equity, and safety. Created by the International Living Future Institute (ILFI), JUST is the beginning of a new era in transparency, and ASPECTA™ is leading the way.



Indoor Air Certification

INDOOR AIR CERTIFICATION DATA SHEETS - EU

ASPECTA™ fulfilled the A+C indoor air quality criteria by world market leader Eurofins. The same organization also awarded ASPECTA™ the best-in-class low emissions certificate: Indoor Air Comfort GOLD. Information about ASPECTA™ CONTOURS and our other collections on aspecta flooring.com.

Declare.

Declare Label

We declare each and every ingredient in the ASPECTA™ ONE, ASPECTA™ FIVE and ASPECTA™ TEN product lines. Declare Labels, created by the International Living Future Institute (ILFI) are clear and informative „nutrition labels“ for building products. As a leader in global transparency, ASPECTA™ is the first to translate these labels into six European languages with a seventh, Mandarin, in the works.

EUROPEAN / INTERNATIONAL STANDARDS - MANUFACTURING & USAGE (EN 16511)

Description	Standard	Symbol	Requirements	Results
Classification (Level of Use)	EN 16511 EN ISO 10874		Commercial - Very Heavy (Class 34) Refer to Standards Below	Passes Requirements (Refer to Results Below)
HPD (Health Product Declaration)	ASPECTA™ ONE, ASPECTA™ FIVE and ASPECTA™ TEN		ISO9001 Quality management system	Surpasses Requirements
Scratch Resistance [Class]	EN 16094, Method B	N/A	≤MSR-B2	Passes
Castor Chair Resistance	EN 425		After 25,000 cycles: No Disturbance to the Surface; No Delamination, Cracks, or Disruptions	Passes Requirements
Effect of Furniture Leg	EN 424		No Visible Damage	Passes Requirements
REACH (EC 1907/2006) aims to improve the protection of human health and the environment through the better identification of the intrinsic properties of chemical substances. This is done by the four processes of REACH, namely the registration, evaluation, authorization and restriction of chemicals. All our products are REACH compliant.	EN 1504-1 EN 1504-2 (Group 1 - Only 10 Minutes) EN 1504-3 (Group 2)		ISO14001 Environmental management system	Surpasses Requirements
Locking Strength	ISO 24334		Long Side ≥ 2.0kN/m Short Side ≥ 3.5kN/m	Surpasses Requirements
Dimensional Stability Due to Variation of Temperature	EN ISO 23999		≤0.25%	Surpasses Requirements



ASPECTA[™]

CONTOURS

Featuring  **ISOCORE** Technology[™]

