



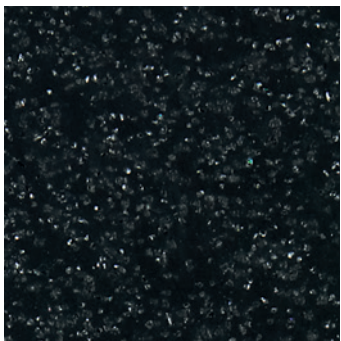
Designed for possibilities.
Made for people.



Altro Stronghold™ 30 product datasheet

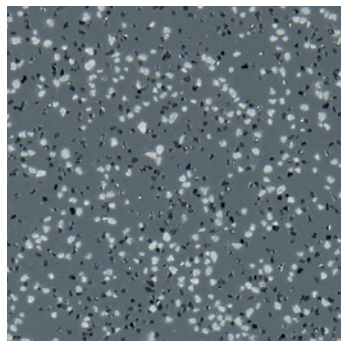
Aggressive safety flooring designed to minimize risk in wet and greasy areas





Abyss

K3001



Dolphin

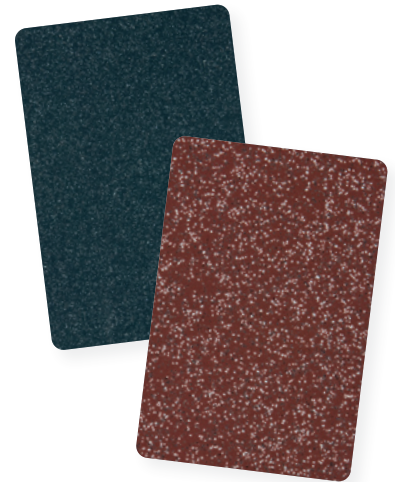
K3010



Type + class		ASTM F1303	Type II, Grade 1, Class A, safety flooring
Thickness and wear layer		3.0mm .12", homogeneous construction	
Roll dimensions		6'7" x 49' 2m x 15m	
Weight		7.19 lbs./yd ² 3.9 kg/m ² 275 lbs. per roll	
Warranty		12 years	
Cleaning technology		Altro Easyclean	
Static coefficient of friction		ASTM D2047	.92 dry, .88 wet
Dynamic coefficient of friction		ANSI/NFSI B101.3	.74 wet DCOF
Ramp test		DIN 51130	R12
TRRL pendulum test		BS 7976 ASTM E303	55+
Static load limit		ASTM F970	2000 psi
Indentation		EN 433	≤ 0.10mm
Wear (abrasion) resistance		EN 660	≤ 10% 50,000 cycles
Castor chair abrasion		EN 425	Pass
Flexibility		ASTM F137	Pass
Light fastness		EN 20105-B02	≥ 6
Sound insulation		ISO 140-8	10dB
Electrical behaviors		EN 1815	≤ 2kV Antistatic
Minimum operating temperature		-22°F (-30°C)	
Fire and smoke performance		CAN/ULC - S102.2 ASTM E648 ASTM E662	Tested Class I < 450
Plumbing code standards		ANSI/ICPA SS-1 2001 IAPMO PS 106-2015e1	Certified
Mold resistance		ASTM D3273	Excellent - Score of 10
Fungi resistance		ASTM G21	Passes rating 0* *achieves zero growth after 21 days
Chemical resistance		ASTM F925	Tested
VOC emissions		CA 01350 FloorScore	Pass Certified
Bio-based content		Manufactured with rapidly renewable bio-based content.	
Ortho-phthalate content		Ortho-phthalate-free	
Recycled content		This product contains 10% post-consumer recycled content.	
Composition	Silicon carbide, aluminum trioxide and colored quartz aggregate throughout thickness of PVC.		
Backing	Non-woven polyester/cellulose glass fiber reinforcement scrim.		
Installation and maintenance	Altro flooring must be installed by a professional flooring installer that has attended an Altro training clinic. Installation procedures available at altro.com , training clinic information at altro.com . Proper care of Altro flooring is critical. Please consult our cleaning procedures available at altro.com . Failure to install, heat weld, and/or maintain correctly could void the warranty.		

LEED facts		
LEED v4		This product may help contribute to the following credits
Altro Stronghold 30		6
	Materials and resources Contains recycled content	1
	Materials and resources Renewable bio-based content	1
	Materials and resources - EPD Environmental product declaration Type III product specific	1
	Materials and resources - HPD Health product declaration	1
	Environmental quality Low emitting materials, flooring	1
	Environmental quality Low emitting materials, adhesives	1

Discover more of our sustainability story and credentials at altro.com



Order samples 24 hours a day at altro.com and materialbank.com

